

Public Accessibility Documentation

PWS Name: Varner Creek Utility District

PWSID: 200070

Purpose of this worksheet: For systems to provide documentation to states on how public accessibility requirements of the LCRR were met. *All information on this page is required.*

Remember that the LCRR requires systems to use a location identifier for service lines that are lead and galvanized requiring replacement. Water systems may, but are not required to, include a locational identifier for lead status unknown service lines or list the exact address of each service line (40 CFR §141.84(a)(8)(i)).

1. Select the location identifiers that you use for your service line inventory. Check all that apply.*

Address	Yes	GPS Coordinates	No
Street	Yes	Other	Yes

If "Other" is Yes, please describe below:

Building numbers.

2. Does **every service line** have a location identifier? If "No", explain below.*

Yes

3. How is the inventory made publicly accessible? Check all that apply. Remember that if your system serves > 50,000 people, you **must** provide the inventory online.*

Interactive online map	No	Printed tabular data	Yes
Static online map	No	Information on water utility mailings or newsletter	No
Online spreadsheet	No	Hard copy information available in water system office	Yes
Printed service line map	No	Other	No

If "Other" is Yes, please describe below:



Service Line Inventory Form for Public Water Systems

What is the purpose of this template?



This template is required for community and non-transient non-community public water systems to comply with the service line inventory requirements of the January 15, 2021, Lead and Copper Rule Revisions (LCRR). This template provides fillable forms and tables for public water systems (systems) to document their methods, organize their inventory, submit the initial inventory and inventory updates electronically to the TCEQ, and document how they are making the inventory publicly available. Refer to the Lead and Copper Rule Revisions rule language in 40 CFR § 141 Subpart I and the EPA's Guidance for Developing and Maintaining a Service Line Inventory for minimum LCRR requirements and recommendations.

For questions, please contact LCRR@tceq.texas.gov or call (512) 239-4691. The financial, managerial, and technical (FMT) assistance program can provide additional assistance and can be reached (512) 239-4691 or FMT@tceq.texas.gov.

Submit the completed lead service line inventory electronically. For file sizes larger than 25 megabytes (MB), the TCEQ File Transfer Protocol Secure (FTPS) site is available at <https://ftps.tceq.texas.gov/index.php>.


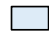

How is the template organized?

The **worksheets** in this template are color coded:

-  Yellow worksheets are instructions and background.
-  Dark blue worksheets are templates for systems.

See the table below for a description of each worksheet.

The **cells** in this template are also color coded:

-  Gray cells are background or instructions.
-  Light blue cells are fillable cells for systems.
-  Aqua cells are required.

^x Required cells are further denoted using a superscript ^x.

^{*} Conditionally required are denoted using a superscript ^{*}.

Template Organization

Worksheet Type	Worksheet Name	Description
Background	Template Instructions	Contains detailed instructions for systems.
	Classifying SLs	Summarizes requirements for classifying the entire service line (SL) when ownership is split (<i>i.e.</i> , when the system owns a portion and the customer owns a portion).
Templates for Systems	PWS Information	For systems to document basic system information.
	Inventory Methods	For systems to document the methods and resources they used to develop and update the inventory.
	Inventory Summary	For systems to provide a summary of their service line inventory, including information on ownership, inventory format, and the number of service lines for each of the four required materials classifications. Systems can enter the totals into this worksheet or automatically generate totals based on information in the Detailed Inventory worksheet.
	Detailed Inventory	For system to track materials for each service line in their distribution system. Each row equals one service line connecting the water main to the customer's plumbing. Separate columns track location information, the system-owned portion, the customer-owned portion, other possible sources of lead, information for assigning a tap sample tiering classification, and information for lead service line replacement (LSLR).
	Public Accessibility	For systems to provide documentation to TCEQ on how they met the public accessibility requirements of the LCRR.
	Certification	For systems to provide certification to TCEQ on the completion of their service line inventory.

System Template Instructions

Purpose of this worksheet: To provide detailed instructions for each worksheet for systems.

Getting Started

1. Save a copy of this workbook to your hard drive or network drive. Consider adding the system PWS ID or other system identifier to the file name (e.g., Inventory Template_TX00000000) and indicating in the file name if this is the "initial" inventory or "update1", "update2", etc.
2. Complete the **PWS Information, Inventory Methods, Inventory Summary, Public Accessibility Documentation, and Certification** worksheets by following the instructions below.
3. Use the **Detailed Inventory** worksheet in this workbook to organize information on service line material, follow the instructions below.
4. Certify completion of the lead service line inventory by using the **Certification** worksheet and following the instructions below.
5. When all relevant worksheets have been completed, submit this file electronically to the TCEQ.

PWS Information Worksheet

Purpose: *Required worksheet for systems to document basic system information.*

Directions: Include information about the system, contact information, and the individual who prepared the inventory by completing the light blue cells. For the question regarding the public water system (PWS) type, select the appropriate type from the drop-down menu; select CWS for community water system or NTNC for non-transient non community water system. For the question "if a CWS, do multi-family residence comprise at least 20% of the structures you serve", select from the dropdown list the appropriate response.

- When entered, the PWS name and PWS ID will auto-populate into all other worksheets.
- System type and multi-family residence info provided will be utilized in the **Detailed Inventory** for the Sample Site Selection Tiering (column Y).

Inventory Methods Worksheet

Purpose: Required worksheet for systems to document the methods and resources they used to develop and update their inventory.

Directions:

The information for PWS name and PWS ID in rows 3 and 4 will autofill from information provided in the **PWS Information** worksheet.

Part 1: Historical Records Review. Describe the records reviewed for the inventory for each of the five types of records that must be reviewed under the EPA LCRR. Document other records reviewed in section 5. Refer to the examples provided in Column B and EPA's Guidance for Developing and Maintaining a Service Line Inventory for additional information. For each historical record type, select "Yes" or "No" to indicate if the record type was reviewed as required by 40 § CFR 141.84(a)(3).

Part 2: Identifying Service Line Material During Normal Operation.

- Question 1: Check each box that indicates during which normal operating activities the system collects service line material information. If the "other" method option is selected, explain in the space below the question.
- Question 2: Use the dropdown menu to indicate if standard operating procedures were developed or revised for identifying service line materials. If "yes" is selected, include a description in the space below the question.

Part 3: Service Line Investigations.

- Question 1: Check each box that indicates the investigative methods used to prepare your inventory. If "other" is selected, explain in the space below the question.
- Question 2: If the system used "Predictive Modeling", provide a written explanation of the method and its inputs.

Inventory Summary Worksheet

Purpose: *Required worksheet for systems to provide a summary of their service line inventory, including information on ownership, format, and the number of service lines for each of the four required materials classifications.*

Directions:

The information for PWS name and PWS ID in rows 3 and 4 will autofill from information provided in the PWS Information worksheet.

Part 1: General Information.

- Question 1: Use the dropdown menu to indicate if this is an initial inventory or an inventory update.
- Question 2a: Use the dropdown menu to indicate who owns the service line. If "Other", describe in the space below the question.
 - For systems that indicate that the entire service line is owned by the PWS from the dropdown menu, the Detailed Inventory will be updated to not require information on the customer-owned portion of the service line.
- Question 2b: Use the dropdown list to indicate whether there is documentation that defines service line ownership in your system. In the text box, include reference to any documentation that defines service line ownership in the system, such as a local ordinance, and if applicable, where ownership is split (e.g., property line, curb stop).
- Question 3a: Describe when the lead service lines were generally installed in your system.
- Question 3b: Describe when the lead service lines were banned in your system including a reference to the state or local ordinance that banned their use.
- Question 4: Use the dropdown menu to indicate if you have any lead connectors in your system. For example, a lead gooseneck or pigtail that connects the service line to the water main. If you are unsure, select "Don't Know."

Part 2: Inventory Summary Table.

This summary table is for classifying and reporting material for the entire service line connecting the water main to the building inlet. When using the **Detailed Inventory** worksheet, the classifications generated in the column "Entire Service Line Material Classification" (Column Q) will be used to calculate the total number of service lines for each of the four material classifications in Table 1 of the **Inventory Summary** worksheet. Note that the calculation starts on row 13 of the **Detailed Inventory** worksheet. Rows 13 through 20 are provided as examples; in order for the Inventory Summary counts to accurately reflect the system inventory, the examples will need to be deleted. Refer to definitions provided as part of the summary table and the **Classifying SLs** worksheet for additional guidance on assigning a materials classification to the entire service line when ownership is split between the system and customer.

Note that:

- Systems must track the system-owned and customer-owned portions separately in their inventory unless the PWS maintains ownership over the entire service line.
- A lead-lined galvanized service line is consistent with the definition of a lead service line under the LCRR ("a portion of pipe that is made of lead, which connects the water main to the building inlet") (40 CFR §141.2) and must therefore be classified in the inventory as a lead service line. Do not, however, count non-lead service lines with only a lead gooseneck or pigtail as lead service lines.

Detailed Summary Worksheet

Purpose: To provide a format for systems can use to track materials for each service line in their distribution system.

General Instructions: Each row in this worksheet represents one service line connecting the water main to the customer's plumbing. The worksheet is organized into seven sections:

- Location Information
- System-Owned Portion
- Customer-Owned Portion
- Entire Service Line Material Classification
- Other Potential Sources of Lead
- Additional Information to Assign Tap Monitoring Tiering
- Lead Service Line Replacement (LSLR)

Columns with aqua shading are required by the EPA LCRR. Additionally, all required or conditionally required fields are denoted by superscript indicators. As explained in more detail below, entries for each field can either be selected from a dropdown menu or will require manual entry. Nine examples with a range of available data are provided for reference.

Location Information

- **Column B - Unique Service Line ID:** Assign a unique ID to each row that represents one service line. You can number each row starting with the number 1 and ending with the number that equals the number of service lines included in your inventory.
- **Column C - Street Number:** This field is required. Enter the actual street location address (street number) of the service line. Do not enter the billing address that may be a location other than the service address.
- **Column D - Street Name:** This field is required. Enter the actual street location address (street name) of the service line. Do not enter the billing address that may be a location other than the service address.
- **Column E - City:** This field is required. Enter the City of the street location address of the service line.
- **Column F - Zip Code:** This field is required. Enter the Zip Code of the street location address of the service line.
- **Column G - Other Location Identifier:** This field is conditionally required. Include a non-address location identifier (e.g., block, intersection, landmark, or water meter) for each service line.
- **Column H - GPS Coordinates - Latitude:** This field is conditionally required. If including GPS coordinates for a service line, enter in this field the latitude coordinates using decimal degrees (DD). All entries in this field should be positive values for Texas. It is recommended to include 5 decimal places.
- **Column I - GPS Coordinates - Longitude:** This field is conditionally required. If including GPS coordinates for a service line, enter in this field the longitude coordinates using decimal degrees (DD). All entries in this field should be negative values for Texas. It is recommended to include 5 decimal places.

System-Owned Portion

Complete the information in Columns J-M if either (1) the system owns the entire service line, or (2) ownership is split, where the system owns a portion, and the customer owns a portion.

- **Column J - System-Owned Portion Service Line Material Classification:** This field is required. Use the dropdown menu to select the recommended material subclassifications for the system-owned portion. If "Non-lead - Other" is selected, provide additional information in Column M - Notes.
- **Column K - If Non-Lead, was Material Ever Previously Lead?:** This field is conditionally required if the System-Owned Portion Service Line Material Classification (Column J) was marked as a Non-Lead option. Use the dropdown menu to select "Yes", "No", or "Don't know". This information is important for determining if a downstream/customer-owned galvanized service line requires replacement and will affect the entire service line classification.
- **Column L - Service Line Installation Date?:** This field is conditionally required if the System-Owned Portion Service Line Material Classification (Column J) was marked as a Non-Lead option. Use the dropdown menu to enter the estimated date range when the service line was installed or replaced.
- **Column M - Notes:** Use this column to provide any additional information, such as additional details about the basis of material classification, additional information on the field verification method, or documentation of previous materials classification.

Customer-Owned Portion

- **Column N - Customer-Owned Portion Service Line Material Classification:** This field is required. Use the dropdown menu to select the recommended material subclassifications for the system-owned portion. If you select "Non-lead - Other", provide additional information in Column P - Notes.
- **Column O- Service Line Installation Date?:** This field is conditionally required. Use the dropdown menu to enter the estimated date range when the service line was installed or replaced.
- **Column P - Notes:** Use this column to provide any additional information, such as additional details about the basis of material classification, additional information on the field verification method, or documentation of previous materials classification.

Entire Service Line Material Classification

- **Column Q - Entire Service Line Material Classification:** This field is required. This field will be auto-generated for each lead service line row depending on entries added for the system-owned portion and customer-owned portion section. Refer to **Classifying SLs** worksheet for guidance on how the material for the entire service line is classified. The **Inventory Summary** worksheet will automatically calculate the total service lines in each of the four categories based on the entries in this column.

Other Potential Sources of Lead

- **Column R - Is there a Lead Connector:** This field is conditionally required. Use the dropdown menu to indicate if there is a lead connector. For example, a lead gooseneck or pigtail used to connect the water main to the service line.
- **Column S - Is there a Lead Solder in the Service Line:** This field is conditionally required. Use the dropdown menu to indicate if there is lead solder in the service line.
- **Column T - Describe Other Fittings and Equipment Connected to the Service Line that Contain Lead:** Include any other lead-containing fittings and equipment that are connected to the service line, such as backflow preventers and/or meters.

Additional Information to Assign Tap Monitoring Tiering

Columns U through Y are for documenting additional information that is helpful in assigning a tap sample tiering classification as follows:

- **Column U - Building Type Connected to the Service Line:** Use the dropdown menu to indicate if the building type connected to the service line is single family, multiple family residence, building or other.
- **Column V - Point-of-Entry or Point-of-Use Treatment Present:** Use the dropdown menu to indicate if the home or building connected to the service line has a point-of-entry or point-of-use device.
- **Column W - Does the Interior Building Plumbing Contain Copper Pipes with Lead Solder Installed Before July 1, 1998:** Use the dropdown menu to indicate if lead solder pre-dates the state's lead ban.
- **Column X - Current LCR Sampling Site?:** Use the dropdown menu to indicate if you have identified this location as a sampling site for lead and copper tap sampling.
- **Column Y - Sample Site Selection Criteria (Site Tier):** This field will be auto-generated for each lead service line row depending on entries made. Systems with LSLs are required to collect samples from all LSL sites (Tier 1 and 2) unless there is an insufficient number. In those cases, the system must use Tier 3, 4, or 5 sites, in that order.

Additional Information to Assign Tap Monitoring Tiering

- **Column Z - Date of System-owned LSLR:** Indicate the date the system-owned portion of the lead service line was replaced, if applicable.
- **Column AA - Date of Customer-owned LSLR:** Indicate the date the customer-owned portion of the lead service line was replaced, if applicable.

Public Accessibility Worksheet

Purpose: Required worksheet for systems to provide documentation to TCEQ on how they met the public accessibility requirements of the LCRR.

Directions:

The information for PWS name and PWS ID in rows 3 and 4 will autofill from information provided in the **PWS Information** worksheet.

- Question 1: Check each box that indicates the location identifiers that you use for your service line inventory. If "Other" is checked, please explain in the space below the question.
- Question 2: Use the dropdown menu to indicate if every service line has a location identifier. If "no", explain in the space below the question. **Remember that the LCRR requires systems to use a location identifier for service lines that are lead and galvanized requiring replacement. Systems may, but are not required to, include a locational identifier for lead status unknown service lines or list the exact address of each service line (40 CFR §141.84(a)(8)(i)).**
- Question 3: Check each box that indicates how you are making your inventory publicly accessible. If "Other" is checked, please explain in the space below the question. **Note that the LCRR requires all systems that service more than 50,000 people to provide the inventory online (40 CFR §141.84(a)(8)(ii)).**

PWS Certification

Purpose: For systems to certify completion of the lead service line inventory.

Directions:

- Review each statement and select the checkbox for each field certifying that you understand and agree to the statement provided.
- Include the name of the PWS representative at the bottom of the worksheet.

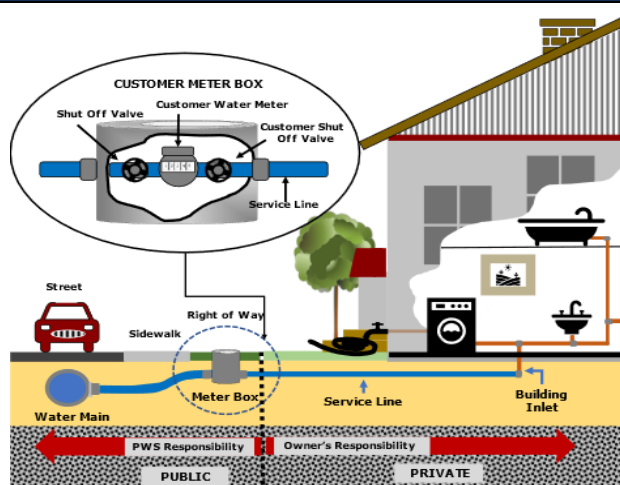
Classifying the Entire Service Line When Ownership Is Split

Purpose of this worksheet : Summarizes requirements for classifying the entire service line (SL) when ownership is split (i.e., when the system owns a portion and the customer owns a portion).

Introduction

In many cases, service line ownership is **split** meaning that the system owns a portion and the customer owns a portion of the service line. Exhibit 1 below is a diagram of a possible division in service line ownership between the water system and customer. While the LCRR requires the inventory to categorize each service line or portions of the service line where ownership is split, a single classification per service line is also needed to support various LCRR requirements, such as lead service line replacement (LSLR), tap sampling, and risk mitigation. Table 1 below indicates how to classify the material for the entire service line when ownership is split between the water system and customer. For more information refer to the Lead and Copper Rule Revisions in 40 CFR § 141 Subpart I and the EPA's Guidance for Developing and Maintaining a Service Line Inventory.

Exhibit 1. Example of Service Line Ownership Distinction between the Water System and Customer



Source: TCEQ

Table 1: Classification of Entire Service Line When Ownership is Split.

System-Owned Portion	Customer-Owned Portion	Classification for Entire Service Line
Lead	Lead	Lead
Lead	Galvanized	Lead
Lead	Non-lead	Lead
Lead	Lead Status Unknown	Lead
Non-lead	Lead	Lead
Lead Status Unknown	Lead	Lead
Galvanized	Lead	Lead
Non-lead, but system is unable to demonstrate it was not previously Lead	Galvanized	Galvanized Requiring Replacement
Lead Status Unknown	Galvanized	Galvanized Requiring Replacement
Non-lead and never previously lead	Non-lead, specifically galvanized pipe material	Non-lead
Non-lead	Non-lead, material other than galvanized	Non-lead
Lead Status Unknown	Non-lead	Lead Status Unknown
Non-lead	Lead Status Unknown	Lead Status Unknown
Lead Status Unknown	Lead Status Unknown	Lead Status Unknown

Source: Modified from Exhibit 2-3 of Guidance for Developing and Maintaining a Service Line Inventory (USEPA, 2022).

PWS Information

Purpose of this worksheet: For water systems to document basic system information. All information on this page is required.

Facility Information*

Water System Name:

Varner Creek Utility District

PWSID:	Population Served (number of people):	Number of Service Connections:	PWS Type:
200070	~3,000	1266	CWS

If a CWS, do multi-family residences comprise at least 20% of the structures you serve?

No

System Contact Person*

Name:	Title:
Keith Barker	President
Telephone:	Email:
(979) 345-6008	kebarker2@dow.com

Person Who Prepared Inventory (if different from above)*

Name:	Title/Affiliation:
Randall J. Liska, P.E.	District Engineer (Baker & Lawson, Inc.)
Telephone:	Email:
(979) 849-6681	rliska@bakerlawson.com

Inventory Methodology

PWS Name: Varner Creek Utility District
PWSID: 200070

Purpose of this worksheet: For systems to document the methods and resources they used to develop and update the inventory.

Note: Cells that have a superscript ^x are required fields.

Part 1: Historical Records Review

Type of Record	Describe the Records Reviewed for Your Inventory ^x	Indicate if record was reviewed as required by 40 § CFR 141.84(a)(3). ^x
1. Previous Materials Evaluation <i>Example: Locations of Tier 1 lead tap sampling locations that are served by a lead service line.</i>	Construction plans for the district's system.	Yes
2. Construction Records and Plumbing Codes <i>Examples: Local ordinance adopting an international plumbing code. Permits for replacing lead service lines.</i>	Construction plans for the district's system.	Yes
3. Water System Records <i>Examples: Capital improvement plans. Standard operating procedures. Engineering standards.</i>	Construction plans for the district's system.	No
4. Distribution System Inspections and Records <i>Examples: Distribution system maps. Tap cards. Service line repair/replacement records. Inspection records. Meter installation records.</i>	Construction plans for the district's system.	Yes
5. Other Records	Available District service records.	Yes

Part 2: Identifying Service Line Material During Normal Operations

1. During which normal operating activities are you collecting information on service line material? Check all that apply. **Note that under 40 § CFR 141.84(a)(5) water systems must identify and track service line materials in the inventory as they are encountered in the course of its normal operations.**

Water meter reading	No	Water main repair or replacement	Yes
Water meter repair or replacement	No	Water main repair or replacement	Yes
Service line repair or replacement	Yes	Backflow prevention device inspection	No
Other	Yes		

If "Other", please explain below:

Inspection of all meter boxes with the preparation of this form.

2. Did you develop or revise standard operating procedures to collect service line material information during normal operation? If "Yes", please explain below.

No

Part 3: Service Line Investigations

1. Identify the service line investigation methods your system used to prepare the inventory (check all that apply). If a water system chooses an investigation method not specified by the state under 40 CFR §141.84(a)(3)(iv), state approval is required. **Note that investigations are not required by the LCRR but can be used by systems to assess accuracy of historical records and gather information when service line material is unknown.**

Visual inspection at the Meter Pit	Yes	Water Quality Sampling - Sequential	No
Customer Self-Identification	No	Water Quality Sampling - Other	No
CCTV Inspection at Curb Box - External	No	Mechanical Excavation	No
CCTV Inspection at Curb Box - Internal	No	Vacuum Excavation	No
Water Quality Sampling - Targeted	Yes	Predictive Modeling	No
Water Quality Sampling - Flushed	No	Other	No

If "Other", please explain below:

2. If "Predictive Modeling", please briefly describe the model and inputs used:

Inventory Summary

PWS Name: Varner Creek Utility District
PWSID: 200070

Purpose of this worksheet: For water systems to provide a summary of the service line inventory, including information on ownership, inventory format, and the number of service lines for each of the four required materials classifications.

Note: Cells that have a superscript ^x are required fields.

Part 1. General Information

1. Is this the Initial Inventory or an Inventory Update ? ^x	<i>Initial Inventory</i>
2a. Who owns the service lines in your system? <i>If other, please explain below.</i> ^x	<i>Ownership is split</i>
2b. Is there documentation that defines service line ownership in your system, such as a local ordinance? <i>If yes, please describe below and explain where ownership is split (e.g., property line, curb stop).</i>	<i>Yes</i>
Varner Creek Utility District Amended Rate Order (Effective January 1, 2006)	
3a. Describe when lead service lines were generally installed in your system below.	
Per District Operator knowledge, District records, and visual inspection of all service leads at the meter, lead services lines were not installed in the District.	
3b. When were lead service lines banned for the system? Reference the state or local ordinance that banned the use of lead in your system.	
Texas Administrative Code Rule 290.117 Regulation of of Lead and Copper	
4. Are there lead goosenecks, pigtails or connectors in the system?	<i>No</i>

Part 2. Inventory Summary Table ¹

When using the **Detailed Inventory** worksheet, the classifications in the Column "Entire Service Line Material Classification" (Column Q) will be used to calculate the total number of service lines for each of the four material classifications below. **Remember this is the classification for the entire service line.**

Service Line Material Classification	Definition	Total Number of Service Lines (REQUIRED to be reported under the LCRR) ^x
Lead	Any portion of the service line is known to be made of lead. ²	0
Galvanized Requiring Replacement (GRR)	The service line is not made of lead, but a portion is galvanized and the system is unable to demonstrate that the galvanized line was never downstream of a lead service line.	0
Non-Lead	All portions of the service line are known NOT to be lead or GRR through an evidence-based record, method, or technique.	1,266
Lead Status Unknown	The service line material is not known to be lead or GRR. For the entire service line or a portion of it (in cases of split ownership), there is not enough evidence to support material classification.	0
TOTAL		1,266

Notes

¹ This summary table is for reporting material for the entire service line connecting the water main to the customer's plumbing. See the **Classifying SLs** worksheet for additional guidance on assigning a materials classification to the entire service line when ownership is split. Remember that systems must track the system-owned and customer-owned portions separately in their inventory.

² A lead-lined galvanized service line is consistent with the definition of an LSL under the LCRR ("a portion of pipe that is made of lead, which connects the water main to the building inlet") (40 CFR §141.2) and must therefore be classified in the inventory as an LSL. Do not, however, count non-lead service lines with a lead gooseneck or pigtail as lead service lines.

Detailed Inventory
PWS Name: Varner Creek Utility District PWSID: 200070

Purpose of this worksheet: To provide a format water systems can use to track materials for each service line in the distribution system.

General Instructions: Each row in this worksheet represents one service line connecting the water main to the customer's plumbing. The worksheet includes required and recommended elements; the columns with the aqua shading are required by the LCCR. The worksheet includes examples in rows 12 - 20 and is formatted for approximately 10,000 entries.

TCEQ-20943 (Rev. 1/25/2023)

Location Information					System-Owned Portion				Customer-Owned Portion				Other Potential Sources of Lead			Additional Information to Assign Tap Monitoring Tiering						Lead Service Line Replacement	
Unique Service Line ID	Location Identifier ^a				System-Owned Portion Service Line Material Classification ^b	If Non-Lead in Column J, Was Material Ever Previously Lead? ^c	Service Line Installation Date ^d	Notes	Customer-Owned Portion Service Line Material Classification ^e	Service Line Installation Date ^f	Notes	Entire Service Line Material Classification ^g	Is there a Lead Connector? ²	Is there Lead Solder in the Service Line? ¹	Describe Other Fittings and Equipment Connected to the Service Line that Contain Lead	Building Type Connected to Service Line	Point-of-Entry or Point-of-Use Treatment Present?	Does the Interior Building Plumbing Contain Copper Pipes with Lead Solder Installed Before July 1, 1988?	Current LCR Sampling Site?	Sample Site Selection Criteria (Site Tier)	Date of System-owned LSLR	Date of Customer-owned LSLR	
	Street Number ^a	Street Name ^a	City ^a	Zip Code ^a																			
A Unique ID is recommended for each service line.	Water systems must track addresses of all service lines in their internal inventory. For the publicly accessible version, location identifiers are required for lead and galvanized requiring replacement. If the system does not use addresses for their location identifier, other options could include a landmark, intersection, block, or other details to specify service line locations. If using GPS coordinates, utilize the GPS Coordinate - Latitude/Longitude fields and include 5 decimal places.				Dropdown list includes recommended subclassifications. If "Non-Lead Other", describe in Notes field	Select Yes, No, or Don't know. Important for determining if downstream customer-owned galvanized service line requires replacement	Dropdown list when the service line was installed or replaced	Use this field for documenting additional relevant information, including when classification changes.	Dropdown list includes recommended subclassifications. If non-lead other, describe in Notes field.	Date, year, or estimated date range when the service line was installed or replaced	Can use this field for documenting additional relevant information, including when classification changes.	Dropdown list includes four required service line classifications of Lead, Non-lead, Galvanized Requiring Replacement, or Unknown	For example, lead gooseneck or pigtail where the water main is connected to the service line	Select Yes, No, or Don't Know	For example, backflow preventer or meter containing lead	Note: This information may be helpful for identifying lead tap monitoring locations.							
198275	2299	RIVERSIDE	WEST COLUMBIA	77486	Non-Lead - Copper	No	Between 1989 and 2014		Non-Lead - Plastic	Between 1989 and 2014		Non-Lead	No	No		Single Family Residence				Tier 5			
198276	2295	RIVERSIDE	WEST COLUMBIA	77486	Non-Lead - Plastic	No	After 2014		Non-Lead - Plastic	After 2014		Non-Lead	No	No		Single Family Residence				Tier 5			
198277	2291	RIVERSIDE	WEST COLUMBIA	77486	Non-Lead - Plastic	No	After 2014		Non-Lead - Plastic	After 2014		Non-Lead	No	No		Single Family Residence				Tier 5			
198278	2287	RIVERSIDE	WEST COLUMBIA	77486	Non-Lead - Copper	No	Between 1989 and 2014		Non-Lead - Plastic	Between 1989 and 2014		Non-Lead	No	No		Single Family Residence				Tier 5			
198279	2283	RIVERSIDE	WEST COLUMBIA	77486	Non-Lead - Copper	No	Before 1989		Non-Lead - Plastic	Before 1989		Non-Lead	No	No		Single Family Residence				Tier 5			
198280	2279	RIVERSIDE	WEST COLUMBIA	77486	Non-Lead - Copper	No	Before 1989		Non-Lead - Plastic	Before 1989		Non-Lead	No	No		Single Family Residence				Tier 5			
198284	2271	RIVERSIDE	WEST COLUMBIA	77486	Non-Lead - Copper	No	Before 1989		Non-Lead - Plastic	Before 1989		Non-Lead	No	No		Single Family Residence				Tier 5			
198285	2267	RIVERSIDE	WEST COLUMBIA	77486	Non-Lead - Copper	No	Before 1989		Non-Lead - Plastic	Before 1989		Non-Lead	No	No		Single Family Residence				Tier 5			
198286	2263	RIVERSIDE	WEST COLUMBIA	77486	Non-Lead - Copper	No	Between 1989 and 2014		Non-Lead - Plastic	Between 1989 and 2014		Non-Lead	No	No		Single Family Residence				Tier 5			
198287	2261	RIVERSIDE	WEST COLUMBIA	77486	Non-Lead - Copper	No	Before 1989		Non-Lead - Plastic	Before 1989		Non-Lead	No	No		Single Family Residence				Tier 5			
198289	2	AUGUSTA	WEST COLUMBIA	77486	Non-Lead - Copper	No	Before 1989		Non-Lead - Plastic	Before 1989		Non-Lead	No	No		Single Family Residence				Tier 5			
198291	10	AUGUSTA	WEST COLUMBIA	77486	Non-Lead - Copper	No	Before 1989		Non-Lead - Plastic	Before 1989		Non-Lead	No	No		Single Family Residence				Tier 5			
198292	14	AUGUSTA	WEST COLUMBIA	77486	Non-Lead - Plastic	No	After 2014		Non-Lead - Plastic	After 2014		Non-Lead	No	No		Single Family Residence				Tier 5			
198293	13	AUGUSTA	WEST COLUMBIA	77486	Non-Lead - Copper	No	Between 1989 and 2014		Non-Lead - Plastic	Between 1989 and 2014		Non-Lead	No	No		Single Family Residence				Tier 5			
198294	9	AUGUSTA	WEST COLUMBIA	77486	Non-Lead - Copper	No	Before 1989		Non-Lead - Plastic	Before 1989		Non-Lead	No	No		Single Family Residence				Tier 5			
198295	5	AUGUSTA	WEST COLUMBIA	77486	Non-Lead - Copper	No	Before 1989		Non-Lead - Plastic	Before 1989		Non-Lead	No	No		Single Family Residence				Tier 5			
198296	1	AUGUSTA	WEST COLUMBIA	77486	Non-Lead - Copper	No	Before 1989		Non-Lead - Plastic	Before 1989		Non-Lead	No	No		Single Family Residence				Tier 5			
198298	2253	RIVERSIDE	WEST COLUMBIA	77486	Non-Lead - Copper	No	Between 1989 and 2014		Non-Lead - Plastic	Between 1989 and 2014		Non-Lead	No	No		Single Family Residence				Tier 5			
198299	2245	RIVERSIDE	WEST COLUMBIA	77486	Non-Lead - Copper	No	Between 1989 and 2014		Non-Lead - Plastic	Between 1989 and 2014		Non-Lead	No	No		Single Family Residence				Tier 5			
198301	2241	RIVERSIDE	WEST COLUMBIA	77486	Non-Lead - Copper	No	Between 1989 and 2014		Non-Lead - Plastic	Between 1989 and 2014		Non-Lead	No	No		Single Family Residence				Tier 5			
198302	2233	RIVERSIDE	WEST COLUMBIA	77486	Non-Lead - Copper	No	Between 1989 and 2014		Non-Lead - Plastic	Between 1989 and 2014		Non-Lead	No	No		Single Family Residence				Tier 5			
198303	2229	RIVERSIDE	WEST COLUMBIA	77486	Non-Lead - Copper	No	Between 1989 and 2014		Non-Lead - Plastic	Between 1989 and 2014		Non-Lead	No	No		Single Family Residence				Tier 5			
198305	2221	RIVERSIDE	WEST COLUMBIA	77486	Non-Lead - Copper	No	Before 1989		Non-Lead - Plastic	Before 1989		Non-Lead	No	No		Single Family Residence				Tier 5			
198306	2217	RIVERSIDE	WEST COLUMBIA	77486	Non-Lead - Copper	No	Between 1989 and 2014		Non-Lead - Plastic	Between 1989 and 2014		Non-Lead	No	No		Single Family Residence				Tier 5			
198307	2213	RIVERSIDE	WEST COLUMBIA	77486	Non-Lead - Copper	No	Before 1989		Non-Lead - Plastic	Before 1989		Non-Lead	No	No		Single Family Residence				Tier 5			
198309	2205	RIVERSIDE	WEST COLUMBIA	77486	Non-Lead - Copper	No	Before 1989		Non-Lead - Plastic	Before 1989		Non-Lead	No	No		Single Family Residence				Tier 5			
198311	2197	RIVERSIDE	WEST COLUMBIA	77486	Non-Lead - Copper	No	Between 1989 and 2014		Non-Lead - Plastic	Between 1989 and 2014		Non-Lead	No	No		Single Family Residence				Tier 5			
198312	2193	RIVERSIDE	WEST COLUMBIA	77486	Non-Lead - Copper	No	Between 1989 and 2014		Non-Lead - Plastic	Between 1989 and 2014		Non-Lead	No	No		Single Family Residence				Tier 5			
198314	2185	RIVERSIDE	WEST COLUMBIA	77486	Non-Lead - Copper	No	Before 1989		Non-Lead - Plastic	Before 1989		Non-Lead	No	No		Single Family Residence				Tier 5			
198315	2181	RIVERSIDE	WEST COLUMBIA	77486	Non-Lead - Copper	No	Between 1989 and 2014		Non-Lead - Plastic	Between 1989 and 2014		Non-Lead	No	No		Single Family Residence				Tier 5			
198316	2177	RIVERSIDE	WEST COLUMBIA	77486	Non-Lead - Copper	No	Between 1989 and 2014		Non-Lead - Plastic	Between 1989 and 2014		Non-Lead	No	No		Single Family Residence				Tier 5			
198318	2169	RIVERSIDE	WEST COLUMBIA	77486	Non-Lead - Copper	No	Between 1989 and 2014		Non-Lead - Plastic	Between 1989 and 2014		Non-Lead	No	No		Single Family Residence				Tier 5			
198319	2165	RIVERSIDE	WEST COLUMBIA	77486	Non-Lead - Copper	No	Between 1989 and 2014		Non-Lead - Plastic	Between 1989 and 2014		Non-Lead	No	No		Single Family Residence				Tier 5			
198321	2157	RIVERSIDE	WEST COLUMBIA	77486	Non-Lead - Copper	No	Between 1989 and 2014		Non-Lead - Plastic	Between 1989 and 2014		Non-Lead	No	No		Single Family Residence				Tier 5			
198322	2145	RIVERSIDE	WEST COLUMBIA	77486	Non-Lead - Copper	No	Between 1989 and 2014		Non-Lead - Plastic	Between 1989 and 2014		Non-Lead	No	No		Single Family Residence				Tier 5			
198325	2141	RIVERSIDE	WEST COLUMBIA	77486	Non-Lead - Copper	No	Before 1989		Non-Lead - Plastic	Before 1989		Non-Lead	No	No		Single Family Residence				Tier 5			
198326	2137	RIVERSIDE	WEST COLUMBIA	77486	Non-Lead - Copper	No	Between 1989 and 2014		Non-Lead - Plastic	Between 1989 and 2014		Non-Lead	No	No		Single Family Residence				Tier 5			
198327	2133	RIVERSIDE	WEST COLUMBIA	77486	Non-Lead - Copper	No	Before 1989		Non-Lead - Plastic	Before 1989		Non-Lead	No	No		Single Family Residence				Tier 5			
198328	2121	RIVERSIDE	WEST COLUMBIA	77486	Non-Lead - Copper	No	Between 1989 and 2014		Non-Lead - Plastic	Between 1989 and 2014		Non-Lead	No	No		Single Family Residence				Tier 5			
198331	2117	RIVERSIDE	WEST COLUMBIA	77486	Non-Lead - Copper	No	Before 1989		Non-Lead - Plastic	Before 1989		Non-Lead	No	No		Single Family Residence				Tier 5			
198332	2113	RIVERSIDE	WEST COLUMBIA	77486	Non-Lead - Copper	No	After 2014		Non-Lead - Plastic	After 2014		Non-Lead	No	No		Single Family Residence				Tier 5			
198333	2109	RIVERSIDE	WEST COLUMBIA	77486	Non-Lead - Copper	No	Before 1989		Non-Lead - Plastic	Before 1989		Non-Lead	No	No		Single Family Residence				Tier 5			
198334	2105	RIVERSIDE	WEST COLUMBIA	77486	Non-Lead - Plastic	No	After 2014		Non-Lead - Plastic	After 2014		Non-Lead	No	No		Single Family Residence				Tier 5			
198335	2101	RIVERSIDE	WEST COLUMBIA	77486	Non-Lead - Plastic	No	After 2014		Non-Lead - Plastic	After 2014		Non-Lead	No	No		Single Family Residence				Tier 5			
198337	6	SEMINOLE	WEST COLUMBIA	77486	Non-Lead - Plastic	No	After 2014		Non-Lead - Plastic	After 2014		Non-Lead	No	No		Single Family Residence				Tier 5			
198338	10	SEMINOLE	WEST COLUMBIA	77486	Non-Lead - Plastic	No	After 2014		Non-Lead - Plastic	After 2014		Non-Lead	No	No		Single Family Residence				Tier 5			
198339	14	SEMINOLE	WEST COLUMBIA	77486	Non-Lead - Copper	No	Before 1989		Non-Lead - Plastic	Before 1989		Non-Lead	No	No		Single Family Residence				Tier 5			
198340	18	SEMINOLE	WEST COLUMBIA	77486	Non-Lead - Copper	No	Before 1989		Non-Lead - Plastic	Before 1989		Non-Lead	No	No		Single Family Residence				Tier 5			
198341	17	SEMINOLE	WEST COLUMBIA	77486	Non-Lead - Copper	No	Before 1989		Non-Lead - Plastic	Before 1989		Non-Lead	No	No		Single Family Residence				Tier 5			
198343	9	SEMINOLE	WEST COLUMBIA	77486	Non-Lead - Copper	No	Before 1989		Non-Lead - Plastic	Before 1989		Non-Lead	No	No		Single Family Residence				Tier 5			

198345	1	SEMINOLE	WEST COLUMBIA	77486	Non-Lead - Copper	No	After 2014		Non-Lead - Plastic	After 2014		Non-Lead	No	No		Single Family Residence				Tier 5		
198346	2	COLONIAL	WEST COLUMBIA	77486	Non-Lead - Plastic	No	After 2014		Non-Lead - Plastic	After 2014		Non-Lead	No	No		Single Family Residence				Tier 5		
198347	6	COLONIAL	WEST COLUMBIA	77486	Non-Lead - Plastic	No	After 2014		Non-Lead - Plastic	After 2014		Non-Lead	No	No		Single Family Residence				Tier 5		
198348	10	COLONIAL	WEST COLUMBIA	77486	Non-Lead - Copper	No	Before 1989		Non-Lead - Plastic	Before 1989		Non-Lead	No	No		Single Family Residence				Tier 5		
198350	9	COLONIAL	WEST COLUMBIA	77486	Non-Lead - Copper	No	Between 1989 and 2014		Non-Lead - Plastic	Between 1989 and 2014		Non-Lead	No	No		Single Family Residence				Tier 5		
198351	5	COLONIAL	WEST COLUMBIA	77486	Non-Lead - Copper	No	Before 1989		Non-Lead - Plastic	Before 1989		Non-Lead	No	No		Single Family Residence				Tier 5		
198352	1	COLONIAL	WEST COLUMBIA	77486	Non-Lead - Copper	No	After 2014		Non-Lead - Plastic	After 2014		Non-Lead	No	No		Single Family Residence				Tier 5		
198353	2	CYPRESS POINT	WEST COLUMBIA	77486	Non-Lead - Plastic	No	After 2014		Non-Lead - Plastic	After 2014		Non-Lead	No	No		Single Family Residence				Tier 5		
198354	6	CYPRESS POINT	WEST COLUMBIA	77486	Non-Lead - Plastic	No	After 2014		Non-Lead - Plastic	After 2014		Non-Lead	No	No		Single Family Residence				Tier 5		
198356	175	FREEMAN	WEST COLUMBIA	77486	Non-Lead - Copper	No	Before 1989		Non-Lead - Plastic	Before 1989		Non-Lead	No	No		Single Family Residence				Tier 5		
198358	167	FREEMAN	WEST COLUMBIA	77486	Non-Lead - Copper	No	Before 1989		Non-Lead - Plastic	Before 1989		Non-Lead	No	No		Single Family Residence				Tier 5		
198359	159	FREEMAN	WEST COLUMBIA	77486	Non-Lead - Plastic	No	After 2014		Non-Lead - Plastic	After 2014		Non-Lead	No	No		Single Family Residence				Tier 5		
198361	155	FREEMAN	WEST COLUMBIA	77486	Non-Lead - Copper	No	Before 1989		Non-Lead - Plastic	Before 1989		Non-Lead	No	No		Single Family Residence				Tier 5		
198362	151	FREEMAN	WEST COLUMBIA	77486	Non-Lead - Copper	No	Before 1989		Non-Lead - Plastic	Before 1989		Non-Lead	No	No		Single Family Residence				Tier 5		
198363	2	INVERNESS	WEST COLUMBIA	77486	Non-Lead - Copper	No	Before 1989		Non-Lead - Plastic	Before 1989		Non-Lead	No	No		Single Family Residence				Tier 5		
198364	10	INVERNESS	WEST COLUMBIA	77486	Non-Lead - Copper	No	Before 1989		Non-Lead - Plastic	Before 1989		Non-Lead	No	No		Single Family Residence				Tier 5		
198366	18	INVERNESS	WEST COLUMBIA	77486	Non-Lead - Copper	No	Before 1989		Non-Lead - Plastic	Before 1989		Non-Lead	No	No		Single Family Residence				Tier 5		
198366	18	INVERNESS	WEST COLUMBIA	77486	Non-Lead - Copper	No	Between 1989 and 2014		Non-Lead - Plastic	Between 1989 and 2014		Non-Lead	No	No		Single Family Residence				Tier 5		
198367	17	INVERNESS	WEST COLUMBIA	77486	Non-Lead - Copper	No	Between 1989 and 2014		Non-Lead - Plastic	Between 1989 and 2014		Non-Lead	No	No		Single Family Residence				Tier 5		
198368	13	INVERNESS	WEST COLUMBIA	77486	Non-Lead - Plastic	No	After 2014		Non-Lead - Plastic	After 2014		Non-Lead	No	No		Single Family Residence				Tier 5		
198369	9	INVERNESS	WEST COLUMBIA	77486	Non-Lead - Plastic	No	After 2014		Non-Lead - Plastic	After 2014		Non-Lead	No	No		Single Family Residence				Tier 5		
198370	1	INVERNESS	WEST COLUMBIA	77486	Non-Lead - Copper	No	Before 1989		Non-Lead - Plastic	Before 1989		Non-Lead	No	No		Single Family Residence				Tier 5		
198372	10	LACOSTA	WEST COLUMBIA	77486	Non-Lead - Copper	No	Before 1989		Non-Lead - Plastic	Before 1989		Non-Lead	No	No		Single Family Residence				Tier 5		
198373	9	LACOSTA	WEST COLUMBIA	77486	Non-Lead - Copper	No	Before 1989		Non-Lead - Plastic	Before 1989		Non-Lead	No	No		Single Family Residence				Tier 5		
198374	5	LACOSTA	WEST COLUMBIA	77486	Non-Lead - Plastic	No	After 2014		Non-Lead - Plastic	After 2014		Non-Lead	No	No		Single Family Residence				Tier 5		
198375	1	LACOSTA	WEST COLUMBIA	77486	Non-Lead - Copper	No	Between 1989 and 2014		Non-Lead - Plastic	Between 1989 and 2014		Non-Lead	No	No		Single Family Residence				Tier 5		
198376	2290	RIVERSIDE	WEST COLUMBIA	77486	Non-Lead - Copper	No	Between 1989 and 2014		Non-Lead - Plastic	Between 1989 and 2014		Non-Lead	No	No		Single Family Residence				Tier 5		
198377	2286	RIVERSIDE	WEST COLUMBIA	77486	Non-Lead - Copper	No	Between 1989 and 2014		Non-Lead - Plastic	Between 1989 and 2014		Non-Lead	No	No		Single Family Residence				Tier 5		
198378	2282	RIVERSIDE	WEST COLUMBIA	77486	Non-Lead - Copper	No	Between 1989 and 2014		Non-Lead - Plastic	Between 1989 and 2014		Non-Lead	No	No		Single Family Residence				Tier 5		
198379	2276	RIVERSIDE	WEST COLUMBIA	77486	Non-Lead - Copper	No	After 2014		Non-Lead - Plastic	After 2014		Non-Lead	No	No		Single Family Residence				Tier 5		
198381	2270	RIVERSIDE	WEST COLUMBIA	77486	Non-Lead - Copper	No	Before 1989		Non-Lead - Plastic	Before 1989		Non-Lead	No	No		Single Family Residence				Tier 5		
198382	2266	RIVERSIDE	WEST COLUMBIA	77486	Non-Lead - Copper	No	Before 1989		Non-Lead - Plastic	Before 1989		Non-Lead	No	No		Single Family Residence				Tier 5		
198383	2258	RIVERSIDE	WEST COLUMBIA	77486	Non-Lead - Copper	No	Before 1989		Non-Lead - Plastic	Before 1989		Non-Lead	No	No		Single Family Residence				Tier 5		
198384	2254	RIVERSIDE	WEST COLUMBIA	77486	Non-Lead - Copper	No	Before 1989		Non-Lead - Plastic	Before 1989		Non-Lead	No	No		Single Family Residence				Tier 5		
198385	2246	RIVERSIDE	WEST COLUMBIA	77486	Non-Lead - Copper	No	Between 1989 and 2014		Non-Lead - Plastic	Between 1989 and 2014		Non-Lead	No	No		Single Family Residence				Tier 5		
198386	2242	RIVERSIDE	WEST COLUMBIA	77486	Non-Lead - Copper	No	Between 1989 and 2014		Non-Lead - Plastic	Between 1989 and 2014		Non-Lead	No	No		Single Family Residence				Tier 5		
198388	2230	RIVERSIDE	WEST COLUMBIA	77486	Non-Lead - Copper	No	Before 1989		Non-Lead - Plastic	Before 1989		Non-Lead	No	No		Single Family Residence				Tier 5		
198389	2222	RIVERSIDE	WEST COLUMBIA	77486	Non-Lead - Copper	No	Between 1989 and 2014		Non-Lead - Plastic	Between 1989 and 2014		Non-Lead	No	No		Single Family Residence				Tier 5		
198391	2218	RIVERSIDE	WEST COLUMBIA	77486	Non-Lead - Copper	No	Before 1989		Non-Lead - Plastic	Before 1989		Non-Lead	No	No		Single Family Residence				Tier 5		
198392	2210	RIVERSIDE	WEST COLUMBIA	77486	Non-Lead - Copper	No	Between 1989 and 2014		Non-Lead - Plastic	Between 1989 and 2014		Non-Lead	No	No		Single Family Residence				Tier 5		
198393	2206	RIVERSIDE	WEST COLUMBIA	77486	Non-Lead - Copper	No	Between 1989 and 2014		Non-Lead - Plastic	Between 1989 and 2014		Non-Lead	No	No		Single Family Residence				Tier 5		
198394	2200	RIVERSIDE	WEST COLUMBIA	77486	Non-Lead - Copper	No	Between 1989 and 2014		Non-Lead - Plastic	Between 1989 and 2014		Non-Lead	No	No		Single Family Residence				Tier 5		
198396	2194	RIVERSIDE	WEST COLUMBIA	77486	Non-Lead - Copper	No	Before 1989		Non-Lead - Plastic	Before 1989		Non-Lead	No	No		Single Family Residence				Tier 5		
198397	2190	RIVERSIDE	WEST COLUMBIA	77486	Non-Lead - Copper	No	After 2014		Non-Lead - Plastic	After 2014		Non-Lead	No	No		Single Family Residence				Tier 5		
198398	2186	RIVERSIDE	WEST COLUMBIA	77486	Non-Lead - Copper	No	Between 1989 and 2014		Non-Lead - Plastic	Between 1989 and 2014		Non-Lead	No	No		Single Family Residence				Tier 5		
198398	2186	RIVERSIDE	WEST COLUMBIA	77486	Non-Lead - Copper	No	Between 1989 and 2014		Non-Lead - Plastic	Between 1989 and 2014		Non-Lead	No	No		Single Family Residence				Tier 5		
198399	2182	RIVERSIDE	WEST COLUMBIA	77486	Non-Lead - Copper	No	Between 1989 and 2014		Non-Lead - Plastic	Between 1989 and 2014		Non-Lead	No	No		Single Family Residence				Tier 5		
198400	2178	RIVERSIDE	WEST COLUMBIA	77486	Non-Lead - Copper	No	Between 1989 and 2014		Non-Lead - Plastic	Between 1989 and 2014		Non-Lead	No	No		Single Family Residence				Tier 5		
198401	2170	RIVERSIDE	WEST COLUMBIA	77486	Non-Lead - Copper	No	Between 1989 and 2014		Non-Lead - Plastic	Between 1989 and 2014		Non-Lead	No	No		Single Family Residence				Tier 5		
198403	2162	RIVERSIDE	WEST COLUMBIA	77486	Non-Lead - Copper	No	Before 1989		Non-Lead - Plastic	Before 1989		Non-Lead	No	No		Single Family Residence				Tier 5		
198404	2158	RIVERSIDE	WEST COLUMBIA	77486	Non-Lead - Copper	No	Between 1989 and 2014		Non-Lead - Plastic	Between 1989 and 2014		Non-Lead	No	No		Single Family Residence				Tier 5		
198406	2150	RIVERSIDE	WEST COLUMBIA	77486	Non-Lead - Copper	No	Before 1989		Non-Lead - Plastic	Before 1989		Non-Lead	No	No		Single Family Residence				Tier 5		
198407	2146	RIVERSIDE	WEST COLUMBIA	77486	Non-Lead - Copper	No	Between 1989 and 2014		Non-Lead - Plastic	Between 1989 and 2014		Non-Lead	No	No		Single Family Residence				Tier 5		
198408	2142	RIVERSIDE	WEST COLUMBIA	77486	Non-Lead - Copper	No	Before 1989		Non-Lead - Plastic	Before 1989		Non-Lead	No	No		Single Family Residence				Tier 5		
198410	150	PLEASANT VALLEY	WEST COLUMBIA	77486	Non-Lead - Copper	No	Before 1989		Non-Lead - Plastic	Before 1989		Non-Lead	No	No		Single Family Residence				Tier 5		
198411	146	PLEASANT VALLEY	WEST COLUMBIA	77486	Non-Lead - Copper	No	Before 1989		Non-Lead - Plastic	Before 1989		Non-Lead	No	No		Single Family Residence				Tier 5		
198413	138	PLEASANT VALLEY	WEST COLUMBIA	77486	Non-Lead - Copper	No	Between 1989 and 2014		Non-Lead - Plastic	Between 1989 and 2014		Non-Lead	No	No		Single Family Residence				Tier 5		
198415	126	PLEASANT VALLEY	WEST COLUMBIA	77486	Non-Lead - Plastic	No	After 2014		Non-Lead - Plastic	After 2014		Non-Lead	No	No		Single Family Residence				Tier 5		
198416	122	PLEASANT VALLEY	WEST COLUMBIA	77486	Non-Lead - Plastic	No	After 2014		Non-Lead - Plastic	After 2014		Non-Lead	No	No		Single Family Residence				Tier 5		
198417	118	PLEASANT VALLEY	WEST COLUMBIA	77486	Non-Lead - Copper	No	Between 1989 and 2014		Non-Lead - Plastic	Between 1989 and 2014		Non-Lead	No	No		Single Family Residence				Tier 5		
198419	110	PLEASANT VALLEY	WEST COLUMBIA	77486	Non-Lead - Copper	No	Between 1989 and 2014		Non-Lead - Plastic	Between 1989 and 2014		Non-Lead	No	No		Single Family Residence				Tier 5		
198420	106	PLEASANT VALLEY	WEST COLUMBIA	77486	Non-Lead - Copper	No	Between 1989 and 2014		Non-Lead - Plastic	Between 1989 and 2014		Non-Lead	No	No		Single Family Residence				Tier 5		

[illegible]

198584	2222	LAKE FORREST	WEST COLUMBIA	77486	Non-Lead - Copper	No	Before 1989		Non-Lead - Plastic	Before 1989		Non-Lead	No	No		Single Family Residence				Tier 5		
198586	2277	LAKE FORREST	WEST COLUMBIA	77486	Non-Lead - Plastic	No	After 2014		Non-Lead - Plastic	After 2014		Non-Lead	No	No		Single Family Residence				Tier 5		
198587	2210	LAKE FORREST	WEST COLUMBIA	77486	Non-Lead - Plastic	No	After 2014		Non-Lead - Plastic	After 2014		Non-Lead	No	No		Single Family Residence				Tier 5		
198588	2206	LAKE FORREST	WEST COLUMBIA	77486	Non-Lead - Copper	No	Between 1989 and 2014		Non-Lead - Plastic	Between 1989 and 2014		Non-Lead	No	No		Single Family Residence				Tier 5		
198589	2202	LAKE FORREST	WEST COLUMBIA	77486	Non-Lead - Copper	No	Before 1989		Non-Lead - Plastic	Before 1989		Non-Lead	No	No		Single Family Residence				Tier 5		
198591	2207	RIVEROAKS	WEST COLUMBIA	77486	Non-Lead - Copper	No	Before 1989		Non-Lead - Plastic	Before 1989		Non-Lead	No	No		Single Family Residence				Tier 5		
198592	2211	RIVEROAKS	WEST COLUMBIA	77486	Non-Lead - Copper	No	Before 1989		Non-Lead - Plastic	Before 1989		Non-Lead	No	No		Single Family Residence				Tier 5		
198593	2215	RIVEROAKS	WEST COLUMBIA	77486	Non-Lead - Copper	No	Before 1989		Non-Lead - Plastic	Before 1989		Non-Lead	No	No		Single Family Residence				Tier 5		
198593	2215	RIVEROAKS	WEST COLUMBIA	77486	Non-Lead - Copper	No	Between 1989 and 2014		Non-Lead - Plastic	Between 1989 and 2014		Non-Lead	No	No		Single Family Residence				Tier 5		
198594	2219	RIVEROAKS	WEST COLUMBIA	77486	Non-Lead - Copper	No	Before 1989		Non-Lead - Plastic	Before 1989		Non-Lead	No	No		Single Family Residence				Tier 5		
198596	2227	RIVEROAKS	WEST COLUMBIA	77486	Non-Lead - Plastic	No	After 2014		Non-Lead - Plastic	After 2014		Non-Lead	No	No		Single Family Residence				Tier 5		
198597	2231	RIVER OAKS	WEST COLUMBIA	77486	Non-Lead - Copper	No	Between 1989 and 2014		Non-Lead - Plastic	Between 1989 and 2014		Non-Lead	No	No		Single Family Residence				Tier 5		
198599	2239	RIVEROAKS	WEST COLUMBIA	77486	Non-Lead - Copper	No	Before 1989		Non-Lead - Plastic	Before 1989		Non-Lead	No	No		Single Family Residence				Tier 5		
198600	2243	RIVEROAKS	WEST COLUMBIA	77486	Non-Lead - Copper	No	Before 1989		Non-Lead - Plastic	Before 1989		Non-Lead	No	No		Single Family Residence				Tier 5		
198602	2251	RIVEROAKS	WEST COLUMBIA	77486	Non-Lead - Plastic	No	After 2014		Non-Lead - Plastic	After 2014		Non-Lead	No	No		Single Family Residence				Tier 5		
198603	2255	RIVEROAKS	WEST COLUMBIA	77486	Non-Lead - Copper	No	Before 1989		Non-Lead - Plastic	Before 1989		Non-Lead	No	No		Single Family Residence				Tier 5		
198604	2259	RIVEROAKS	WEST COLUMBIA	77486	Non-Lead - Copper	No	Before 1989		Non-Lead - Plastic	Before 1989		Non-Lead	No	No		Single Family Residence				Tier 5		
198605	2263	RIVEROAKS	WEST COLUMBIA	77486	Non-Lead - Copper	No	Before 1989		Non-Lead - Plastic	Before 1989		Non-Lead	No	No		Single Family Residence				Tier 5		
198606	2267	RIVEROAKS	WEST COLUMBIA	77486	Non-Lead - Copper	No	Before 1989		Non-Lead - Plastic	Before 1989		Non-Lead	No	No		Single Family Residence				Tier 5		
198608	2275	RIVEROAKS	WEST COLUMBIA	77486	Non-Lead - Copper	No	Before 1989		Non-Lead - Plastic	Before 1989		Non-Lead	No	No		Single Family Residence				Tier 5		
198609	2279	RIVEROAKS	WEST COLUMBIA	77486	Non-Lead - Copper	No	Between 1989 and 2014		Non-Lead - Plastic	Between 1989 and 2014		Non-Lead	No	No		Single Family Residence				Tier 5		
198610	2194	TWIN LAKES	WEST COLUMBIA	77486	Non-Lead - Copper	No	Before 1989		Non-Lead - Plastic	Before 1989		Non-Lead	No	No		Single Family Residence				Tier 5		
198611	2190	TWIN LAKES	WEST COLUMBIA	77486	Non-Lead - Plastic	No	After 2014		Non-Lead - Plastic	After 2014		Non-Lead	No	No		Single Family Residence				Tier 5		
198613	2182	TWIN LAKES	WEST COLUMBIA	77486	Non-Lead - Copper	No	Before 1989		Non-Lead - Plastic	Before 1989		Non-Lead	No	No		Single Family Residence				Tier 5		
198615	2174	TWIN LAKES	WEST COLUMBIA	77486	Non-Lead - Plastic	No	After 2014		Non-Lead - Plastic	After 2014		Non-Lead	No	No		Single Family Residence				Tier 5		
198616	2170	TWIN LAKES	WEST COLUMBIA	77486	Non-Lead - Plastic	No	After 2014		Non-Lead - Plastic	After 2014		Non-Lead	No	No		Single Family Residence				Tier 5		
198618	2166	TWIN LAKES	WEST COLUMBIA	77486	Non-Lead - Copper	No	After 2014		Non-Lead - Plastic	After 2014		Non-Lead	No	No		Single Family Residence				Tier 5		
198620	2162	TWIN LAKES	WEST COLUMBIA	77486	Non-Lead - Plastic	No	After 2014		Non-Lead - Plastic	After 2014		Non-Lead	No	No		Single Family Residence				Tier 5		
198624	2150	TWIN LAKES	WEST COLUMBIA	77486	Non-Lead - Copper	No	Between 1989 and 2014		Non-Lead - Plastic	Between 1989 and 2014		Non-Lead	No	No		Single Family Residence				Tier 5		
198625	2142	TWIN LAKES	WEST COLUMBIA	77486	Non-Lead - Plastic	No	After 2014		Non-Lead - Plastic	After 2014		Non-Lead	No	No		Single Family Residence				Tier 5		
198626	2138	TWIN LAKES	WEST COLUMBIA	77486	Non-Lead - Plastic	No	After 2014		Non-Lead - Plastic	After 2014		Non-Lead	No	No		Single Family Residence				Tier 5		
198631	2118	TWIN LAKES	WEST COLUMBIA	77486	Non-Lead - Copper	No	Before 1989		Non-Lead - Plastic	Before 1989		Non-Lead	No	No		Single Family Residence				Tier 5		
198637	2052	TWIN LAKES	WEST COLUMBIA	77486	Non-Lead - Copper	No	After 2014		Non-Lead - Plastic	After 2014		Non-Lead	No	No		Single Family Residence				Tier 5		
198638	2048	TWIN LAKES	WEST COLUMBIA	77486	Non-Lead - Copper	No	After 2014		Non-Lead - Plastic	After 2014		Non-Lead	No	No		Single Family Residence				Tier 5		
198640	2040	TWIN LAKES	WEST COLUMBIA	77486	Non-Lead - Plastic	No	After 2014		Non-Lead - Plastic	After 2014		Non-Lead	No	No		Single Family Residence				Tier 5		
198641	2036	TWIN LAKES	WEST COLUMBIA	77486	Non-Lead - Plastic	No	After 2014		Non-Lead - Plastic	After 2014		Non-Lead	No	No		Single Family Residence				Tier 5		
198643	2028	TWIN LAKES	WEST COLUMBIA	77486	Non-Lead - Plastic	No	After 2014		Non-Lead - Plastic	After 2014		Non-Lead	No	No		Single Family Residence				Tier 5		
198644	2024	TWIN LAKES	WEST COLUMBIA	77486	Non-Lead - Plastic	No	After 2014		Non-Lead - Plastic	After 2014		Non-Lead	No	No		Single Family Residence				Tier 5		
198647	2012	TWIN LAKES	WEST COLUMBIA	77486	Non-Lead - Copper	No	Before 1989		Non-Lead - Plastic	Before 1989		Non-Lead	No	No		Single Family Residence				Tier 5		
198648	2008	TWIN LAKES	WEST COLUMBIA	77486	Non-Lead - Plastic	No	After 2014		Non-Lead - Plastic	After 2014		Non-Lead	No	No		Single Family Residence				Tier 5		
198649	2004	TWIN LAKES	WEST COLUMBIA	77486	Non-Lead - Plastic	No	After 2014		Non-Lead - Plastic	After 2014		Non-Lead	No	No		Single Family Residence				Tier 5		
198652	2277	LAKEWOOD	WEST COLUMBIA	77486	Non-Lead - Copper	No	Between 1989 and 2014		Non-Lead - Plastic	Between 1989 and 2014		Non-Lead	No	No		Single Family Residence				Tier 5		
198654	2267	LAKEWOOD	WEST COLUMBIA	77486	Non-Lead - Copper	No	Before 1989		Non-Lead - Plastic	Before 1989		Non-Lead	No	No		Single Family Residence				Tier 5		
198656	2259	LAKEWOOD	WEST COLUMBIA	77486	Non-Lead - Copper	No	Between 1989 and 2014		Non-Lead - Plastic	Between 1989 and 2014		Non-Lead	No	No		Single Family Residence				Tier 5		
198658	2251	LAKEWOOD	WEST COLUMBIA	77486	Non-Lead - Copper	No	Before 1989		Non-Lead - Plastic	Before 1989		Non-Lead	No	No		Single Family Residence				Tier 5		
198659	2247	LAKEWOOD	WEST COLUMBIA	77486	Non-Lead - Plastic	No	After 2014		Non-Lead - Plastic	After 2014		Non-Lead	No	No		Single Family Residence				Tier 5		
198660	2243	LAKEWOOD	WEST COLUMBIA	77486	Non-Lead - Plastic	No	After 2014		Non-Lead - Plastic	After 2014		Non-Lead	No	No		Single Family Residence				Tier 5		
198662	2235	LAKEWOOD	WEST COLUMBIA	77486	Non-Lead - Plastic	No	After 2014		Non-Lead - Plastic	After 2014		Non-Lead	No	No		Single Family Residence				Tier 5		
198664	2227	LAKEWOOD	WEST COLUMBIA	77486	Non-Lead - Plastic	No	After 2014		Non-Lead - Plastic	After 2014		Non-Lead	No	No		Single Family Residence				Tier 5		
198665	2223	LAKEWOOD	WEST COLUMBIA	77486	Non-Lead - Plastic	No	After 2014		Non-Lead - Plastic	After 2014		Non-Lead	No	No		Single Family Residence				Tier 5		
198666	2219	LAKEWOOD	WEST COLUMBIA	77486	Non-Lead - Plastic	No	After 2014		Non-Lead - Plastic	After 2014		Non-Lead	No	No		Single Family Residence				Tier 5		
198667	2215	LAKEWOOD	WEST COLUMBIA	77486	Non-Lead - Plastic	No	After 2014		Non-Lead - Plastic	After 2014		Non-Lead	No	No		Single Family Residence				Tier 5		
198668	2211	LAKEWOOD	WEST COLUMBIA	77486	Non-Lead - Copper	No	Between 1989 and 2014		Non-Lead - Plastic	Between 1989 and 2014		Non-Lead	No	No		Single Family Residence				Tier 5		
198670	2220	RIVEROAKS	WEST COLUMBIA	77486	Non-Lead - Copper	No	Before 1989		Non-Lead - Plastic	Before 1989		Non-Lead	No	No		Single Family Residence				Tier 5		
198671	2224	RIVEROAKS	WEST COLUMBIA	77486	Non-Lead - Plastic	No	After 2014		Non-Lead - Plastic	After 2014		Non-Lead	No	No		Single Family Residence				Tier 5		
198672	2228	RIVEROAKS	WEST COLUMBIA	77486	Non-Lead - Copper	No	After 2014		Non-Lead - Plastic	After 2014		Non-Lead	No	No		Single Family Residence				Tier 5		
198673	2232	RIVEROAKS	WEST COLUMBIA	77486	Non-Lead - Copper	No	Before 1989		Non-Lead - Plastic	Before 1989		Non-Lead	No	No		Single Family Residence				Tier 5		
198674	2236	RIVEROAKS	WEST COLUMBIA	77486	Non-Lead - Copper	No	Before 1989		Non-Lead - Plastic	Before 1989		Non-Lead	No	No		Single Family Residence				Tier 5		
198675	2240	RIVEROAKS	WEST COLUMBIA	77486	Non-Lead - Plastic	No	After 2014		Non-Lead - Plastic	After 2014		Non-Lead	No	No		Single Family Residence				Tier 5		
198676	2244	RIVEROAKS DRIVE	WEST COLUMBIA	77486	Non-Lead - Plastic	No	After 2014		Non-Lead - Plastic	After 2014		Non-Lead	No	No		Single Family Residence				Tier 5		
198677	2248	RIVEROAKS DRIVE	WEST COLUMBIA	77486	Non-Lead - Plastic	No	After 2014		Non-Lead - Plastic	After 2014		Non-Lead	No	No		Single Family Residence				Tier 5		
198678	2252	RIVEROAKS DRIVE	WEST COLUMBIA	77486	Non-Lead - Plastic	No	After 2014		Non-Lead - Plastic	After 2014		Non-Lead	No	No		Single Family Residence				Tier 5		

[illegible]

198762	224	TWIN LAKES	WEST COLUMBIA	77486	Non-Lead - Copper	No	Before 1989		Non-Lead - Plastic	Before 1989		Non-Lead	No	No		Single Family Residence				Tier 5		
198765	219	FOREST PARK	WEST COLUMBIA	77486	Non-Lead - Copper	No	Before 1989		Non-Lead - Plastic	Before 1989		Non-Lead	No	No		Single Family Residence				Tier 5		
198767	227	FOREST PARK	WEST COLUMBIA	77486	Non-Lead - Plastic	No	After 2014		Non-Lead - Plastic	After 2014		Non-Lead	No	No		Single Family Residence				Tier 5		
198768	231	FOREST PARK	WEST COLUMBIA	77486	Non-Lead - Plastic	No	After 2014		Non-Lead - Plastic	After 2014		Non-Lead	No	No		Single Family Residence				Tier 5		
198769	235	FOREST PARK	WEST COLUMBIA	77486	Non-Lead - Plastic	No	After 2014		Non-Lead - Plastic	After 2014		Non-Lead	No	No		Single Family Residence				Tier 5		
198771	243	FOREST PARK	WEST COLUMBIA	77486	Non-Lead - Copper	No	Before 1989		Non-Lead - Plastic	Before 1989		Non-Lead	No	No		Single Family Residence				Tier 5		
198772	247	FOREST PARK	WEST COLUMBIA	77486	Non-Lead - Copper	No	After 2014		Non-Lead - Plastic	After 2014		Non-Lead	No	No		Single Family Residence				Tier 5		
198773	251	FOREST PARK	WEST COLUMBIA	77486	Non-Lead - Copper	No	After 2014		Non-Lead - Plastic	After 2014		Non-Lead	No	No		Single Family Residence				Tier 5		
198774	255	FOREST PARK	WEST COLUMBIA	77486	Non-Lead - Copper	No	Before 1989		Non-Lead - Plastic	Before 1989		Non-Lead	No	No		Single Family Residence				Tier 5		
198775	259	FOREST PARK	WEST COLUMBIA	77486	Non-Lead - Copper	No	Before 1989		Non-Lead - Plastic	Before 1989		Non-Lead	No	No		Single Family Residence				Tier 5		
198776	263	FOREST PARK	WEST COLUMBIA	77486	Non-Lead - Copper	No	After 2014		Non-Lead - Plastic	After 2014		Non-Lead	No	No		Single Family Residence				Tier 5		
198777	267	FOREST PARK	WEST COLUMBIA	77486	Non-Lead - Copper	No	Before 1989		Non-Lead - Plastic	Before 1989		Non-Lead	No	No		Single Family Residence				Tier 5		
198778	288	TWIN LAKES	WEST COLUMBIA	77486	Non-Lead - Copper	No	Before 1989		Non-Lead - Plastic	Before 1989		Non-Lead	No	No		Single Family Residence				Tier 5		
198779	266	EDGEWATER	WEST COLUMBIA	77486	Non-Lead - Copper	No	Before 1989		Non-Lead - Plastic	Before 1989		Non-Lead	No	No		Single Family Residence				Tier 5		
198780	262	EDGEWATER	WEST COLUMBIA	77486	Non-Lead - Copper	No	Before 1989		Non-Lead - Plastic	Before 1989		Non-Lead	No	No		Single Family Residence				Tier 5		
198781	258	EDGEWATER	WEST COLUMBIA	77486	Non-Lead - Copper	No	Before 1989		Non-Lead - Plastic	Before 1989		Non-Lead	No	No		Single Family Residence				Tier 5		
198782	254	EDGEWATER	WEST COLUMBIA	77486	Non-Lead - Copper	No	Before 1989		Non-Lead - Plastic	Before 1989		Non-Lead	No	No		Single Family Residence				Tier 5		
198783	250	EDGEWATER	WEST COLUMBIA	77486	Non-Lead - Copper	No	Before 1989		Non-Lead - Plastic	Before 1989		Non-Lead	No	No		Single Family Residence				Tier 5		
198784	246	EDGEWATER	WEST COLUMBIA	77486	Non-Lead - Copper	No	Before 1989		Non-Lead - Plastic	Before 1989		Non-Lead	No	No		Single Family Residence				Tier 5		
198786	238	EDGEWATER	WEST COLUMBIA	77486	Non-Lead - Copper	No	Between 1989 and 2014		Non-Lead - Plastic	Between 1989 and 2014		Non-Lead	No	No		Single Family Residence				Tier 5		
198787	234	EDGEWATER	WEST COLUMBIA	77486	Non-Lead - Copper	No	Before 1989		Non-Lead - Plastic	Before 1989		Non-Lead	No	No		Single Family Residence				Tier 5		
198788	230	EDGEWATER	WEST COLUMBIA	77486	Non-Lead - Copper	No	After 2014		Non-Lead - Plastic	After 2014		Non-Lead	No	No		Single Family Residence				Tier 5		
198789	1	EDGEWATER	WEST COLUMBIA	77486	Non-Lead - Plastic	No	After 2014		Non-Lead - Plastic	After 2014		Non-Lead	No	No		Single Family Residence				Tier 5		
198790	222	EDGEWATER	WEST COLUMBIA	77486	Non-Lead - Plastic	No	After 2014		Non-Lead - Plastic	After 2014		Non-Lead	No	No		Single Family Residence				Tier 5		
198791	218	EDGEWATER	WEST COLUMBIA	77486	Non-Lead - Plastic	No	After 2014		Non-Lead - Plastic	After 2014		Non-Lead	No	No		Single Family Residence				Tier 5		
198792	201	MONTCLAIRE	WEST COLUMBIA	77486	Non-Lead - Copper	No	Between 1989 and 2014		Non-Lead - Plastic	Between 1989 and 2014		Non-Lead	No	No		Single Family Residence				Tier 5		
198793	205	MONTCLAIRE	WEST COLUMBIA	77486	Non-Lead - Copper	No	Before 1989		Non-Lead - Plastic	Before 1989		Non-Lead	No	No		Single Family Residence				Tier 5		
198794	209	MONTCLAIRE	WEST COLUMBIA	77486	Non-Lead - Copper	No	Before 1989		Non-Lead - Plastic	Before 1989		Non-Lead	No	No		Single Family Residence				Tier 5		
198796	217	MONTCLAIRE	WEST COLUMBIA	77486	Non-Lead - Copper	No	Before 1989		Non-Lead - Plastic	Before 1989		Non-Lead	No	No		Single Family Residence				Tier 5		
198798	225	MONTCLAIRE	WEST COLUMBIA	77486	Non-Lead - Copper	No	Before 1989		Non-Lead - Plastic	Before 1989		Non-Lead	No	No		Single Family Residence				Tier 5		
198805	253	MONTCLAIRE	WEST COLUMBIA	77486	Non-Lead - Plastic	No	After 2014		Non-Lead - Plastic	After 2014		Non-Lead	No	No		Single Family Residence				Tier 5		
198808	246	MONTCLAIRE	WEST COLUMBIA	77486	Non-Lead - Plastic	No	After 2014		Non-Lead - Plastic	After 2014		Non-Lead	No	No		Single Family Residence				Tier 5		
198809	242	MONTCLAIRE	WEST COLUMBIA	77486	Non-Lead - Plastic	No	After 2014		Non-Lead - Plastic	After 2014		Non-Lead	No	No		Single Family Residence				Tier 5		
198810	238	MONTCLAIRE	WEST COLUMBIA	77486	Non-Lead - Plastic	No	After 2014		Non-Lead - Plastic	After 2014		Non-Lead	No	No		Single Family Residence				Tier 5		
198812	230	MONTCLAIRE	WEST COLUMBIA	77486	Non-Lead - Plastic	No	After 2014		Non-Lead - Plastic	After 2014		Non-Lead	No	No		Multiple Family Residence				Tier 5		
198813	226	MONTCLAIRE	WEST COLUMBIA	77486	Non-Lead - Plastic	No	After 2014		Non-Lead - Plastic	After 2014		Non-Lead	No	No		Single Family Residence				Tier 5		
198814	222	MONTCLAIRE	WEST COLUMBIA	77486	Non-Lead - Plastic	No	After 2014		Non-Lead - Plastic	After 2014		Non-Lead	No	No		Single Family Residence				Tier 5		
198815	218	MONTCLAIRE	WEST COLUMBIA	77486	Non-Lead - Plastic	No	After 2014		Non-Lead - Plastic	After 2014		Non-Lead	No	No		Single Family Residence				Tier 5		
198817	210	MONTCLAIRE	WEST COLUMBIA	77486	Non-Lead - Copper	No	After 2014		Non-Lead - Plastic	After 2014		Non-Lead	No	No		Single Family Residence				Tier 5		
198818	206	MONTCLAIRE	WEST COLUMBIA	77486	Non-Lead - Copper	No	Before 1989		Non-Lead - Plastic	Before 1989		Non-Lead	No	No		Single Family Residence				Tier 5		
198819	202	MONTCLAIRE	WEST COLUMBIA	77486	Non-Lead - Plastic	No	After 2014		Non-Lead - Plastic	After 2014		Non-Lead	No	No		Single Family Residence				Tier 5		
198821	207	PRESSCOTT	WEST COLUMBIA	77486	Non-Lead - Copper	No	Between 1989 and 2014		Non-Lead - Plastic	Between 1989 and 2014		Non-Lead	No	No		Single Family Residence				Tier 5		
198822	211	PRESSCOTT	WEST COLUMBIA	77486	Non-Lead - Copper	No	After 2014		Non-Lead - Plastic	After 2014		Non-Lead	No	No		Single Family Residence				Tier 5		
198824	219	PRESSCOTT	WEST COLUMBIA	77486	Non-Lead - Plastic	No	After 2014		Non-Lead - Plastic	After 2014		Non-Lead	No	No		Single Family Residence				Tier 5		
198825	223	PRESSCOTT	WEST COLUMBIA	77486	Non-Lead - Copper	No	Between 1989 and 2014		Non-Lead - Plastic	Between 1989 and 2014		Non-Lead	No	No		Single Family Residence				Tier 5		
198826	227	PRESSCOTT	WEST COLUMBIA	77486	Non-Lead - Copper	No	Before 1989		Non-Lead - Plastic	Before 1989		Non-Lead	No	No		Single Family Residence				Tier 5		
198827	231	PRESSCOTT	WEST COLUMBIA	77486	Non-Lead - Plastic	No	After 2014		Non-Lead - Plastic	After 2014		Non-Lead	No	No		Single Family Residence				Tier 5		
198828	235	PRESSCOTT	WEST COLUMBIA	77486	Non-Lead - Plastic	No	After 2014		Non-Lead - Plastic	After 2014		Non-Lead	No	No		Single Family Residence				Tier 5		
198830	241	PRESSCOTT	WEST COLUMBIA	77486	Non-Lead - Plastic	No	After 2014		Non-Lead - Plastic	After 2014		Non-Lead	No	No		Single Family Residence				Tier 5		
198831	245	PRESSCOTT	WEST COLUMBIA	77486	Non-Lead - Copper	No	Between 1989 and 2014		Non-Lead - Plastic	Between 1989 and 2014		Non-Lead	No	No		Single Family Residence				Tier 5		
198833	253	PRESSCOTT	WEST COLUMBIA	77486	Non-Lead - Copper	No	Before 1989		Non-Lead - Plastic	Before 1989		Non-Lead	No	No		Single Family Residence				Tier 5		
198834	257	PRESSCOTT	WEST COLUMBIA	77486	Non-Lead - Copper	No	Between 1989 and 2014		Non-Lead - Plastic	Between 1989 and 2014		Non-Lead	No	No		Single Family Residence				Tier 5		
198836	322	TWIN LAKES	WEST COLUMBIA	77486	Non-Lead - Copper	No	Before 1989		Non-Lead - Plastic	Before 1989		Non-Lead	No	No		Single Family Residence				Tier 5		
198837	318	TWIN LAKES	WEST COLUMBIA	77486	Non-Lead - Copper	No	Before 1989		Non-Lead - Plastic	Before 1989		Non-Lead	No	No		Single Family Residence				Tier 5		
198839	310	TWIN LAKES	WEST COLUMBIA	77486	Non-Lead - Copper	No	Before 1989		Non-Lead - Plastic	Before 1989		Non-Lead	No	No		Single Family Residence				Tier 5		
198840	306	TWIN LAKES	WEST COLUMBIA	77486	Non-Lead - Copper	No	Before 1989		Non-Lead - Plastic	Before 1989		Non-Lead	No	No		Single Family Residence				Tier 5		
198841	256	FOREST PARK	WEST COLUMBIA	77486	Non-Lead - Plastic	No	After 2014		Non-Lead - Plastic	After 2014		Non-Lead	No	No		Single Family Residence				Tier 5		
198843	248	FOREST PARK	WEST COLUMBIA	77486	Non-Lead - Copper	No	After 2014		Non-Lead - Plastic	After 2014		Non-Lead	No	No		Single Family Residence				Tier 5		
198844	244	FOREST PARK	WEST COLUMBIA	77486	Non-Lead - Copper	No	Before 1989		Non-Lead - Plastic	Before 1989		Non-Lead	No	No		Single Family Residence				Tier 5		
198845	240	FOREST PARK	WEST COLUMBIA	77486	Non-Lead - Plastic	No	After 2014		Non-Lead - Plastic	After 2014		Non-Lead	No	No		Single Family Residence				Tier 5		
198847	232	FOREST PARK	WEST COLUMBIA	77486	Non-Lead - Copper	No	Before 1989		Non-Lead - Plastic	Before 1989		Non-Lead	No	No		Single Family Residence				Tier 5		
198848	228	FOREST PARK	WEST COLUMBIA	77486	Non-Lead - Copper	No	Before 1989		Non-Lead - Plastic	Before 1989		Non-Lead	No	No		Single Family Residence				Tier 5		

198849	224	FOREST PARK	WEST COLUMBIA	77486	Non-Lead - Copper	No	Before 1989		Non-Lead - Plastic	Before 1989		Non-Lead	No	No		Single Family Residence				Tier 5		
198850	220	FOREST PARK	WEST COLUMBIA	77486	Non-Lead - Copper	No	Before 1989		Non-Lead - Plastic	Before 1989		Non-Lead	No	No		Single Family Residence				Tier 5		
198851	216	FOREST PARK	WEST COLUMBIA	77486	Non-Lead - Plastic	No	After 2014		Non-Lead - Plastic	After 2014		Non-Lead	No	No		Single Family Residence				Tier 5		
198853	208	FOREST PARK	WEST COLUMBIA	77486	Non-Lead - Plastic	No	After 2014		Non-Lead - Plastic	After 2014		Non-Lead	No	No		Single Family Residence				Tier 5		
198855	200	FOREST PARK	WEST COLUMBIA	77486	Non-Lead - Plastic	No	After 2014		Non-Lead - Plastic	After 2014		Non-Lead	No	No		Single Family Residence				Tier 5		
198856	201	INWOOD	WEST COLUMBIA	77486	Non-Lead - Copper	No	Before 1989		Non-Lead - Plastic	Before 1989		Non-Lead	No	No		Single Family Residence				Tier 5		
198857	205	INWOOD	WEST COLUMBIA	77486	Non-Lead - Copper	No	Between 1989 and 2014		Non-Lead - Plastic	Between 1989 and 2014		Non-Lead	No	No		Single Family Residence				Tier 5		
198860	213	INWOOD	WEST COLUMBIA	77486	Non-Lead - Copper	No	Before 1989		Non-Lead - Plastic	Before 1989		Non-Lead	No	No		Single Family Residence				Tier 5		
198861	217	INWOOD	WEST COLUMBIA	77486	Non-Lead - Copper	No	Between 1989 and 2014		Non-Lead - Plastic	Between 1989 and 2014		Non-Lead	No	No		Single Family Residence				Tier 5		
198861	217	INWOOD	WEST COLUMBIA	77486	Non-Lead - Copper	No	Between 1989 and 2014		Non-Lead - Plastic	Between 1989 and 2014		Non-Lead	No	No		Single Family Residence				Tier 5		
198862	221	INWOOD	WEST COLUMBIA	77486	Non-Lead - Copper	No	After 2014		Non-Lead - Plastic	After 2014		Non-Lead	No	No		Single Family Residence				Tier 5		
198863	225	INWOOD	WEST COLUMBIA	77486	Non-Lead - Copper	No	Between 1989 and 2014		Non-Lead - Plastic	Between 1989 and 2014		Non-Lead	No	No		Single Family Residence				Tier 5		
198864	233	INWOOD	WEST COLUMBIA	77486	Non-Lead - Copper	No	Between 1989 and 2014		Non-Lead - Plastic	Between 1989 and 2014		Non-Lead	No	No		Single Family Residence				Tier 5		
198866	241	INWOOD	WEST COLUMBIA	77486	Non-Lead - Copper	No	Before 1989		Non-Lead - Plastic	Before 1989		Non-Lead	No	No		Single Family Residence				Tier 5		
198870	257	INWOOD	WEST COLUMBIA	77486	Non-Lead - Plastic	No	After 2014		Non-Lead - Plastic	After 2014		Non-Lead	No	No		Single Family Residence				Tier 5		
198871	261	INWOOD	WEST COLUMBIA	77486	Non-Lead - Plastic	No	After 2014		Non-Lead - Plastic	After 2014		Non-Lead	No	No		Single Family Residence				Tier 5		
198872	265	INWOOD	WEST COLUMBIA	77486	Non-Lead - Plastic	No	After 2014		Non-Lead - Plastic	After 2014		Non-Lead	No	No		Single Family Residence				Tier 5		
198876	264	PRESScott	WEST COLUMBIA	77486	Non-Lead - Copper	No	Between 1989 and 2014		Non-Lead - Plastic	Between 1989 and 2014		Non-Lead	No	No		Single Family Residence				Tier 5		
198878	256	PRESScott	WEST COLUMBIA	77486	Non-Lead - Plastic	No	After 2014		Non-Lead - Plastic	After 2014		Non-Lead	No	No		Single Family Residence				Tier 5		
198880	248	PRESScott	WEST COLUMBIA	77486	Non-Lead - Plastic	No	After 2014		Non-Lead - Plastic	After 2014		Non-Lead	No	No		Single Family Residence				Tier 5		
198881	244	PRESScott	WEST COLUMBIA	77486	Non-Lead - Plastic	No	After 2014		Non-Lead - Plastic	After 2014		Non-Lead	No	No		Single Family Residence				Tier 5		
198882	240	PRESScott	WEST COLUMBIA	77486	Non-Lead - Copper	No	After 2014		Non-Lead - Plastic	After 2014		Non-Lead	No	No		Single Family Residence				Tier 5		
198884	232	PRESScott	WEST COLUMBIA	77486	Non-Lead - Copper	No	Before 1989		Non-Lead - Plastic	Before 1989		Non-Lead	No	No		Single Family Residence				Tier 5		
198885	228	PRESScott	WEST COLUMBIA	77486	Non-Lead - Plastic	No	After 2014		Non-Lead - Plastic	After 2014		Non-Lead	No	No		Single Family Residence				Tier 5		
198886	224	PRESScott	WEST COLUMBIA	77486	Non-Lead - Copper	No	Before 1989		Non-Lead - Plastic	Before 1989		Non-Lead	No	No		Single Family Residence				Tier 5		
198887	220	PRESScott	WEST COLUMBIA	77486	Non-Lead - Copper	No	Before 1989		Non-Lead - Plastic	Before 1989		Non-Lead	No	No		Single Family Residence				Tier 5		
198888	212	PRESScott	WEST COLUMBIA	77486	Non-Lead - Plastic	No	After 2014		Non-Lead - Plastic	After 2014		Non-Lead	No	No		Single Family Residence				Tier 5		
198889	208	PRESScott	WEST COLUMBIA	77486	Non-Lead - Copper	No	After 2014		Non-Lead - Plastic	After 2014		Non-Lead	No	No		Single Family Residence				Tier 5		
198890	204	PRESScott	WEST COLUMBIA	77486	Non-Lead - Copper	No	Between 1989 and 2014		Non-Lead - Plastic	Between 1989 and 2014		Non-Lead	No	No		Single Family Residence				Tier 5		
198893	271	FREEMAN	WEST COLUMBIA	77486	Non-Lead - Plastic	No	After 2014		Non-Lead - Plastic	After 2014		Non-Lead	No	No		Single Family Residence				Tier 5		
198894	267	FREEMAN	WEST COLUMBIA	77486	Non-Lead - Plastic	No	After 2014		Non-Lead - Plastic	After 2014		Non-Lead	No	No		Single Family Residence				Tier 5		
198895	263	FREEMAN	WEST COLUMBIA	77486	Non-Lead - Copper	No	After 2014		Non-Lead - Plastic	After 2014		Non-Lead	No	No		Single Family Residence				Tier 5		
198896	259	FREEMAN	WEST COLUMBIA	77486	Non-Lead - Copper	No	Before 1989		Non-Lead - Plastic	Before 1989		Non-Lead	No	No		Single Family Residence				Tier 5		
198897	255	FREEMAN	WEST COLUMBIA	77486	Non-Lead - Copper	No	Between 1989 and 2014		Non-Lead - Plastic	Between 1989 and 2014		Non-Lead	No	No		Single Family Residence				Tier 5		
198898	251	FREEMAN	WEST COLUMBIA	77486	Non-Lead - Copper	No	After 2014		Non-Lead - Plastic	After 2014		Non-Lead	No	No		Single Family Residence				Tier 5		
198900	243	FREEMAN	WEST COLUMBIA	77486	Non-Lead - Copper	No	Between 1989 and 2014		Non-Lead - Plastic	Between 1989 and 2014		Non-Lead	No	No		Single Family Residence				Tier 5		
198901	235	FREEMAN	WEST COLUMBIA	77486	Non-Lead - Plastic	No	Before 1989		Non-Lead - Plastic	Before 1989		Non-Lead	No	No		Single Family Residence				Tier 5		
198901	235	FREEMAN	WEST COLUMBIA	77486	Non-Lead - Copper	No	After 2014		Non-Lead - Plastic	After 2014		Non-Lead	No	No		Single Family Residence				Tier 5		
198903	227	FREEMAN	WEST COLUMBIA	77486	Non-Lead - Plastic	No	After 2014		Non-Lead - Plastic	After 2014		Non-Lead	No	No		Single Family Residence				Tier 5		
198905	219	FREEMAN	WEST COLUMBIA	77486	Non-Lead - Copper	No	Between 1989 and 2014		Non-Lead - Plastic	Between 1989 and 2014		Non-Lead	No	No		Single Family Residence				Tier 5		
198906	215	FREEMAN	WEST COLUMBIA	77486	Non-Lead - Copper	No	After 2014		Non-Lead - Plastic	After 2014		Non-Lead	No	No		Single Family Residence				Tier 5		
198907	211	FREEMAN	WEST COLUMBIA	77486	Non-Lead - Copper	No	Between 1989 and 2014		Non-Lead - Plastic	Between 1989 and 2014		Non-Lead	No	No		Single Family Residence				Tier 5		
198909	203	FREEMAN	WEST COLUMBIA	77486	Non-Lead - Copper	No	Between 1989 and 2014		Non-Lead - Plastic	Between 1989 and 2014		Non-Lead	No	No		Single Family Residence				Tier 5		
198910	202	INWOOD	WEST COLUMBIA	77486	Non-Lead - Copper	No	Before 1989		Non-Lead - Plastic	Before 1989		Non-Lead	No	No		Single Family Residence				Tier 5		
198912	210	INWOOD	WEST COLUMBIA	77486	Non-Lead - Copper	No	Before 1989		Non-Lead - Plastic	Before 1989		Non-Lead	No	No		Single Family Residence				Tier 5		
198913	214	INWOOD	WEST COLUMBIA	77486	Non-Lead - Copper	No	Before 1989		Non-Lead - Plastic	Before 1989		Non-Lead	No	No		Single Family Residence				Tier 5		
198914	218	INWOOD	WEST COLUMBIA	77486	Non-Lead - Plastic	No	After 2014		Non-Lead - Plastic	After 2014		Non-Lead	No	No		Single Family Residence				Tier 5		
198915	222	INWOOD	WEST COLUMBIA	77486	Non-Lead - Copper	No	Between 1989 and 2014		Non-Lead - Plastic	Between 1989 and 2014		Non-Lead	No	No		Single Family Residence				Tier 5		
198917	230	INWOOD	WEST COLUMBIA	77486	Non-Lead - Copper	No	Between 1989 and 2014		Non-Lead - Plastic	Between 1989 and 2014		Non-Lead	No	No		Single Family Residence				Tier 5		
198918	234	INWOOD	WEST COLUMBIA	77486	Non-Lead - Copper	No	After 2014		Non-Lead - Plastic	After 2014		Non-Lead	No	No		Single Family Residence				Tier 5		
198920	242	INWOOD	WEST COLUMBIA	77486	Non-Lead - Copper	No	Between 1989 and 2014		Non-Lead - Plastic	Between 1989 and 2014		Non-Lead	No	No		Single Family Residence				Tier 5		
198920	242	INWOOD	WEST COLUMBIA	77486	Non-Lead - Copper	No	After 2014		Non-Lead - Plastic	After 2014		Non-Lead	No	No		Single Family Residence				Tier 5		
198922	250	INWOOD	WEST COLUMBIA	77486	Non-Lead - Copper	No	Between 1989 and 2014		Non-Lead - Plastic	Between 1989 and 2014		Non-Lead	No	No		Single Family Residence				Tier 5		
198923	254	INWOOD	WEST COLUMBIA	77486	Non-Lead - Copper	No	After 2014		Non-Lead - Plastic	After 2014		Non-Lead	No	No		Single Family Residence				Tier 5		
198924	258	INWOOD DR	WEST COLUMBIA	77486	Non-Lead - Copper	No	After 2014		Non-Lead - Plastic	After 2014		Non-Lead	No	No		Single Family Residence				Tier 5		
198925	262	INWOOD	WEST COLUMBIA	77486	Non-Lead - Copper	No	Before 1989		Non-Lead - Plastic	Before 1989		Non-Lead	No	No		Single Family Residence				Tier 5		
198926	266	INWOOD	WEST COLUMBIA	77486	Non-Lead - Copper	No	Before 1989		Non-Lead - Plastic	Before 1989		Non-Lead	No	No		Single Family Residence				Tier 5		
198927	270	INWOOD	WEST COLUMBIA	77486	Non-Lead - Copper	No	Before 1989		Non-Lead - Plastic	Before 1989		Non-Lead	No	No		Single Family Residence				Tier 5		
198928	274	INWOOD	WEST COLUMBIA	77486	Non-Lead - Copper	No	Before 1989		Non-Lead - Plastic	Before 1989		Non-Lead	No	No		Single Family Residence				Tier 5		
198929	257	WOODHAVEN	WEST COLUMBIA	77486	Non-Lead - Copper	No	Between 1989 and 2014		Non-Lead - Plastic	Between 1989 and 2014		Non-Lead	No	No		Single Family Residence				Tier 5		
198931	253	WOOD HAVEN	WEST COLUMBIA	77486	Non-Lead - Copper	No	Between 1989 and 2014		Non-Lead - Plastic	Between 1989 and 2014		Non-Lead	No	No		Single Family Residence				Tier 5		
198932	245	WOOD HAVEN	WEST COLUMBIA	77486	Non-Lead - Plastic	No	After 2014		Non-Lead - Plastic	After 2014		Non-Lead	No	No		Single Family Residence				Tier 5		

198933	241	WOOD HAVEN	WEST COLUMBIA	77486	Non-Lead - Plastic	No	After 2014		Non-Lead - Plastic	After 2014		Non-Lead	No	No		Single Family Residence				Tier 5		
198934	237	WOOD HAVEN	WEST COLUMBIA	77486	Non-Lead - Plastic	No	After 2014		Non-Lead - Plastic	After 2014		Non-Lead	No	No		Single Family Residence				Tier 5		
198935	233	WOODHAVEN	WEST COLUMBIA	77486	Non-Lead - Copper	No	Before 1989		Non-Lead - Plastic	Before 1989		Non-Lead	No	No		Single Family Residence				Tier 5		
198936	229	WOODHAVEN	WEST COLUMBIA	77486	Non-Lead - Copper	No	After 2014		Non-Lead - Plastic	After 2014		Non-Lead	No	No		Single Family Residence				Tier 5		
198937	225	WOODHAVEN	WEST COLUMBIA	77486	Non-Lead - Copper	No	Before 1989		Non-Lead - Plastic	Before 1989		Non-Lead	No	No		Single Family Residence				Tier 5		
198938	221	WOOD HAVEN	WEST COLUMBIA	77486	Non-Lead - Plastic	No	After 2014		Non-Lead - Plastic	After 2014		Non-Lead	No	No		Single Family Residence				Tier 5		
198939	217	WOODHAVEN	WEST COLUMBIA	77486	Non-Lead - Copper	No	Between 1989 and 2014		Non-Lead - Plastic	Between 1989 and 2014		Non-Lead	No	No		Single Family Residence				Tier 5		
198941	205	WOOD HAVEN	WEST COLUMBIA	77486	Non-Lead - Copper	No	Before 1989		Non-Lead - Plastic	Before 1989		Non-Lead	No	No		Single Family Residence				Tier 5		
198945	224	FREEMAN	WEST COLUMBIA	77486	Non-Lead - Plastic	No	After 2014		Non-Lead - Plastic	After 2014		Non-Lead	No	No		Single Family Residence				Tier 5		
198947	232	FREEMAN	WEST COLUMBIA	77486	Non-Lead - Copper	No	Before 1989		Non-Lead - Plastic	Before 1989		Non-Lead	No	No		Single Family Residence				Tier 5		
198948	236	FREEMAN	WEST COLUMBIA	77486	Non-Lead - Copper	No	Before 1989		Non-Lead - Plastic	Before 1989		Non-Lead	No	No		Single Family Residence				Tier 5		
198950	244	FREEMAN	WEST COLUMBIA	77486	Non-Lead - Copper	No	Before 1989		Non-Lead - Plastic	Before 1989		Non-Lead	No	No		Single Family Residence				Tier 5		
198951	248	FREEMAN	WEST COLUMBIA	77486	Non-Lead - Copper	No	After 2014		Non-Lead - Plastic	After 2014		Non-Lead	No	No		Single Family Residence				Tier 5		
198953	256	FREEMAN	WEST COLUMBIA	77486	Non-Lead - Copper	No	Before 1989		Non-Lead - Plastic	Before 1989		Non-Lead	No	No		Single Family Residence				Tier 5		
198954	260	FREEMAN	WEST COLUMBIA	77486	Non-Lead - Plastic	No	After 2014		Non-Lead - Plastic	After 2014		Non-Lead	No	No		Single Family Residence				Tier 5		
198955	264	FREEMAN	WEST COLUMBIA	77486	Non-Lead - Plastic	No	After 2014		Non-Lead - Plastic	After 2014		Non-Lead	No	No		Single Family Residence				Tier 5		
198956	268	FREEMAN	WEST COLUMBIA	77486	Non-Lead - Plastic	No	After 2014		Non-Lead - Plastic	After 2014		Non-Lead	No	No		Single Family Residence				Tier 5		
198957	276	FREEMAN	WEST COLUMBIA	77486	Non-Lead - Copper	No	Between 1989 and 2014		Non-Lead - Plastic	Between 1989 and 2014		Non-Lead	No	No		Single Family Residence				Tier 5		
198960	305	FREEMAN	WEST COLUMBIA	77486	Non-Lead - Copper	No	Before 1989		Non-Lead - Plastic	Before 1989		Non-Lead	No	No		Single Family Residence				Tier 5		
198961	309	FREEMAN	WEST COLUMBIA	77486	Non-Lead - Copper	No	Before 1989		Non-Lead - Plastic	Before 1989		Non-Lead	No	No		Single Family Residence				Tier 5		
198962	313	FREEMAN	WEST COLUMBIA	77486	Non-Lead - Copper	No	Before 1989		Non-Lead - Plastic	Before 1989		Non-Lead	No	No		Single Family Residence				Tier 5		
198965	325	FREEMAN	WEST COLUMBIA	77486	Non-Lead - Plastic	No	After 2014		Non-Lead - Plastic	After 2014		Non-Lead	No	No		Single Family Residence				Tier 5		
198966	329	FREEMAN	WEST COLUMBIA	77486	Non-Lead - Copper	No	Before 1989		Non-Lead - Plastic	Before 1989		Non-Lead	No	No		Single Family Residence				Tier 5		
198969	339	FREEMAN	WEST COLUMBIA	77486	Non-Lead - Copper	No	Before 1989		Non-Lead - Plastic	Before 1989		Non-Lead	No	No		Single Family Residence				Tier 5		
198970	341	FREEMAN	WEST COLUMBIA	77486	Non-Lead - Copper	No	Before 1989		Non-Lead - Plastic	Before 1989		Non-Lead	No	No		Single Family Residence				Tier 5		
198973	2223	SHALMAR	WEST COLUMBIA	77486	Non-Lead - Plastic	No	After 2014		Non-Lead - Plastic	After 2014		Non-Lead	No	No		Single Family Residence				Tier 5		
198975	2215	SHALMAR	WEST COLUMBIA	77486	Non-Lead - Plastic	No	After 2014		Non-Lead - Plastic	After 2014		Non-Lead	No	No		Single Family Residence				Tier 5		
198979	370	TWIN LAKES	WEST COLUMBIA	77486	Non-Lead - Copper	No	Before 1989		Non-Lead - Plastic	Before 1989		Non-Lead	No	No		Single Family Residence				Tier 5		
198980	2	ATMORE	WEST COLUMBIA	77486	Non-Lead - Copper	No	Before 1989		Non-Lead - Plastic	Before 1989		Non-Lead	No	No		Single Family Residence				Tier 5		
198983	14	ATMORE	WEST COLUMBIA	77486	Non-Lead - Copper	No	Before 1989		Non-Lead - Plastic	Before 1989		Non-Lead	No	No		Single Family Residence				Tier 5		
198984	17	ATMORE	WEST COLUMBIA	77486	Non-Lead - Copper	No	Before 1989		Non-Lead - Plastic	Before 1989		Non-Lead	No	No		Single Family Residence				Tier 5		
198985	13	ATMORE	WEST COLUMBIA	77486	Non-Lead - Copper	No	After 2014		Non-Lead - Plastic	After 2014		Non-Lead	No	No		Single Family Residence				Tier 5		
198986	9	ATMORE	WEST COLUMBIA	77486	Non-Lead - Copper	No	Before 1989		Non-Lead - Plastic	Before 1989		Non-Lead	No	No		Single Family Residence				Tier 5		
198987	5	ATMORE	WEST COLUMBIA	77486	Non-Lead - Plastic	No	After 2014		Non-Lead - Plastic	After 2014		Non-Lead	No	No		Single Family Residence				Tier 5		
198988	1	ATMORE	WEST COLUMBIA	77486	Non-Lead - Plastic	No	After 2014		Non-Lead - Plastic	After 2014		Non-Lead	No	No		Single Family Residence				Tier 5		
198989	360	TWIN LAKES	WEST COLUMBIA	77486	Non-Lead - Copper	No	After 2014		Non-Lead - Plastic	After 2014		Non-Lead	No	No		Single Family Residence				Tier 5		
198990	354	TWIN LAKES	WEST COLUMBIA	77486	Non-Lead - Copper	No	Before 1989		Non-Lead - Plastic	Before 1989		Non-Lead	No	No		Single Family Residence				Tier 5		
198991	350	TWIN LAKES	WEST COLUMBIA	77486	Non-Lead - Copper	No	Before 1989		Non-Lead - Plastic	Before 1989		Non-Lead	No	No		Single Family Residence				Tier 5		
198992	346	TWIN LAKES	WEST COLUMBIA	77486	Non-Lead - Copper	No	Before 1989		Non-Lead - Plastic	Before 1989		Non-Lead	No	No		Single Family Residence				Tier 5		
198993	342	TWIN LAKES	WEST COLUMBIA	77486	Non-Lead - Copper	No	Before 1989		Non-Lead - Plastic	Before 1989		Non-Lead	No	No		Single Family Residence				Tier 5		
198996	2278	OAK LAWN	WEST COLUMBIA	77486	Non-Lead - Plastic	No	After 2014		Non-Lead - Plastic	After 2014		Non-Lead	No	No		Single Family Residence				Tier 5		
198997	303	WOOD HAVEN	WEST COLUMBIA	77486	Non-Lead - Plastic	No	After 2014		Non-Lead - Plastic	After 2014		Non-Lead	No	No		Single Family Residence				Tier 5		
198998	311	WOODHAVEN	WEST COLUMBIA	77486	Non-Lead - Copper	No	Before 1989		Non-Lead - Plastic	Before 1989		Non-Lead	No	No		Single Family Residence				Tier 5		
198999	315	WOOD HAVEN	WEST COLUMBIA	77486	Non-Lead - Plastic	No	After 2014		Non-Lead - Plastic	After 2014		Non-Lead	No	No		Single Family Residence				Tier 5		
199000	319	WOODHAVEN	WEST COLUMBIA	77486	Non-Lead - Plastic	No	After 2014		Non-Lead - Plastic	After 2014		Non-Lead	No	No		Single Family Residence				Tier 5		
199001	202	WOOD HAVEN	WEST COLUMBIA	77486	Non-Lead - Plastic	No	After 2014		Non-Lead - Plastic	After 2014		Non-Lead	No	No		Single Family Residence				Tier 5		
199003	331	WOOD HAVEN	WEST COLUMBIA	77486	Non-Lead - Plastic	No	After 2014		Non-Lead - Plastic	After 2014		Non-Lead	No	No		Single Family Residence				Tier 5		
199004	335	WOOD HAVEN	WEST COLUMBIA	77486	Non-Lead - Plastic	No	After 2014		Non-Lead - Plastic	After 2014		Non-Lead	No	No		Single Family Residence				Tier 5		
199005	339	WOOD HAVEN	WEST COLUMBIA	77486	Non-Lead - Plastic	No	After 2014		Non-Lead - Plastic	After 2014		Non-Lead	No	No		Single Family Residence				Tier 5		
199006	343	WOOD HAVEN	WEST COLUMBIA	77486	Non-Lead - Plastic	No	After 2014		Non-Lead - Plastic	After 2014		Non-Lead	No	No		Single Family Residence				Tier 5		
199007	346	FREEMAN	WEST COLUMBIA	77486	Non-Lead - Plastic	No	After 2014		Non-Lead - Plastic	After 2014		Non-Lead	No	No		Single Family Residence				Tier 5		
199008	342	FREEMAN	WEST COLUMBIA	77486	Non-Lead - Plastic	No	After 2014		Non-Lead - Plastic	After 2014		Non-Lead	No	No		Single Family Residence				Tier 5		
199009	338	FREEMAN	WEST COLUMBIA	77486	Non-Lead - Plastic	No	After 2014		Non-Lead - Plastic	After 2014		Non-Lead	No	No		Single Family Residence				Tier 5		
199010	334	FREEMAN	WEST COLUMBIA	77486	Non-Lead - Plastic	No	After 2014		Non-Lead - Plastic	After 2014		Non-Lead	No	No		Single Family Residence				Tier 5		
199011	330	FREEMAN	WEST COLUMBIA	77486	Non-Lead - Copper	No	After 2014		Non-Lead - Plastic	After 2014		Non-Lead	No	No		Single Family Residence				Tier 5		
199012	326	FREEMAN	WEST COLUMBIA	77486	Non-Lead - Copper	No	Before 1989		Non-Lead - Plastic	Before 1989		Non-Lead	No	No		Single Family Residence				Tier 5		
199013	322	FREEMAN	WEST COLUMBIA	77486	Non-Lead - Copper	No	After 2014		Non-Lead - Plastic	After 2014		Non-Lead	No	No		Single Family Residence				Tier 5		
199014	318	FREEMAN	WEST COLUMBIA	77486	Non-Lead - Plastic	No	After 2014		Non-Lead - Plastic	After 2014		Non-Lead	No	No		Single Family Residence				Tier 5		
199015	314	FREEMAN	WEST COLUMBIA	77486	Non-Lead - Plastic	No	After 2014		Non-Lead - Plastic	After 2014		Non-Lead	No	No		Single Family Residence				Tier 5		
199016	310	FREEMAN	WEST COLUMBIA	77486	Non-Lead - Plastic	No	After 2014		Non-Lead - Plastic	After 2014		Non-Lead	No	No		Single Family Residence				Tier 5		
199017	306	FREEMAN	WEST COLUMBIA	77486	Non-Lead - Plastic	No	After 2014		Non-Lead - Plastic	After 2014		Non-Lead	No	No		Single Family Residence				Tier 5		
199018	302	FREEMAN	WEST COLUMBIA	77486	Non-Lead - Plastic	No	After 2014		Non-Lead - Plastic	After 2014		Non-Lead	No	No		Single Family Residence				Tier 5		

[illegible]

[illegible]

[illegible]

199295	337	S. AMHERST	WEST COLUMBIA	77486	Non-Lead - Copper	No	Before 1989		Non-Lead - Plastic	Before 1989		Non-Lead	No	No		Single Family Residence				Tier 5		
199297	329	S. AMHERST	WEST COLUMBIA	77486	Non-Lead - Copper	No	Between 1989 and 2014		Non-Lead - Plastic	Between 1989 and 2014		Non-Lead	No	No		Single Family Residence				Tier 5		
199298	325	S. AMHERST	WEST COLUMBIA	77486	Non-Lead - Copper	No	Before 1989		Non-Lead - Plastic	Before 1989		Non-Lead	No	No		Single Family Residence				Tier 5		
199300	317	S. AMHERST	WEST COLUMBIA	77486	Non-Lead - Plastic	No	After 2014		Non-Lead - Plastic	After 2014		Non-Lead	No	No		Single Family Residence				Tier 5		
199301	2535	RIDGEWOOD	WEST COLUMBIA	77486	Non-Lead - Plastic	No	After 2014		Non-Lead - Plastic	After 2014		Non-Lead	No	No		Single Family Residence				Tier 5		
199302	2531	RIDGEWOOD	WEST COLUMBIA	77486	Non-Lead - Plastic	No	After 2014		Non-Lead - Plastic	After 2014		Non-Lead	No	No		Single Family Residence				Tier 5		
199303	2527	RIDGEWOOD	WEST COLUMBIA	77486	Non-Lead - Plastic	No	After 2014		Non-Lead - Plastic	After 2014		Non-Lead	No	No		Single Family Residence				Tier 5		
199304	2523	RIDGEWOOD	WEST COLUMBIA	77486	Non-Lead - Plastic	No	After 2014		Non-Lead - Plastic	After 2014		Non-Lead	No	No		Single Family Residence				Tier 5		
199305	2519	RIDGEWOOD	WEST COLUMBIA	77486	Non-Lead - Plastic	No	After 2014		Non-Lead - Plastic	After 2014		Non-Lead	No	No		Single Family Residence				Tier 5		
199306	2511	RIDGEWOOD	WEST COLUMBIA	77486	Non-Lead - Copper	No	Between 1989 and 2014		Non-Lead - Plastic	Between 1989 and 2014		Non-Lead	No	No		Single Family Residence				Tier 5		
199309	2503	RIDGEWOOD	WEST COLUMBIA	77486	Non-Lead - Plastic	No	After 2014		Non-Lead - Plastic	After 2014		Non-Lead	No	No		Single Family Residence				Tier 5		
199311	2447	RIDGEWOOD DRIVE	WEST COLUMBIA	77486	Non-Lead - Plastic	No	After 2014		Non-Lead - Plastic	After 2014		Non-Lead	No	No		Single Family Residence				Tier 5		
199312	2443	RIDGEWOOD	WEST COLUMBIA	77486	Non-Lead - Plastic	No	After 2014		Non-Lead - Plastic	After 2014		Non-Lead	No	No		Single Family Residence				Tier 5		
199314	2435	RIDGEWOOD DR	WEST COLUMBIA	77486	Non-Lead - Plastic	No	After 2014		Non-Lead - Plastic	After 2014		Non-Lead	No	No		Single Family Residence				Tier 5		
199315	2431	RIDGEWOOD	WEST COLUMBIA	77486	Non-Lead - Plastic	No	After 2014		Non-Lead - Plastic	After 2014		Non-Lead	No	No		Single Family Residence				Tier 5		
199316	2427	RIDGEWOOD	WEST COLUMBIA	77486	Non-Lead - Plastic	No	After 2014		Non-Lead - Plastic	After 2014		Non-Lead	No	No		Single Family Residence				Tier 5		
199317	2423	RIDGEWOOD	WEST COLUMBIA	77486	Non-Lead - Plastic	No	After 2014		Non-Lead - Plastic	After 2014		Non-Lead	No	No		Single Family Residence				Tier 5		
199322	2403	RIDGEWOOD	WEST COLUMBIA	77486	Non-Lead - Plastic	No	After 2014		Non-Lead - Plastic	After 2014		Non-Lead	No	No		Single Family Residence				Tier 5		
199323	2363	RIDGEWOOD	WEST COLUMBIA	77486	Non-Lead - Plastic	No	After 2014		Non-Lead - Plastic	After 2014		Non-Lead	No	No		Single Family Residence				Tier 5		
199326	2351	RIDGEWOOD	WEST COLUMBIA	77486	Non-Lead - Plastic	No	After 2014		Non-Lead - Plastic	After 2014		Non-Lead	No	No		Single Family Residence				Tier 5		
199329	2339	RIDGEWOOD	WEST COLUMBIA	77486	Non-Lead - Plastic	No	After 2014		Non-Lead - Plastic	After 2014		Non-Lead	No	No		Single Family Residence				Tier 5		
199330	2335	RIDGEWOOD	WEST COLUMBIA	77486	Non-Lead - Copper	No	After 2014		Non-Lead - Plastic	After 2014		Non-Lead	No	No		Single Family Residence				Tier 5		
199333	2323	RIDGEWOOD	WEST COLUMBIA	77486	Non-Lead - Plastic	No	After 2014		Non-Lead - Plastic	After 2014		Non-Lead	No	No		Single Family Residence				Tier 5		
199337	2307	RIDGEWOOD	WEST COLUMBIA	77486	Non-Lead - Copper	No	Before 1989		Non-Lead - Plastic	Before 1989		Non-Lead	No	No		Single Family Residence				Tier 5		
199338	2303	RIDGEWOOD	WEST COLUMBIA	77486	Non-Lead - Copper	No	After 2014		Non-Lead - Plastic	After 2014		Non-Lead	No	No		Single Family Residence				Tier 5		
199340	2269	RIDGEWOOD	WEST COLUMBIA	77486	Non-Lead - Copper	No	Before 1989		Non-Lead - Plastic	Before 1989		Non-Lead	No	No		Single Family Residence				Tier 5		
199341	2265	RIDGEWOOD	WEST COLUMBIA	77486	Non-Lead - Copper	No	Before 1989		Non-Lead - Plastic	Before 1989		Non-Lead	No	No		Single Family Residence				Tier 5		
199343	2257	RIDGEWOOD	WEST COLUMBIA	77486	Non-Lead - Copper	No	Between 1989 and 2014		Non-Lead - Plastic	Between 1989 and 2014		Non-Lead	No	No		Single Family Residence				Tier 5		
199345	2249	RIDGEWOOD	WEST COLUMBIA	77486	Non-Lead - Copper	No	After 2014		Non-Lead - Plastic	After 2014		Non-Lead	No	No		Single Family Residence				Tier 5		
199347	2241	RIDGEWOOD	WEST COLUMBIA	77486	Non-Lead - Plastic	No	After 2014		Non-Lead - Plastic	After 2014		Non-Lead	No	No		Single Family Residence				Tier 5		
199351	2550	RIDGEWOOD DR	WEST COLUMBIA	77486	Non-Lead - Plastic	No	After 2014		Non-Lead - Plastic	After 2014		Non-Lead	No	No		Single Family Residence				Tier 5		
199352	2546	RIDGEWOOD	WEST COLUMBIA	77486	Non-Lead - Plastic	No	After 2014		Non-Lead - Plastic	After 2014		Non-Lead	No	No		Single Family Residence				Tier 5		
199353	2542	RIDGEWOOD	WEST COLUMBIA	77486	Non-Lead - Plastic	No	After 2014		Non-Lead - Plastic	After 2014		Non-Lead	No	No		Single Family Residence				Tier 5		
199354	2538	RIDGEWOOD	WEST COLUMBIA	77486	Non-Lead - Plastic	No	After 2014		Non-Lead - Plastic	After 2014		Non-Lead	No	No		Single Family Residence				Tier 5		
199355	2534	RIDGEWOOD	WEST COLUMBIA	77486	Non-Lead - Plastic	No	After 2014		Non-Lead - Plastic	After 2014		Non-Lead	No	No		Single Family Residence				Tier 5		
199356	2530	RIDGEWOOD	WEST COLUMBIA	77486	Non-Lead - Plastic	No	After 2014		Non-Lead - Plastic	After 2014		Non-Lead	No	No		Single Family Residence				Tier 5		
199357	2526	RIDGEWOOD	WEST COLUMBIA	77486	Non-Lead - Plastic	No	After 2014		Non-Lead - Plastic	After 2014		Non-Lead	No	No		Single Family Residence				Tier 5		
199359	2518	RIDGEWOOD	WEST COLUMBIA	77486	Non-Lead - Plastic	No	After 2014		Non-Lead - Plastic	After 2014		Non-Lead	No	No		Single Family Residence				Tier 5		
199360	2514	RIDGEWOOD	WEST COLUMBIA	77486	Non-Lead - Plastic	No	After 2014		Non-Lead - Plastic	After 2014		Non-Lead	No	No		Single Family Residence				Tier 5		
199362	2506	RIDGEWOOD	WEST COLUMBIA	77486	Non-Lead - Plastic	No	After 2014		Non-Lead - Plastic	After 2014		Non-Lead	No	No		Single Family Residence				Tier 5		
199363	2502	RIDGEWOOD	WEST COLUMBIA	77486	Non-Lead - Plastic	No	After 2014		Non-Lead - Plastic	After 2014		Non-Lead	No	No		Single Family Residence				Tier 5		
199368	2555	TURBERRY	WEST COLUMBIA	77486	Non-Lead - Plastic	No	After 2014		Non-Lead - Plastic	After 2014		Non-Lead	No	No		Single Family Residence				Tier 5		
199369	2551	TURBERRY	WEST COLUMBIA	77486	Non-Lead - Plastic	No	After 2014		Non-Lead - Plastic	After 2014		Non-Lead	No	No		Single Family Residence				Tier 5		
199370	2547	TURBERRY	WEST COLUMBIA	77486	Non-Lead - Plastic	No	After 2014		Non-Lead - Plastic	After 2014		Non-Lead	No	No		Single Family Residence				Tier 5		
199371	2543	TURBERRY	WEST COLUMBIA	77486	Non-Lead - Plastic	No	After 2014		Non-Lead - Plastic	After 2014		Non-Lead	No	No		Single Family Residence				Tier 5		
199372	2539	TURBERRY	WEST COLUMBIA	77486	Non-Lead - Plastic	No	After 2014		Non-Lead - Plastic	After 2014		Non-Lead	No	No		Single Family Residence				Tier 5		
199373	2535	TURBERRY	WEST COLUMBIA	77486	Non-Lead - Plastic	No	After 2014		Non-Lead - Plastic	After 2014		Non-Lead	No	No		Single Family Residence				Tier 5		
199374	2531	TURBERRY	WEST COLUMBIA	77486	Non-Lead - Plastic	No	After 2014		Non-Lead - Plastic	After 2014		Non-Lead	No	No		Single Family Residence				Tier 5		
199376	2523	TURBERRY	WEST COLUMBIA	77486	Non-Lead - Plastic	No	After 2014		Non-Lead - Plastic	After 2014		Non-Lead	No	No		Single Family Residence				Tier 5		
199377	2519	TURBERRY	WEST COLUMBIA	77486	Non-Lead - Plastic	No	After 2014		Non-Lead - Plastic	After 2014		Non-Lead	No	No		Single Family Residence				Tier 5		
199378	2515	TURBERRY	WEST COLUMBIA	77486	Non-Lead - Copper	No	Between 1989 and 2014		Non-Lead - Plastic	Between 1989 and 2014		Non-Lead	No	No		Single Family Residence				Tier 5		
199380	2507	TURBERRY	WEST COLUMBIA	77486	Non-Lead - Plastic	No	After 2014		Non-Lead - Plastic	After 2014		Non-Lead	No	No		Single Family Residence				Tier 5		
199382	2423	TURBERRY	WEST COLUMBIA	77486	Non-Lead - Plastic	No	After 2014		Non-Lead - Plastic	After 2014		Non-Lead	No	No		Single Family Residence				Tier 5		
199383	2419	TURBERRY	WEST COLUMBIA	77486	Non-Lead - Plastic	No	After 2014		Non-Lead - Plastic	After 2014		Non-Lead	No	No		Single Family Residence				Tier 5		
199384	2415	TURBERRY	WEST COLUMBIA	77486	Non-Lead - Plastic	No	After 2014		Non-Lead - Plastic	After 2014		Non-Lead	No	No		Single Family Residence				Tier 5		
199385	2411	TURBERRY DR	WEST COLUMBIA	77486	Non-Lead - Plastic	No	After 2014		Non-Lead - Plastic	After 2014		Non-Lead	No	No		Single Family Residence				Tier 5		
199387	2403	TURBERRY	WEST COLUMBIA	77486	Non-Lead - Copper	No	Before 1989		Non-Lead - Plastic	Before 1989		Non-Lead	No	No		Single Family Residence				Tier 5		
199388	2402	TURBERRY	WEST COLUMBIA	77486	Non-Lead - Copper	No	Between 1989 and 2014		Non-Lead - Plastic	Between 1989 and 2014		Non-Lead	No	No		Single Family Residence				Tier 5		
199391	2414	TURBERRY	WEST COLUMBIA	77486	Non-Lead - Copper	No	Between 1989 and 2014		Non-Lead - Plastic	Between 1989 and 2014		Non-Lead	No	No		Single Family Residence				Tier 5		
199393	2422	TURBERRY	WEST COLUMBIA	77486	Non-Lead - Copper	No	Between 1989 and 2014		Non-Lead - Plastic	Between 1989 and 2014		Non-Lead	No	No		Single Family Residence				Tier 5		
199396	401	VALLE VERDE	WEST COLUMBIA	77486	Non-Lead - Copper	No	Between 1989 and 2014		Non-Lead - Plastic	Between 1989 and 2014		Non-Lead	No	No		Single Family Residence				Tier 5		
199398	409	VALLE VERDE	WEST COLUMBIA	77486	Non-Lead - Plastic	No	After 2014		Non-Lead - Plastic	After 2014		Non-Lead	No	No		Single Family Residence				Tier 5		

199400	417	VALLE VERDE	WEST COLUMBIA	77486	Non-Lead - Copper	No	Before 1989		Non-Lead - Plastic	Before 1989		Non-Lead	No	No		Single Family Residence				Tier 5		
199402	414	VALLE VERDE	WEST COLUMBIA	77486	Non-Lead - Plastic	No	After 2014		Non-Lead - Plastic	After 2014		Non-Lead	No	No		Single Family Residence				Tier 5		
199402	414	VALLE VERDE	WEST COLUMBIA	77486	Non-Lead - Plastic	No	After 2014		Non-Lead - Plastic	After 2014		Non-Lead	No	No		Single Family Residence				Tier 5		
199403	410	VALLE VERDE	WEST COLUMBIA	77486	Non-Lead - Copper	No	After 2014		Non-Lead - Plastic	After 2014		Non-Lead	No	No		Single Family Residence				Tier 5		
199404	406	VALLE VERDE	WEST COLUMBIA	77486	Non-Lead - Copper	No	Before 1989		Non-Lead - Plastic	Before 1989		Non-Lead	No	No		Single Family Residence				Tier 5		
199405	402	VALLE VERDE	WEST COLUMBIA	77486	Non-Lead - Copper	No	After 2014		Non-Lead - Plastic	After 2014		Non-Lead	No	No		Single Family Residence				Tier 5		
199406	403	BUENA VISTA	WEST COLUMBIA	77486	Non-Lead - Copper	No	Before 1989		Non-Lead - Plastic	Before 1989		Non-Lead	No	No		Single Family Residence				Tier 5		
199407	407	BUENA VISTA	WEST COLUMBIA	77486	Non-Lead - Copper	No	After 2014		Non-Lead - Plastic	After 2014		Non-Lead	No	No		Single Family Residence				Tier 5		
199410	419	BUENA VISTA	WEST COLUMBIA	77486	Non-Lead - Plastic	No	After 2014		Non-Lead - Plastic	After 2014		Non-Lead	No	No		Single Family Residence				Tier 5		
199411	423	BUENA VISTA	WEST COLUMBIA	77486	Non-Lead - Copper	No	Between 1989 and 2014		Non-Lead - Plastic	Between 1989 and 2014		Non-Lead	No	No		Single Family Residence				Tier 5		
199412	424	BUENA VISTA	WEST COLUMBIA	77486	Non-Lead - Plastic	No	After 2014		Non-Lead - Plastic	After 2014		Non-Lead	No	No		Single Family Residence				Tier 5		
199413	420	BUENA VISTA LANE	WEST COLUMBIA	77486	Non-Lead - Plastic	No	After 2014		Non-Lead - Plastic	After 2014		Non-Lead	No	No		Single Family Residence				Tier 5		
199417	404	BUENA VISTA	WEST COLUMBIA	77486	Non-Lead - Copper	No	Before 1989		Non-Lead - Plastic	Before 1989		Non-Lead	No	No		Single Family Residence				Tier 5		
199418	400	BUENA VISTA	WEST COLUMBIA	77486	Non-Lead - Copper	No	Before 1989		Non-Lead - Plastic	Before 1989		Non-Lead	No	No		Single Family Residence				Tier 5		
199418	400	BUENA VISTA	WEST COLUMBIA	77486	Non-Lead - Copper	No	After 2014		Non-Lead - Plastic	After 2014		Non-Lead	No	No		Single Family Residence				Tier 5		
199420	405	BURNING TREE	WEST COLUMBIA	77486	Non-Lead - Plastic	No	After 2014		Non-Lead - Plastic	After 2014		Non-Lead	No	No		Single Family Residence				Tier 5		
199421	411	BURNING TREE	WEST COLUMBIA	77486	Non-Lead - Plastic	No	After 2014		Non-Lead - Plastic	After 2014		Non-Lead	No	No		Single Family Residence				Tier 5		
199422	413	BURNING TREE	WEST COLUMBIA	77486	Non-Lead - Plastic	No	After 2014		Non-Lead - Plastic	After 2014		Non-Lead	No	No		Single Family Residence				Tier 5		
199423	417	BURNING TREE	WEST COLUMBIA	77486	Non-Lead - Plastic	No	After 2014		Non-Lead - Plastic	After 2014		Non-Lead	No	No		Single Family Residence				Tier 5		
199424	421	BURNING TREE	WEST COLUMBIA	77486	Non-Lead - Plastic	No	After 2014		Non-Lead - Plastic	After 2014		Non-Lead	No	No		Single Family Residence				Tier 5		
199426	429	BURNING TREE	WEST COLUMBIA	77486	Non-Lead - Plastic	No	After 2014		Non-Lead - Plastic	After 2014		Non-Lead	No	No		Single Family Residence				Tier 5		
199427	434	BURNING TREE	WEST COLUMBIA	77486	Non-Lead - Copper	No	Before 1989		Non-Lead - Plastic	Before 1989		Non-Lead	No	No		Single Family Residence				Tier 5		
199428	430	BURNING TREE	WEST COLUMBIA	77486	Non-Lead - Plastic	No	Between 1989 and 2014		Non-Lead - Plastic	Between 1989 and 2014		Non-Lead	No	No		Single Family Residence				Tier 5		
199429	426	BURNING TREE	WEST COLUMBIA	77486	Non-Lead - Plastic	No	After 2014		Non-Lead - Plastic	After 2014		Non-Lead	No	No		Single Family Residence				Tier 5		
199430	422	BURNING TREE	WEST COLUMBIA	77486	Non-Lead - Plastic	No	After 2014		Non-Lead - Plastic	After 2014		Non-Lead	No	No		Single Family Residence				Tier 5		
199431	418	BURNING TREE	WEST COLUMBIA	77486	Non-Lead - Plastic	No	After 2014		Non-Lead - Plastic	After 2014		Non-Lead	No	No		Single Family Residence				Tier 5		
199432	414	BURNING TREE	WEST COLUMBIA	77486	Non-Lead - Plastic	No	After 2014		Non-Lead - Plastic	After 2014		Non-Lead	No	No		Single Family Residence				Tier 5		
199433	410	BURNING TREE	WEST COLUMBIA	77486	Non-Lead - Plastic	No	After 2014		Non-Lead - Plastic	After 2014		Non-Lead	No	No		Single Family Residence				Tier 5		
199434	406	BURNING TREE	WEST COLUMBIA	77486	Non-Lead - Plastic	No	After 2014		Non-Lead - Plastic	After 2014		Non-Lead	No	No		Single Family Residence				Tier 5		
199435	402	BURNING TREE	WEST COLUMBIA	77486	Non-Lead - Copper	No	Before 1989		Non-Lead - Plastic	Before 1989		Non-Lead	No	No		Single Family Residence				Tier 5		
199436	403	GREEN MEADOWS	WEST COLUMBIA	77486	Non-Lead - Plastic	No	After 2014		Non-Lead - Plastic	After 2014		Non-Lead	No	No		Single Family Residence				Tier 5		
199437	407	GREEN MEADOWS	WEST COLUMBIA	77486	Non-Lead - Plastic	No	After 2014		Non-Lead - Plastic	After 2014		Non-Lead	No	No		Single Family Residence				Tier 5		
199438	411	GREEN MEADOWS	WEST COLUMBIA	77486	Non-Lead - Plastic	No	After 2014		Non-Lead - Plastic	After 2014		Non-Lead	No	No		Single Family Residence				Tier 5		
199439	415	GREEN MEADOWS	WEST COLUMBIA	77486	Non-Lead - Plastic	No	After 2014		Non-Lead - Plastic	After 2014		Non-Lead	No	No		Single Family Residence				Tier 5		
199440	419	GREEN MEADOWS	WEST COLUMBIA	77486	Non-Lead - Plastic	No	After 2014		Non-Lead - Plastic	After 2014		Non-Lead	No	No		Single Family Residence				Tier 5		
199441	423	GREEN MEADOWS	WEST COLUMBIA	77486	Non-Lead - Plastic	No	After 2014		Non-Lead - Plastic	After 2014		Non-Lead	No	No		Single Family Residence				Tier 5		
199442	427	GREEN MEADOWS	WEST COLUMBIA	77486	Non-Lead - Plastic	No	After 2014		Non-Lead - Plastic	After 2014		Non-Lead	No	No		Single Family Residence				Tier 5		
199443	431	GREEN MEADOWS	WEST COLUMBIA	77486	Non-Lead - Plastic	No	After 2014		Non-Lead - Plastic	After 2014		Non-Lead	No	No		Single Family Residence				Tier 5		
199444	435	GREEN MEADOWS	WEST COLUMBIA	77486	Non-Lead - Plastic	No	After 2014		Non-Lead - Plastic	After 2014		Non-Lead	No	No		Single Family Residence				Tier 5		
199445	439	GREEN MEADOWS	WEST COLUMBIA	77486	Non-Lead - Plastic	No	After 2014		Non-Lead - Plastic	After 2014		Non-Lead	No	No		Single Family Residence				Tier 5		
199447	447	GREEN MEADOWS	WEST COLUMBIA	77486	Non-Lead - Plastic	No	After 2014		Non-Lead - Plastic	After 2014		Non-Lead	No	No		Single Family Residence				Tier 5		
199448	451	GREEN MEADOWS	WEST COLUMBIA	77486	Non-Lead - Plastic	No	After 2014		Non-Lead - Plastic	After 2014		Non-Lead	No	No		Single Family Residence				Tier 5		
199449	455	GREEN MEADOWS	WEST COLUMBIA	77486	Non-Lead - Plastic	No	After 2014		Non-Lead - Plastic	After 2014		Non-Lead	No	No		Single Family Residence				Tier 5		
199450	459	GREEN MEADOWS	WEST COLUMBIA	77486	Non-Lead - Plastic	No	After 2014		Non-Lead - Plastic	After 2014		Non-Lead	No	No		Single Family Residence				Tier 5		
199451	501	GREEN MEADOWS	WEST COLUMBIA	77486	Non-Lead - Plastic	No	After 2014		Non-Lead - Plastic	After 2014		Non-Lead	No	No		Single Family Residence				Tier 5		
199454	509	GREEN MEADOWS	WEST COLUMBIA	77486	Non-Lead - Plastic	No	After 2014		Non-Lead - Plastic	After 2014		Non-Lead	No	No		Single Family Residence				Tier 5		
199456	521	GREEN MEADOWS	WEST COLUMBIA	77486	Non-Lead - Plastic	No	After 2014		Non-Lead - Plastic	After 2014		Non-Lead	No	No		Single Family Residence				Tier 5		
199457	525	GREEN MEADOWS	WEST COLUMBIA	77486	Non-Lead - Plastic	No	After 2014		Non-Lead - Plastic	After 2014		Non-Lead	No	No		Single Family Residence				Tier 5		
199458	529	GREEN MEADOWS	WEST COLUMBIA	77486	Non-Lead - Plastic	No	After 2014		Non-Lead - Plastic	After 2014		Non-Lead	No	No		Single Family Residence				Tier 5		
199459	533	GREEN MEADOWS	WEST COLUMBIA	77486	Non-Lead - Plastic	No	After 2014		Non-Lead - Plastic	After 2014		Non-Lead	No	No		Single Family Residence				Tier 5		
199460	537	GREEN MEADOWS	WEST COLUMBIA	77486	Non-Lead - Plastic	No	After 2014		Non-Lead - Plastic	After 2014		Non-Lead	No	No		Single Family Residence				Tier 5		
199461	541	GREEN MEADOWS	WEST COLUMBIA	77486	Non-Lead - Plastic	No	After 2014		Non-Lead - Plastic	After 2014		Non-Lead	No	No		Single Family Residence				Tier 5		
199462	545	GREEN MEADOWS	WEST COLUMBIA	77486	Non-Lead - Plastic	No	After 2014		Non-Lead - Plastic	After 2014		Non-Lead	No	No		Single Family Residence				Tier 5		
199463	549	GREEN MEADOWS	WEST COLUMBIA	77486	Non-Lead - Plastic	No	After 2014		Non-Lead - Plastic	After 2014		Non-Lead	No	No		Single Family Residence				Tier 5		
199464	553	GREEN MEADOWS	WEST COLUMBIA	77486	Non-Lead - Plastic	No	After 2014		Non-Lead - Plastic	After 2014		Non-Lead	No	No		Single Family Residence				Tier 5		
199467	562	GREEN MEADOWS	WEST COLUMBIA	77486	Non-Lead - Plastic	No	After 2014		Non-Lead - Plastic	After 2014		Non-Lead	No	No		Single Family Residence				Tier 5		
199468	558	GREEN MEADOWS	WEST COLUMBIA	77486	Non-Lead - Plastic	No	After 2014		Non-Lead - Plastic	After 2014		Non-Lead	No	No		Single Family Residence				Tier 5		
199469	554	GREEN MEADOWS	WEST COLUMBIA	77486	Non-Lead - Plastic	No	After 2014		Non-Lead - Plastic	After 2014		Non-Lead	No	No		Single Family Residence				Tier 5		
199471	546	GREEN MEADOWS	WEST COLUMBIA	77486	Non-Lead - Plastic	No	After 2014		Non-Lead - Plastic	After 2014		Non-Lead	No	No		Single Family Residence				Tier 5		
199473	538	GREEN MEADOWS	WEST COLUMBIA	77486	Non-Lead - Plastic	No	After 2014		Non-Lead - Plastic	After 2014		Non-Lead	No	No		Single Family Residence				Tier 5		
199474	534	GREEN MEADOWS	WEST COLUMBIA	77486	Non-Lead - Plastic	No	After 2014		Non-Lead - Plastic	After 2014		Non-Lead	No	No		Single Family Residence				Tier 5		
199475	530	GREEN MEADOWS	WEST COLUMBIA	77486	Non-Lead - Plastic	No	After 2014		Non-Lead - Plastic	After 2014		Non-Lead	No	No		Single Family Residence				Tier 5		

[illegible]

199559	273	N. AMHERST	WEST COLUMBIA	77486	Non-Lead - Copper	No	Before 1989		Non-Lead - Plastic	Before 1989		Non-Lead	No	No		Single Family Residence				Tier 5		
199561	261	N. AMHERST	WEST COLUMBIA	77486	Non-Lead - Copper	No	Before 1989		Non-Lead - Plastic	Before 1989		Non-Lead	No	No		Single Family Residence				Tier 5		
199563	253	N. AMHERST	WEST COLUMBIA	77486	Non-Lead - Copper	No	Before 1989		Non-Lead - Plastic	Before 1989		Non-Lead	No	No		Single Family Residence				Tier 5		
199564	249	N. AMHERST	WEST COLUMBIA	77486	Non-Lead - Copper	No	Before 1989		Non-Lead - Plastic	Before 1989		Non-Lead	No	No		Single Family Residence				Tier 5		
199565	245	N. AMHERST	WEST COLUMBIA	77486	Non-Lead - Copper	No	Before 1989		Non-Lead - Plastic	Before 1989		Non-Lead	No	No		Single Family Residence				Tier 5		
199566	237	N. AMHERST	WEST COLUMBIA	77486	Non-Lead - Copper	No	Before 1989		Non-Lead - Plastic	Before 1989		Non-Lead	No	No		Single Family Residence				Tier 5		
199568	229	N. AMHERST	WEST COLUMBIA	77486	Non-Lead - Copper	No	Before 1989		Non-Lead - Plastic	Before 1989		Non-Lead	No	No		Single Family Residence				Tier 5		
199569	225	N. AMHERST	WEST COLUMBIA	77486	Non-Lead - Copper	No	Before 1989		Non-Lead - Plastic	Before 1989		Non-Lead	No	No		Single Family Residence				Tier 5		
199570	221	N. AMHERST	WEST COLUMBIA	77486	Non-Lead - Copper	No	Before 1989		Non-Lead - Plastic	Before 1989		Non-Lead	No	No		Single Family Residence				Tier 5		
199571	217	N. AMHERST	WEST COLUMBIA	77486	Non-Lead - Plastic	No	After 2014		Non-Lead - Plastic	After 2014		Non-Lead	No	No		Single Family Residence				Tier 5		
199572	213	N. AMHERST	WEST COLUMBIA	77486	Non-Lead - Plastic	No	After 2014		Non-Lead - Plastic	After 2014		Non-Lead	No	No		Single Family Residence				Tier 5		
199573	209	N. AMHERST	WEST COLUMBIA	77486	Non-Lead - Copper	No	Before 1989		Non-Lead - Plastic	Before 1989		Non-Lead	No	No		Single Family Residence				Tier 5		
199574	205	N. AMHERST	WEST COLUMBIA	77486	Non-Lead - Plastic	No	After 2014		Non-Lead - Plastic	After 2014		Non-Lead	No	No		Single Family Residence				Tier 5		
199575	201	N. AMHERST	WEST COLUMBIA	77486	Non-Lead - Plastic	No	After 2014		Non-Lead - Plastic	After 2014		Non-Lead	No	No		Single Family Residence				Tier 5		
199576	315	N. AMHERST	WEST COLUMBIA	77486	Non-Lead - Copper	No	Before 1989		Non-Lead - Plastic	Before 1989		Non-Lead	No	No		Single Family Residence				Tier 5		
199577	311	N. AMHERST	WEST COLUMBIA	77486	Non-Lead - Copper	No	After 2014		Non-Lead - Plastic	After 2014		Non-Lead	No	No		Single Family Residence				Tier 5		
199578	307	N. AMHERST	WEST COLUMBIA	77486	Non-Lead - Copper	No	Before 1989		Non-Lead - Plastic	Before 1989		Non-Lead	No	No		Single Family Residence				Tier 5		
199579	303	N. AMHERST	WEST COLUMBIA	77486	Non-Lead - Copper	No	Between 1989 and 2014		Non-Lead - Plastic	Between 1989 and 2014		Non-Lead	No	No		Single Family Residence				Tier 5		
199580	330	WELLSHIRE	WEST COLUMBIA	77486	Non-Lead - Plastic	No	After 2014		Non-Lead - Plastic	After 2014		Non-Lead	No	No		Single Family Residence				Tier 5		
199581	326	WELLSHIRE	WEST COLUMBIA	77486	Non-Lead - Plastic	No	After 2014		Non-Lead - Plastic	After 2014		Non-Lead	No	No		Single Family Residence				Tier 5		
199582	322	WELLSHIRE	WEST COLUMBIA	77486	Non-Lead - Copper	No	After 2014		Non-Lead - Plastic	After 2014		Non-Lead	No	No		Single Family Residence				Tier 5		
199583	318	WELLSHIRE	WEST COLUMBIA	77486	Non-Lead - Copper	No	Before 1989		Non-Lead - Plastic	Before 1989		Non-Lead	No	No		Single Family Residence				Tier 5		
199585	310	WELLSHIRE	WEST COLUMBIA	77486	Non-Lead - Copper	No	Between 1989 and 2014		Non-Lead - Plastic	Between 1989 and 2014		Non-Lead	No	No		Single Family Residence				Tier 5		
199587	302	WELLSHIRE	WEST COLUMBIA	77486	Non-Lead - Copper	No	Before 1989		Non-Lead - Plastic	Before 1989		Non-Lead	No	No		Single Family Residence				Tier 5		
199588	270	CRESTVIEW	WEST COLUMBIA	77486	Non-Lead - Copper	No	Before 1989		Non-Lead - Plastic	Before 1989		Non-Lead	No	No		Single Family Residence				Tier 5		
199589	2	TIMBER	WEST COLUMBIA	77486	Non-Lead - Copper	No	Between 1989 and 2014		Non-Lead - Plastic	Between 1989 and 2014		Non-Lead	No	No		Single Family Residence				Tier 5		
199592	7	TIMBER	WEST COLUMBIA	77486	Non-Lead - Plastic	No	After 2014		Non-Lead - Plastic	After 2014		Non-Lead	No	No		Single Family Residence				Tier 5		
199593	5	TIMBER	WEST COLUMBIA	77486	Non-Lead - Plastic	No	After 2014		Non-Lead - Plastic	After 2014		Non-Lead	No	No		Single Family Residence				Tier 5		
199594	1	TIMBER	WEST COLUMBIA	77486	Non-Lead - Copper	No	Before 1989		Non-Lead - Plastic	Before 1989		Non-Lead	No	No		Single Family Residence				Tier 5		
199595	4	PRESTON	WEST COLUMBIA	77486	Non-Lead - Copper	No	After 2014		Non-Lead - Plastic	After 2014		Non-Lead	No	No		Single Family Residence				Tier 5		
199596	8	PRESTON	WEST COLUMBIA	77486	Non-Lead - Copper	No	Before 1989		Non-Lead - Plastic	Before 1989		Non-Lead	No	No		Single Family Residence				Tier 5		
199598	11	PRESTON	WEST COLUMBIA	77486	Non-Lead - Copper	No	Before 1989		Non-Lead - Plastic	Before 1989		Non-Lead	No	No		Single Family Residence				Tier 5		
199600	1	PRESTON	WEST COLUMBIA	77486	Non-Lead - Copper	No	Before 1989		Non-Lead - Plastic	Before 1989		Non-Lead	No	No		Single Family Residence				Tier 5		
199601	2	TROY	WEST COLUMBIA	77486	Non-Lead - Copper	No	After 2014		Non-Lead - Plastic	After 2014		Non-Lead	No	No		Single Family Residence				Tier 5		
199603	10	TROY	WEST COLUMBIA	77486	Non-Lead - Copper	No	Between 1989 and 2014		Non-Lead - Plastic	Between 1989 and 2014		Non-Lead	No	No		Single Family Residence				Tier 5		
199604	5	TROY	WEST COLUMBIA	77486	Non-Lead - Copper	No	After 2014		Non-Lead - Plastic	After 2014		Non-Lead	No	No		Single Family Residence				Tier 5		
199606	1	TROY	WEST COLUMBIA	77486	Non-Lead - Copper	No	Before 1989		Non-Lead - Plastic	Before 1989		Non-Lead	No	No		Single Family Residence				Tier 5		
199607	4	ST ANDREWS	WEST COLUMBIA	77486	Non-Lead - Copper	No	Before 1989		Non-Lead - Plastic	Before 1989		Non-Lead	No	No		Single Family Residence				Tier 5		
199609	11	ST ANDREWS	WEST COLUMBIA	77486	Non-Lead - Copper	No	After 2014		Non-Lead - Plastic	After 2014		Non-Lead	No	No		Single Family Residence				Tier 5		
199610	3	ST ANDREWS	WEST COLUMBIA	77486	Non-Lead - Copper	No	Between 1989 and 2014		Non-Lead - Plastic	Between 1989 and 2014		Non-Lead	No	No		Single Family Residence				Tier 5		
199614	220	CRESTVIEW	WEST COLUMBIA	77486	Non-Lead - Copper	No	Before 1989		Non-Lead - Plastic	Before 1989		Non-Lead	No	No		Single Family Residence				Tier 5		
199615	2	OLYMPIA	WEST COLUMBIA	77486	Non-Lead - Copper	No	Between 1989 and 2014		Non-Lead - Plastic	Between 1989 and 2014		Non-Lead	No	No		Single Family Residence				Tier 5		
199617	10	OLYMPIA	WEST COLUMBIA	77486	Non-Lead - Copper	No	Between 1989 and 2014		Non-Lead - Plastic	Between 1989 and 2014		Non-Lead	No	No		Single Family Residence				Tier 5		
199619	2524	OLYMPIA	WEST COLUMBIA	77486	Non-Lead - Plastic	No	After 2014		Non-Lead - Plastic	After 2014		Non-Lead	No	No		Single Family Residence				Tier 5		
199622	2532	OLYMPIA	WEST COLUMBIA	77486	Non-Lead - Copper	No	Before 1989		Non-Lead - Plastic	Before 1989		Non-Lead	No	No		Single Family Residence				Tier 5		
199623	2536	OLYMPIA	WEST COLUMBIA	77486	Non-Lead - Copper	No	After 2014		Non-Lead - Plastic	After 2014		Non-Lead	No	No		Single Family Residence				Tier 5		
199624	2544	OLYMPIA	WEST COLUMBIA	77486	Non-Lead - Copper	No	Between 1989 and 2014		Non-Lead - Plastic	Between 1989 and 2014		Non-Lead	No	No		Single Family Residence				Tier 5		
199626	2546	OLYMPIA	WEST COLUMBIA	77486	Non-Lead - Plastic	No	After 2014		Non-Lead - Plastic	After 2014		Non-Lead	No	No		Single Family Residence				Tier 5		
199627	2548	OLYMPIA	WEST COLUMBIA	77486	Non-Lead - Copper	No	Between 1989 and 2014		Non-Lead - Plastic	Between 1989 and 2014		Non-Lead	No	No		Single Family Residence				Tier 5		
199629	2560	OLYMPIA	WEST COLUMBIA	77486	Non-Lead - Plastic	No	After 2014		Non-Lead - Plastic	After 2014		Non-Lead	No	No		Single Family Residence				Tier 5		
199630	2564	OLYMPIA	WEST COLUMBIA	77486	Non-Lead - Plastic	No	After 2014		Non-Lead - Plastic	After 2014		Non-Lead	No	No		Single Family Residence				Tier 5		
199631	2568	OLYMPIA	WEST COLUMBIA	77486	Non-Lead - Copper	No	Between 1989 and 2014		Non-Lead - Plastic	Between 1989 and 2014		Non-Lead	No	No		Single Family Residence				Tier 5		
199633	2576	OLYMPIA	WEST COLUMBIA	77486	Non-Lead - Copper	No	After 2014		Non-Lead - Plastic	After 2014		Non-Lead	No	No		Single Family Residence				Tier 5		
199634	2580	OLYMPIA	WEST COLUMBIA	77486	Non-Lead - Copper	No	After 2014		Non-Lead - Plastic	After 2014		Non-Lead	No	No		Single Family Residence				Tier 5		
199635	2584	OLYMPIA	WEST COLUMBIA	77486	Non-Lead - Copper	No	Before 1989		Non-Lead - Plastic	Before 1989		Non-Lead	No	No		Single Family Residence				Tier 5		
199640	2529	OLYMPIA	WEST COLUMBIA	77486	Non-Lead - Copper	No	After 2014		Non-Lead - Plastic	After 2014		Non-Lead	No	No		Single Family Residence				Tier 5		
199642	2525	OLYMPIA	WEST COLUMBIA	77486	Non-Lead - Copper	No	Between 1989 and 2014		Non-Lead - Plastic	Between 1989 and 2014		Non-Lead	No	No		Single Family Residence				Tier 5		
199643	2521	OLYMPIA	WEST COLUMBIA	77486	Non-Lead - Copper	No	After 2014		Non-Lead - Plastic	After 2014		Non-Lead	No	No		Single Family Residence				Tier 5		
199645	2513	OLYMPIA	WEST COLUMBIA	77486	Non-Lead - Copper	No	After 2014		Non-Lead - Plastic	After 2014		Non-Lead	No	No		Single Family Residence				Tier 5		
199646	2505	OLYMPIA	WEST COLUMBIA	77486	Non-Lead - Copper	No	Between 1989 and 2014		Non-Lead - Plastic	Between 1989 and 2014		Non-Lead	No	No		Single Family Residence				Tier 5		
199648	200	MOSSY MEADOW	WEST COLUMBIA	77486	Non-Lead - Copper	No	Before 1989		Non-Lead - Plastic	Before 1989		Non-Lead	No	No		Single Family Residence				Tier 5		
199649	204	MOSSY MEADOW	WEST COLUMBIA	77486	Non-Lead - Copper	No	Before 1989		Non-Lead - Plastic	Before 1989		Non-Lead	No	No		Single Family Residence				Tier 5		

[illegible]

[illegible]

[illegible]

[illegible]









































































































































PWS Certification

PWS Name: Varner Creek Utility District

PWSID: 200070

Certify completion of your lead service line inventory by checking the appropriate boxes below, entering your water system information, and signing the certification. All information on this page is required.

<i>I certify</i>	I certify under penalty of law that this document and all attachments were prepared under my direction or supervision in accordance with a system designed to assure that qualified personnel properly gather and evaluate the information submitted. Based on my inquiry of the person or persons who manage the system, or those persons directly responsible for gathering the information, the information submitted is, to the best of my knowledge and belief, true, accurate, and complete. I am aware that there are significant penalties for submitting false information, including the possibility of fines and imprisonment for knowing violations.
<i>I certify</i>	As the PWS Representative, I understand that if any additional service lines are subsequently identified as Lead, Galvanized Requiring Replacement, or Lead Status Unknown, the PWS is required to notify the State within 30 days of identifying the service line(s) and must prepare an updated inventory using <u>Lead Service Line Inventory</u> .
<i>I certify</i>	As the PWS Representative, I understand that the PWS should maintain for review any resource, information, or identification method used for the development of this initial inventory. These records do not need to be submitted to TCEQ but should be available for review.
<i>I certify</i>	As the PWS representative, I understand that customers with a lead, galvanized requiring replacement, or lead status unknown service lines should be informed within 30 days of completion of initial LSLI and annually thereafter until the service line is replaced.
<i>I certify</i>	As the PWS representative, I understand that the PWS should provide an updated LSLI in accordance with its tap sampling monitoring period schedule, but no more frequently than annually. The updated LSLI must be submitted within 30 days of the end of each tap sampling period.
<i>Randall J. Liska, P.E.</i>	The individual providing certification and acknowledgment to the above statements.