

Susceptibility Report for System ID 0200070

System Details

Water System ID	0200070
System Name	VARNER CREEK UTILITY DISTRICT
Address	PO BOX 265 WEST COLUMBIA, TX 774860265
County	BRAZORIA
Telephone	9793452805
PWS Type	C
Total Production	0

Ground Water Sources

Source ID	Drill Date	Top Screened Interval (Ft.)	Bottom Screened Interval (Ft.)	Pumpage Rate (GPM)	Entry Point	Operational Status
G0200070A		630	650	800	001	Operational
G0200070B		560	630	800	001	Operational

Surface Water Sources

Source ID	Type	Surface Water Body	Entry Point	Operational Status
No surface water sources				

PWS System Susceptibility Summary: Contaminants with HIGH Susceptibility

The system is rated as having HIGH susceptibility to the contaminants listed below.

D.W. CONTAM. CANDIDATE LIST

Contaminant Name	Structural Integrity	Aquifer/Watershed Properties	Nonpoint Source	Point Source	Area Primary Influence	Contaminant Occurrence	Summary
BORON	----	Moderate	High	----	----	----	High
DDE	Low	Moderate	High	----	----	----	High
DIAZINON	Low	Moderate	High	----	----	----	High

INORGANICS

Contaminant Name	Structural Integrity	Aquifer/Watershed Properties	Nonpoint Source	Point Source	Area Primary Influence	Contaminant Occurrence	Summary
TDS	Low	Moderate	High	----	----	High	High
CHLORIDE	Low	Moderate	Moderate	----	----	High	High
CYANIDE	----	Moderate	High	----	----	----	High
MANGANESE	----	Moderate	High	----	----	----	High

INORGANICS MONITORED

Contaminant Name	Structural Integrity	Aquifer/Watershed Properties	Nonpoint Source	Point Source	Area Primary Influence	Contaminant Occurrence	Summary
SPECIFIC CONDUCTANCE	----	Moderate	High	----	----	----	High

INORGANICS UNREGULATED

Contaminant Name	Structural Integrity	Aquifer/Watershed Properties	Nonpoint Source	Point Source	Area Primary Influence	Contaminant Occurrence	Summary
SODIUM	Low	Moderate	High	----	----	----	High

PHYSICAL

Contaminant Name	Structural Integrity	Aquifer/Watershed Properties	Nonpoint Source	Point Source	Area Primary Influence	Contaminant Occurrence	Summary
HARDNESS	----	Moderate	High	----	----	----	High

PHYSICAL PARAMETER

Contaminant Name	Structural Integrity	Aquifer/Watershed Properties	Nonpoint Source	Point Source	Area Primary Influence	Contaminant Occurrence	Summary
pH	----	Moderate	High	----	----	----	High

SOC MONITORED

Contaminant Name	Structural Integrity	Aquifer/Watershed Properties	Nonpoint Source	Point Source	Area Primary Influence	Contaminant Occurrence	Summary
2,4,5-T	Low	Moderate	High	----	----	----	High
ALDRIN	Low	Moderate	High	----	----	----	High
DIELDRIN	Low	Moderate	High	----	----	----	High

SOC REGULATED

Contaminant Name	Structural Integrity	Aquifer/Watershed Properties	Nonpoint Source	Point Source	Area Primary Influence	Contaminant Occurrence	Summary
2,4,5-TP	Low	Moderate	High	----	----	----	High
2,4-D	Low	Moderate	High	----	----	----	High
ALACHLOR	Low	Moderate	High	----	----	----	High
ATRAZINE	Low	Moderate	High	----	----	----	High
BENZO(A)PYRENE	Low	Moderate	High	----	----	----	High
SIMAZINE	Low	Moderate	High	----	----	----	High
CHLORDANE	Low	Moderate	High	----	----	----	High
ENDRIN	Low	Moderate	High	----	----	----	High
GLYPHOSATE	Low	Moderate	High	----	----	----	High
PENTACHLOROPHENOL	----	Moderate	High	----	----	----	High

VOC - OTHER COMPOUNDS

Contaminant Name	Structural Integrity	Aquifer/Watershed Properties	Nonpoint Source	Point Source	Area Primary Influence	Contaminant Occurrence	Summary
METHYL-T-BUTYL ETHER	Low	Moderate	High	----	----	----	High

VOC MONITORED

Contaminant Name	Structural Integrity	Aquifer/Watershed Properties	Nonpoint Source	Point Source	Area Primary Influence	Contaminant Occurrence	Summary
1,3-DICHLOROENZENE	----	Moderate	High	----	----	----	High

VOC REGULATED

Contaminant Name	Structural Integrity	Aquifer/Watershed Properties	Nonpoint Source	Point Source	Area Primary Influence	Contaminant Occurrence	Summary
1,1,2-TRICHLOROETHANE	Low	Moderate	High	----	----	----	High
BENZENE	Low	Moderate	High	----	----	----	High
TETRACHLOROETHYLENE	Low	Moderate	High	----	----	----	High
TOLUENE	Low	Moderate	High	----	----	----	High
TRANS-1,2-DICHLOROETHYLENE	Low	Moderate	High	----	----	----	High
TRICHLOROETHYLENE	Low	Moderate	High	----	----	----	High
VINYL CHLORIDE	Low	Moderate	High	----	----	----	High
XYLENES (TOTAL)	Low	Moderate	High	----	----	----	High

CIS-1,2-DICHLOROETHYLENE	Low	Moderate	High	----	----	----	High
DICHLOROMETHANE	Low	Moderate	High	----	----	----	High
ETHYLBENZENE	Low	Moderate	High	----	----	----	High

PWS System Susceptibility Summary: Contaminants with MODERATE Susceptibility

The system is rated as having MODERATE susceptibility to the contaminants listed below.

D.W. CONTAM. CANDIDATE LIST

Contaminant Name	Structural Integrity	Aquifer/Watershed Properties	Nonpoint Source	Point Source	Area Primary Influence	Contaminant Occurrence	Summary
1,2-DIPHENYLHYDRAZINE	----	Moderate	Low	----	----	----	Moderate
1,3-DICHLOROPROPENE	----	Moderate	Moderate	----	----	----	Moderate
2,4,6-TRICHLOROPHENOL	----	Moderate	Low	----	----	----	Moderate
2,4-DICHLOROPHENOL	----	Moderate	Moderate	----	----	----	Moderate
2,4-DINITROPHENOL	----	Moderate	Moderate	----	----	----	Moderate
2,4-DINITROTOLUENE	----	Moderate	Low	----	----	----	Moderate
2,6-DINITROTOLUENE	----	Moderate	Low	----	----	----	Moderate
2-METHYLPHENOL	----	Moderate	Low	----	----	----	Moderate
ACETOCHLOR	Low	Moderate	Moderate	----	----	----	Moderate
TERBACIL	Low	Moderate	Moderate	----	----	----	Moderate
TERBUFOS	Low	Moderate	Moderate	----	----	----	Moderate
CYANAZINE	Low	Moderate	Moderate	----	----	----	Moderate
DCPA DI-ACID DEGRADATE	Low	Moderate	Moderate	----	----	----	Moderate
DCPA MONO-ACID DEGRADATE	Low	Moderate	Moderate	----	----	----	Moderate
DISULFOTON	Low	Moderate	Moderate	----	----	----	Moderate
DIURON	Low	Moderate	Moderate	----	----	----	Moderate
EPTC	Low	Moderate	Moderate	----	----	----	Moderate
FONOFOS	Low	Moderate	Moderate	----	----	----	Moderate
LINURON	Low	Moderate	Moderate	----	----	----	Moderate
MOLINATE	Low	Moderate	Moderate	----	----	----	Moderate
NITROBENZENE	----	Moderate	Low	----	----	----	Moderate
ORGANOTINS	----	Moderate	Low	----	----	----	Moderate
PERCHLORATE	----	Moderate	Low	----	----	----	Moderate
PROPAZINE	Low	Moderate	Moderate	----	----	----	Moderate
RDX	----	Moderate	Low	----	----	----	Moderate

INORGANICS

Contaminant Name	Structural Integrity	Aquifer/Watershed Properties	Nonpoint Source	Point Source	Area Primary Influence	Contaminant Occurrence	Summary
ALUMINUM	----	Moderate	Low	----	----	----	Moderate
ANTIMONY	Low	Moderate	----	----	----	----	Moderate
ARSENIC	Low	Moderate	Low	----	----	----	Moderate
ASBESTOS	----	Moderate	----	----	----	----	Moderate
BARIUM	Low	Moderate	Low	----	----	----	Moderate
BERYLLIUM	----	Moderate	----	----	----	----	Moderate
SELENIUM	Low	Moderate	Low	----	----	----	Moderate
SILVER	Low	Moderate	----	----	----	----	Moderate
SULFATE	Low	Moderate	Low	----	----	----	Moderate
THALLIUM	----	Moderate	Low	----	----	----	Moderate
ZINC	----	Moderate	Moderate	----	----	----	Moderate
BROMIDE	Low	Moderate	Moderate	----	----	----	Moderate
CADMIUM	Low	Moderate	----	----	----	----	Moderate
CHROMIUM	Low	Moderate	----	----	----	----	Moderate
COPPER	Low	Moderate	----	----	----	----	Moderate
FLUORIDE	Low	Moderate	----	----	----	----	Moderate
HYDROGEN SULFIDE	Low	Moderate	Moderate	----	----	----	Moderate
IRON	----	Moderate	Low	----	----	----	Moderate
LEAD	Low	Moderate	Low	----	----	----	Moderate

MERCURY	Low	Moderate	Low	----	----	----	Moderate
NICKEL	Low	Moderate	Low	----	----	----	Moderate
NITRATE	Low	Moderate	Low	----	----	----	Moderate
NITRATE+NITRITE	Low	Moderate	Low	----	----	----	Moderate
NITRITE	Low	Moderate	Low	----	----	----	Moderate

INORGANICS MONITORED

Contaminant Name	Structural Integrity	Aquifer/Watershed Properties	Nonpoint Source	Point Source	Area Primary Influence	Contaminant Occurrence	Summary
ALKALINITY	----	Moderate	----	----	----	----	Moderate
BICARBONATE	----	Moderate	----	----	----	----	Moderate
CARBONATE	----	Moderate	----	----	----	----	Moderate
MAGNESIUM	Low	Moderate	Moderate	----	----	----	Moderate

INORGANICS UNREGULATED

Contaminant Name	Structural Integrity	Aquifer/Watershed Properties	Nonpoint Source	Point Source	Area Primary Influence	Contaminant Occurrence	Summary
CALCIUM	----	Moderate	Low	----	----	----	Moderate

RADIOCHEM

Contaminant Name	Structural Integrity	Aquifer/Watershed Properties	Nonpoint Source	Point Source	Area Primary Influence	Contaminant Occurrence	Summary
STRONTIUM-90	----	Moderate	Low	----	----	----	Moderate
TRITIUM	----	Moderate	Low	----	----	----	Moderate
GROSS ALPHA	----	Moderate	Low	----	----	----	Moderate
GROSS BETA	----	Moderate	Low	----	----	----	Moderate
RADIUM-226	----	Moderate	Low	----	----	----	Moderate
RADIUM-228	----	Moderate	Low	----	----	----	Moderate

RADIOCHEM UNREGULATED

Contaminant Name	Structural Integrity	Aquifer/Watershed Properties	Nonpoint Source	Point Source	Area Primary Influence	Contaminant Occurrence	Summary
STRONTIUM-89	----	Moderate	Low	----	----	----	Moderate
URANIUM	----	Moderate	Low	----	----	----	Moderate
RADON	----	Moderate	Low	----	----	----	Moderate

SOC MONITORED

Contaminant Name	Structural Integrity	Aquifer/Watershed Properties	Nonpoint Source	Point Source	Area Primary Influence	Contaminant Occurrence	Summary
3-HYDROXYCARBOFURAN	Low	Moderate	Moderate	----	----	----	Moderate
ACENAPHTHENE	Low	Moderate	Moderate	----	----	----	Moderate
ACENAPHTHYLENE	----	Moderate	Low	----	----	----	Moderate
ANTHRACENE	Low	Moderate	Moderate	----	----	----	Moderate
BENTAZON	Low	Moderate	Moderate	----	----	----	Moderate
BENZO[A]ANTHRACENE	Low	Moderate	Moderate	----	----	----	Moderate
BENZO[B]FLUORANTHENE	----	Moderate	Low	----	----	----	Moderate
BENZO[G,H,I]PERYLENE	----	Moderate	Low	----	----	----	Moderate
BENZO[K]FLUORANTHENE	----	Moderate	----	----	----	----	Moderate
TRIFLURALIN	Low	Moderate	Moderate	----	----	----	Moderate
BROMACIL	Low	Moderate	Moderate	----	----	----	Moderate
BUTACHLOR	Low	Moderate	Moderate	----	----	----	Moderate
BUTYL BENZYL PHTHALATE	----	Moderate	Low	----	----	----	Moderate
CARBARYL	Low	Moderate	Moderate	----	----	----	Moderate
CHRYSENE	Low	Moderate	Moderate	----	----	----	Moderate
DIBENZ[A,H]ANTHRACENE	Low	Moderate	Moderate	----	----	----	Moderate
DICAMBA	Low	Moderate	Moderate	----	----	----	Moderate

DIETHYL PHTHALATE	Low	Moderate	Moderate	----	----	----	Moderate
DIMETHYL PHTHALATE	Low	Moderate	Moderate	----	----	----	Moderate
DI-N-BUTYL PHTHALATE	----	Moderate	Low	----	----	----	Moderate
FLUORENE	Low	Moderate	Moderate	----	----	----	Moderate
INDENO[1,2,3,CD]PYRENE	----	Moderate	----	----	----	----	Moderate
LAMBAST	Low	Moderate	Moderate	----	----	----	Moderate
METHIOCARB	Low	Moderate	Moderate	----	----	----	Moderate
METHOMYL	Low	Moderate	Moderate	----	----	----	Moderate
METOLACHLOR	Low	Moderate	Moderate	----	----	----	Moderate
METRIBUZIN	Low	Moderate	Moderate	----	----	----	Moderate
PHENANTHRENE	----	Moderate	Low	----	----	----	Moderate
PROMETON	Low	Moderate	Moderate	----	----	----	Moderate
PROPACHLOR	Low	Moderate	Moderate	----	----	----	Moderate
PYRENE	Low	Moderate	Moderate	----	----	----	Moderate

SOC REGULATED

Contaminant Name	Structural Integrity	Aquifer/Watershed Properties	Nonpoint Source	Point Source	Area Primary Influence	Contaminant Occurrence	Summary
2,3,7,8-TCDD	----	Moderate	----	----	----	----	Moderate
ALDICARB	Low	Moderate	Moderate	----	----	----	Moderate
ALDICARB SULFONE	Low	Moderate	Moderate	----	----	----	Moderate
ALDICARB SULFOXIDE	Low	Moderate	Moderate	----	----	----	Moderate
TOXAPHENE	Low	Moderate	Moderate	----	----	----	Moderate
CARBOFURAN	Low	Moderate	Moderate	----	----	----	Moderate
CHLORDANE (ALPHA-CHLORDANE)	Low	Moderate	Moderate	----	----	----	Moderate
CHLORDANE (GAMMA-CHLORDANE)	Low	Moderate	Moderate	----	----	----	Moderate
CHLORDANE (TRANS-NONACHLOR)	Low	Moderate	Moderate	----	----	----	Moderate
DALAPON	Low	Moderate	Moderate	----	----	----	Moderate
DI-(2-ETHYLHEXYL)ADIPATE	Low	Moderate	Moderate	----	----	----	Moderate
DI-(2-ETHYLHEXYL)PHTHALATE	Low	Moderate	Moderate	----	----	----	Moderate
DIBROMOCHLOROPROPANE	----	Moderate	Moderate	----	----	----	Moderate
DINOSEB	Low	Moderate	Moderate	----	----	----	Moderate
DIQUAT	Low	Moderate	Moderate	----	----	----	Moderate
ENDOTHALL	Low	Moderate	Moderate	----	----	----	Moderate
ETHYLENE DIBROMIDE	----	Moderate	----	----	----	----	Moderate
HEPTACHLOR	Low	Moderate	Moderate	----	----	----	Moderate
HEPTACHLOR EPOXIDE	Low	Moderate	Moderate	----	----	----	Moderate
HEXACHLOROBENZENE	----	Moderate	Moderate	----	----	----	Moderate
HEXACHLOROCYCLOPENTADIENE	----	Moderate	Moderate	----	----	----	Moderate
LINDANE	Low	Moderate	Moderate	----	----	----	Moderate
METHOXYCHLOR	Low	Moderate	Moderate	----	----	----	Moderate
OXAMYL	Low	Moderate	Moderate	----	----	----	Moderate
PCBs	----	Moderate	Low	----	----	----	Moderate
PICLORAM	Low	Moderate	Moderate	----	----	----	Moderate

THM

Contaminant Name	Structural Integrity	Aquifer/Watershed Properties	Nonpoint Source	Point Source	Area Primary Influence	Contaminant Occurrence	Summary
BROMOCHLOROMETHANE	----	Moderate	----	----	----	----	Moderate
BROMODICHLOROMETHANE	Low	Moderate	----	----	----	----	Moderate
BROMOFORM	Low	Moderate	Low	----	----	----	Moderate
BROMOMETHANE	----	Moderate	Moderate	----	----	----	Moderate
CHLOROFORM	Low	Moderate	Moderate	----	----	----	Moderate
DIBROMOCHLOROMETHANE	----	Moderate	----	----	----	----	Moderate

VOC - OTHER COMPOUNDS

Contaminant Name	Structural Integrity	Aquifer/Watershed Properties	Nonpoint Source	Point Source	Area Primary Influence	Contaminant Occurrence	Summary
2-HEXANONE	----	Moderate	Low	----	----	----	Moderate
4-METHYL-2-PENTANONE (MIBK)	----	Moderate	Low	----	----	----	Moderate
ACETONE	Low	Moderate	Low	----	----	----	Moderate
ACRYLONITRILE	----	Moderate	Low	----	----	----	Moderate
Tetrahydrofuran	----	Moderate	Low	----	----	----	Moderate
VINYL ACETATE	----	Moderate	Low	----	----	----	Moderate
CARBON DISULFIDE	----	Moderate	Moderate	----	----	----	Moderate
ETHYL METHACRYLATE	----	Moderate	Low	----	----	----	Moderate
METHYL IODIDE (Iodomethane)	----	Moderate	Moderate	----	----	----	Moderate
METHYL ETHYL KETONE	----	Moderate	Low	----	----	----	Moderate
METHYL METHACRYLATE	----	Moderate	Low	----	----	----	Moderate

VOC MONITORED

Contaminant Name	Structural Integrity	Aquifer/Watershed Properties	Nonpoint Source	Point Source	Area Primary Influence	Contaminant Occurrence	Summary
1,1,1,2-TETRACHLOROETHANE	----	Moderate	Low	----	----	----	Moderate
1,1,2,2-TETRACHLOROETHANE	Low	Moderate	Moderate	----	----	----	Moderate
1,1-DICHLOROETHANE	----	Moderate	Low	----	----	----	Moderate
1,1-DICHLOROPROPENE	----	Moderate	Low	----	----	----	Moderate
1,2,3-TRICHLOROBENZENE	----	Moderate	Low	----	----	----	Moderate
1,2,3-TRICHLOROPROPANE	----	Moderate	Low	----	----	----	Moderate
1,2,4-TRIMETHYLBENZENE	Low	Moderate	Moderate	----	----	----	Moderate
1,3,5-TRIMETHYLBENZENE	Low	Moderate	Moderate	----	----	----	Moderate
1,3-DICHLOROPROPANE	----	Moderate	Moderate	----	----	----	Moderate
2,2-DICHLOROPROPANE	----	Moderate	----	----	----	----	Moderate
2-CHLOROTOLUENE	Low	Moderate	Moderate	----	----	----	Moderate
4-CHLOROTOLUENE	----	Moderate	Low	----	----	----	Moderate
4-ISOPROPYLTOLUENE	Low	Moderate	Moderate	----	----	----	Moderate
S-BUTYLBENZENE	Low	Moderate	Moderate	----	----	----	Moderate
T-BUTYLBENZENE	Low	Moderate	Moderate	----	----	----	Moderate
TRANS-1,3-DICHLOROPROPENE	----	Moderate	Moderate	----	----	----	Moderate
TRICHLOROFLUOROMETHANE	Low	Moderate	Moderate	----	----	----	Moderate
BROMOBENZENE	----	Moderate	----	----	----	----	Moderate
CHLOROETHANE	Low	Moderate	Moderate	----	----	----	Moderate
CHLOROMETHANE	----	Moderate	Low	----	----	----	Moderate
CIS-1,3-DICHLOROPROPENE	----	Moderate	Moderate	----	----	----	Moderate
DIBROMOMETHANE	----	Moderate	Low	----	----	----	Moderate
DICHLORODIFLUOROMETHANE	Low	Moderate	Moderate	----	----	----	Moderate
HEXACHLOROBUTADIENE	----	Moderate	Low	----	----	----	Moderate
ISOPROPYLBENZENE	Low	Moderate	Moderate	----	----	----	Moderate
M + P XYLENE	Low	Moderate	Moderate	----	----	----	Moderate
NAPHTHALENE	Low	Moderate	Moderate	----	----	----	Moderate
N-BUTYLBENZENE	Low	Moderate	Moderate	----	----	----	Moderate
N-PROPYLBENZENE	Low	Moderate	Moderate	----	----	----	Moderate

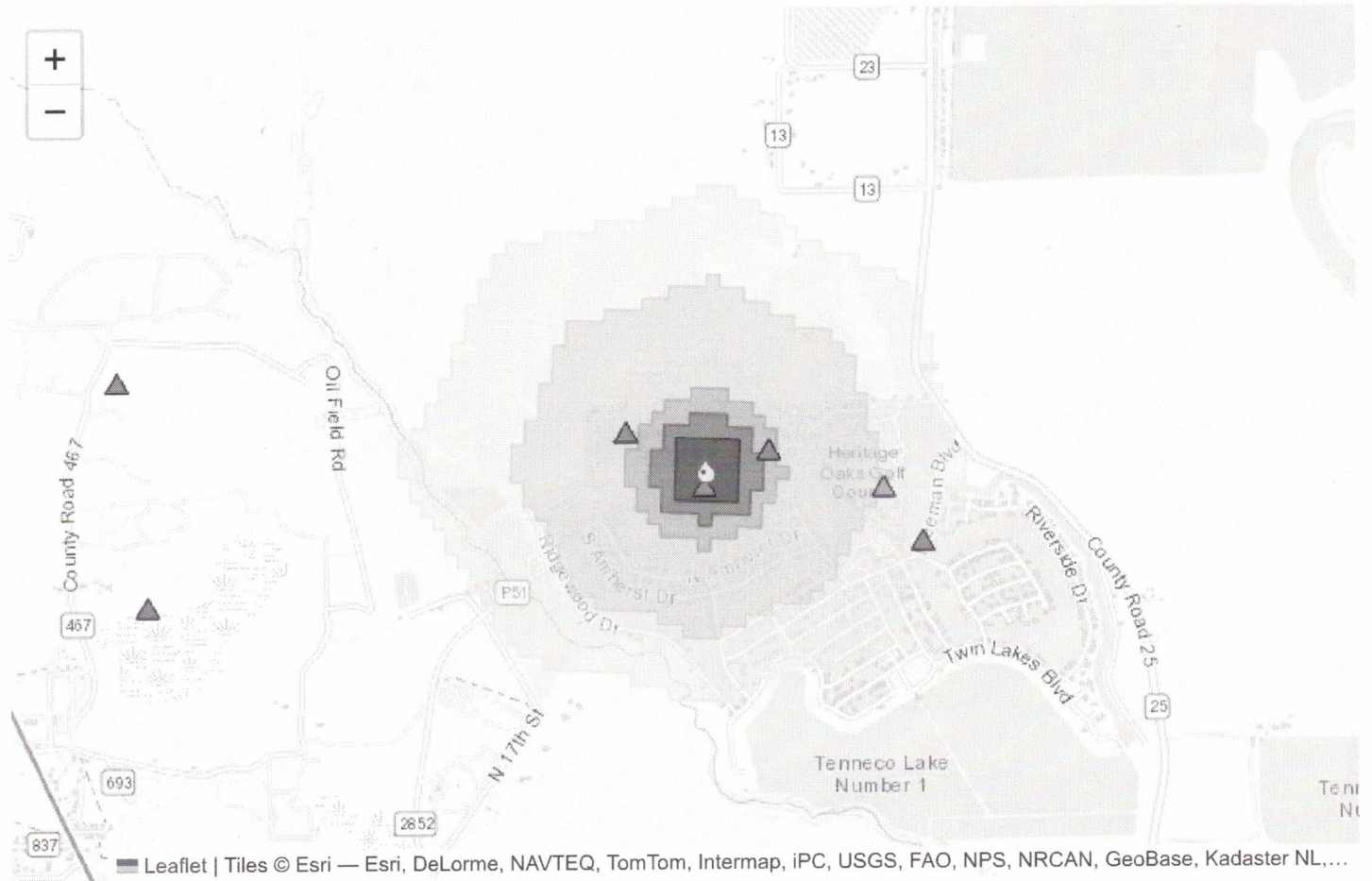
VOC REGULATED

Contaminant Name	Structural Integrity	Aquifer/Watershed Properties	Nonpoint Source	Point Source	Area Primary Influence	Contaminant Occurrence	Summary
1,1,1-TRICHLOROETHANE	Low	Moderate	Moderate	----	----	----	Moderate
1,1-DICHLOROETHYLENE	Low	Moderate	Moderate	----	----	----	Moderate
1,2,4-TRICHLOROBENZENE	----	Moderate	Moderate	----	----	----	Moderate
1,2-DICHLOROETHANE	----	Moderate	Moderate	----	----	----	Moderate
1,2-DICHLOROPROPANE	Low	Moderate	Moderate	----	----	----	Moderate
STYRENE	----	Moderate	Low	----	----	----	Moderate
CARBON TETRACHLORIDE	Low	Moderate	Moderate	----	----	----	Moderate

CHLOROBENZENE (MONOCHLOROBENZENE)	Low	Moderate	Moderate	----	----	----	Moderate
MONOCHLOROBENZENE (CHLOROBENZENE)	----	Moderate	Low	----	----	----	Moderate
M-XYLENE	Low	Moderate	Moderate	----	----	----	Moderate
ORTHO-1,2-DICHLOROBENZENE	Low	Moderate	Moderate	----	----	----	Moderate
O-XYLENE	Low	Moderate	Moderate	----	----	----	Moderate
PARA-1,4-DICHLOROBENZENE	Low	Moderate	Moderate	----	----	----	Moderate
P-XYLENE	Low	Moderate	Moderate	----	----	----	Moderate

Other

Contaminant Name	Structural Integrity	Aquifer/Watershed Properties	Nonpoint Source	Point Source	Area Primary Influence	Contaminant Occurrence	Summary
AROCOR (PCB)	Low	Moderate	Moderate	----	----	----	Moderate
TOTAL ALPHA EMITTING RADIUM	----	Moderate	Low	----	----	----	Moderate
TOTAL COLIFORM	----	Moderate	Moderate	----	----	----	Moderate
TOTAL TRIHALOMETHANE	----	Moderate	----	----	----	----	Moderate
TRIAZINES	Low	Moderate	Moderate	----	----	----	Moderate
CRYPTOSPORIDIUM PARVUM	----	Moderate	Moderate	----	----	----	Moderate
ESCHERICHIA COLI	----	Moderate	Moderate	----	----	----	Moderate
FECAL VIRUSES	----	Moderate	Moderate	----	----	----	Moderate
GIARDIA LAMBLIA	----	Moderate	Moderate	----	----	----	Moderate
P-ALKALINITY	----	Moderate	----	----	----	----	Moderate



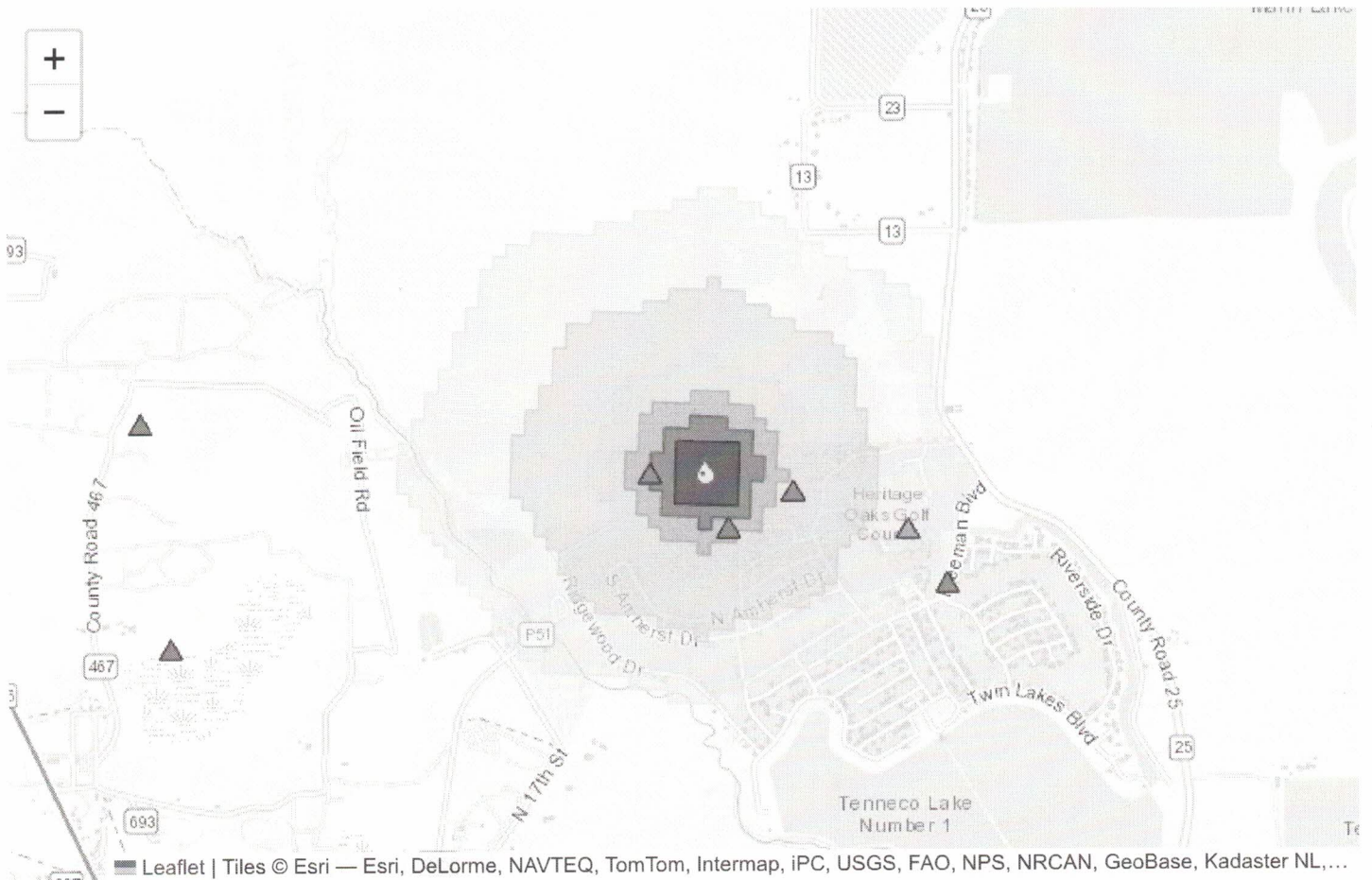
Contaminants with HIGH Susceptibility

No contaminants with high susceptibility.

Contaminants with MODERATE Susceptibility

No contaminants with moderate susceptibility.

Source Details: G0200070B



Leaflet | Tiles © Esri — Esri, DeLorme, NAVTEQ, TomTom, Intermap, iPC, USGS, FAO, NPS, NRCAN, GeoBase, Kadaster NL,...

Contaminants with HIGH Susceptibility

No contaminants with high susceptibility.

Contaminants with MODERATE Susceptibility

No contaminants with moderate susceptibility.

Contaminant List

List of regulated and unregulated assessed contaminants grouped by contaminant class. TCEQ Chapter 290 Subchapter F rules are cited for each drinking water standard (secondary drinking water standards are italicized). The TCEQ threshold limit is the concentration used within the contaminant occurrence component to determine if a detection of the chemical was found during water quality monitoring activities. The chemical abstract service (CAS) number is a unique identifier for each chemical.

D.W. CONTAM. CANDIDATE LIST

Contaminant Name	Drinking Water Standard	PWS Rule	TCEQ Threshold	CAS Number
CYANAZINE			0.01 ug/L	21725-46-2
DCPA DI-ACID DEGRADATE			0.00 ug/L	2136-79-0
BORON	2.20 mg/L		10.00 ug/L	11113-50-1
2,4,6-TRICHLOROPHENOL	0.08 mg/L		20.00 ug/L	88-06-2
2,4-DICHLOROPHENOL	0.07 mg/L		20.00 ug/L	120-83-2
2,4-DINITROPHENOL	0.05 mg/L		20.00 ug/L	51-28-5
2,4-DINITROTOLUENE	0.00 mg/L		5.00 ug/L	121-14-2
2,6-DINITROTOLUENE	0.00 mg/L		5.00 ug/L	606-20-2
2-METHYLPHENOL	0.05 mg/L		5.00 ug/L	95-48-7
ACETOCHLOR			0.01 ug/L	34256-82-1
1,2-DIPHENYLHYDRAZINE	0.00 mg/L		0.10 ug/L	122-66-7
1,3-DICHLOROPROPENE	0.01 mg/L		0.10 ug/L	542-75-6
PROPАЗINE			0.01 ug/L	139-40-2
RDX	0.01 mg/L		0.10 ug/L	121-82-4
TERBACIL			0.01 ug/L	5902-51-2
TERBUFOS			0.01 ug/L	13071-79-9
DCPA MONO-ACID DEGRADATE			0.00 ug/L	887-54-7
DDE	0.00 mg/L		0.01 ug/L	72-55-9
DIAZINON	0.02 mg/L		0.01 ug/L	333-41-5
DISULFOTON	0.00 mg/L		0.01 ug/L	298-04-4
DIURON	0.05 mg/L		0.05 ug/L	330-54-1
EPTC	0.61 mg/L		0.01 ug/L	759-94-4
FONOFOS			0.01 ug/L	944-22-9
LINURON			0.01 ug/L	330-55-2
MOLINATE	0.05 mg/L		0.01 ug/L	2212-67-1
NITROBENZENE	0.01 mg/L		0.10 ug/L	98-95-3
ORGANOTINS				
PERCHLORATE				14797-73-0

INORGANICS

Contaminant Name	Drinking Water Standard	PWS Rule	TCEQ Threshold	CAS Number
CHLORIDE		§290.113	125.00 mg/L	16887-00-6
CHROMIUM	0.10 mg/L	§290.103(1)	50.00 ug/L	11104-59-9
COPPER	1.30 mg/L	§290.120	65.00 ug/L	17493-86-6
CYANIDE	0.20 mg/L	§290.103(1)	0.01 mg/L	57-12-5
BERYLLIUM	0.00 mg/L	§290.103(1)	2.00 ug/L	14701-08-7
BROMIDE				
CADMIUM	0.01 mg/L	§290.103(1)	2.50 ug/L	22537-48-0
ALUMINUM	24.44 mg/L	§290.113	0.10 ug/L	14903-36-7
ANTIMONY	0.01 mg/L	§290.103(1)	3.00 ug/L	64924-52-3
ARSENIC	0.05 mg/L	§290.103(1)	10.00 ug/L	15584-04-0
ASBESTOS	7.00 mg/L		-9,999.00 ug/L	1332-21-4
BARIUM	2.00 mg/L	§290.103(1)	1,000.00 ug/L	16541-35-8
SELENIUM	0.05 mg/L	§290.103(1)	25.00 ug/L	7782-49-2
SILVER	0.12 mg/L	§290.113	25.00 ug/L	14701-21-4
SULFATE	500.00 mg/L	§290.113	125.00 mg/L	14808-79-8
TDS		§290.113	250.00 mg/L	
THALLIUM	0.00 mg/L	§290.103(1)	1.00 ug/L	7440-28-0
ZINC	7.33 mg/L	§290.113	2.50 ug/L	15176-26-8
FLUORIDE	4.00 mg/L	§290.103(1)	2.00 mg/L	16984-48-8
HYDROGEN SULFIDE		§290.113	0.00 mg/L	15035-72-0

IRON		§290.113	150.00 ug/L	15438-31-0
LEAD	0.02 mg/L	§290.120	0.00 ug/L	14701-27-0
MANGANESE	1.15 mg/L	§290.113	25.00 ug/L	14333-14-3
MERCURY	0.00 mg/L	§290.103(1)	1.00 ug/L	14302-87-5
NICKEL	0.49 mg/L	§290.103(1)	50.00 ug/L	14701-22-5
NITRATE	10.00 mg/L	§290.103(1)	3.00 mg/L	14797-55-8
NITRATE+NITRITE	10.00 mg/L	§290.103(1)	3.00 mg/L	none
NITRITE	1.00 mg/L	§290.103(1)	0.50 mg/L	14797-65-0

INORGANICS MONITORED

Contaminant Name	Drinking Water Standard	PWS Rule	TCEQ Threshold	CAS Number
CARBONATE			1.00 mg/L	3812-32-6
BICARBONATE			1.00 mg/L	71-52-3
ALKALINITY			1.00 mg/L	
SPECIFIC CONDUCTANCE			1.00 uS/cm	
MAGNESIUM			0.01 mg/L	14581-92-1

INORGANICS UNREGULATED

Contaminant Name	Drinking Water Standard	PWS Rule	TCEQ Threshold	CAS Number
CALCIUM			0.02 mg/L	14102-48-8
SODIUM			0.20 mg/L	17341-25-2

PHYSICAL

Contaminant Name	Drinking Water Standard	PWS Rule	TCEQ Threshold	CAS Number
HARDNESS			1.00 mg/L	

PHYSICAL PARAMETER

Contaminant Name	Drinking Water Standard	PWS Rule	TCEQ Threshold	CAS Number
pH		§290.113	0.10 pH	

RADIOCHEM

Contaminant Name	Drinking Water Standard	PWS Rule	TCEQ Threshold	CAS Number
RADIUM-226	5.00 mg/L	§290.110	1.00 pCi/L	13982-63-3
RADIUM-228	5.00 mg/L	§290.110	0.50 pCi/L	15262-20-1
STRONTIUM-90		§290.110	0.50 pCi/L	10098-97-2
TRITIUM		§290.110	1.00 pCi/L	15086-10-9
GROSS ALPHA	15.00 mg/L	§290.110	3.00 pCi/L	
GROSS BETA	4.00 mg/L	§290.110	3.00 pCi/L	

RADIOCHEM UNREGULATED

Contaminant Name	Drinking Water Standard	PWS Rule	TCEQ Threshold	CAS Number
RADON	300.00 mg/L		0.50 pCi/L	10043-92-2
STRONTIUM-89			0.50 pCi/L	14701-18-9
URANIUM	0.02 mg/L		1.00 ug/L	none

SOC MONITORED

Contaminant Name	Drinking Water Standard	PWS Rule	TCEQ Threshold	CAS Number
CHRYSENE	0.13 mg/L		0.10 ug/L	218-01-9
BENZO[B]FLUORANTHENE	0.00 mg/L		10.00 ug/L	205-99-2
BENZO[G,H,I]PERYLENE	0.73 mg/L		10.00 ug/L	191-24-2
BENZO[K]FLUORANTHENE	0.01 ug/L		10.00 ug/L	207-08-9
BROMACIL			0.05 ug/L	314-40-9
BUTACHLOR			0.05 ug/L	23184-66-9
BUTYL BENZYL PHTHALATE	4.89 mg/L		5.00 ug/L	85-68-7

CARBARYL	2.44 mg/L	0.01 ug/L	63-25-2
2,4,5-T	0.24 mg/L	0.05 ug/L	93-76-5
3-HYDROXYCARBOFURAN		0.05 ug/L	16655-82-6
ACENAPHTHENE	1.47 mg/L	5.00 ug/L	83-32-9
ACENAPHTHYLENE	1.47 mg/L	5.00 ug/L	208-96-8
ALDRIN	0.00 mg/L	0.10 ug/L	309-00-2
ANTHRACENE	7.33 mg/L	5.00 ug/L	120-12-7
BENTAZON		0.05 ug/L	25057-89-0
BENZO[A]ANTHRACENE	0.00 mg/L	10.00 ug/L	56-55-3
PHENANTHRENE		5.00 ug/L	85-01-8
PROMETON		0.01 ug/L	1610-18-0
PROPACHLOR		0.01 ug/L	1918-16-7
PYRENE	0.73 mg/L	0.10 ug/L	129-00-0
TRIFLURALIN	0.12 mg/L	0.01 ug/L	1582-09-8
DIBENZ[A,H]ANTHRACENE	0.00 mg/L	10.00 ug/L	53-70-3
DICAMBA	0.73 mg/L	0.05 ug/L	1918-00-9
DIELDRIN	0.00 mg/L	0.01 ug/L	60-57-1
DIETHYL PHTHALATE	19.55 mg/L	5.00 ug/L	84-66-2
DIMETHYL PHTHALATE	19.55 mg/L	5.00 ug/L	131-11-3
DI-N-BUTYL PHTHALATE	2.44 mg/L	5.00 ug/L	84-74-2
FLUORENE	0.98 mg/L	0.10 ug/L	86-73-7
INDENO[1,2,3,CD]PYRENE		10.00 ug/L	193-39-5
LAMBAST		0.05 ug/L	845-52-3
METHIOCARB		0.05 ug/L	2032-65-7
METHOMYL	0.61 mg/L	0.05 ug/L	16752-77-5
METOLACHLOR	3.67 mg/L	0.01 ug/L	51218-45-2
METRIBUZIN		0.01 ug/L	21087-64-9

SOC REGULATED

Contaminant Name	Drinking Water Standard	PWS Rule	TCEQ Threshold	CAS Number
CHLORDANE	0.00 mg/L	\$290.103(3)(A)	0.10 ug/L	57-74-9
CHLORDANE (ALPHA-CHLORDANE)	0.00 mg/L	\$290.103(3)(A)	0.10 ug/L	5103-71-9
CHLORDANE (GAMMA-CHLORDANE)	0.00 mg/L	\$290.103(3)(A)	0.10 ug/L	12789-03-6
CHLORDANE (TRANS-NONACHLOR)	0.00 mg/L	\$290.103(3)(A)	0.10 ug/L	39765-80-5
DALAPON	0.20 mg/L	\$290.103(3)(A)	0.05 mg/L	75-99-0
CARBOFURAN	0.04 mg/L	\$290.103(3)(A)	0.01 ug/L	1563-66-2
2,3,7,8-TCDD	0.00 mg/L	\$290.103(3)(A)	0.10 mg/L	1746-01-6
2,4,5-TP	0.05 mg/L	\$290.103(3)(A)	0.05 ug/L	93-72-1
2,4-D	0.07 mg/L	\$290.103(3)(A)	0.15 ug/L	94-75-7
ALACHLOR	0.00 mg/L	\$290.103(3)(A)	0.01 ug/L	15972-60-8
ALDICARB	0.01 mg/L	\$290.103(3)(A)	0.55 ug/L	116-06-3
ALDICARB SULFONE	0.01 mg/L	\$290.103(3)(A)	0.10 ug/L	1646-88-4
ALDICARB SULFOXIDE	0.01 mg/L	\$290.103(3)(A)	0.05 ug/L	1646-87-3
ATRAZINE	0.00 mg/L	\$290.103(3)(A)	0.01 ug/L	1912-24-9
BENZO(A)PYRENE	0.00 mg/L	\$290.103(3)(A)	10.00 ug/L	50-32-8
PICLORAM	0.50 mg/L	\$290.103(3)(A)	0.05 ug/L	1918-02-1
SIMAZINE	0.00 mg/L		0.01 ug/L	122-34-9
TOXAPHENE	0.00 mg/L	\$290.103(3)(A)	2.00 ug/L	8001-35-2
DI-(2-ETHYLHEXYL)ADIPATE	0.40 mg/L	\$290.103(3)(A)	5.00 ug/L	103-23-1
DI-(2-ETHYLHEXYL)PHTHALATE	0.01 mg/L	\$290.103(3)(A)	5.00 ug/L	117-81-7
DIBROMOCHLOROPROPANE	0.00 mg/L	\$290.103(3)(A)	0.10 ug/L	67708-83-2
DINOSEB	0.01 mg/L	\$290.103(3)(A)	0.05 ug/L	88-85-7
DIQUAT	0.02 mg/L	\$290.103(3)(A)	0.05 mg/L	2764-72-9
ENDOTHALL	0.10 mg/L	\$290.103(3)(A)	0.05 ug/L	145-73-3
ENDRIN	0.00 mg/L	\$290.103(3)(A)	0.05 ug/L	72-20-8
ETHYLENE DIBROMIDE	0.00 mg/L	\$290.103(3)(A)	0.10 ug/L	106-93-4
GLYPHOSATE	0.70 mg/L	\$290.103(3)(A)	0.05 ug/L	1071-83-6
HEPTACHLOR	0.00 mg/L	\$290.103(3)(A)	0.10 ug/L	76-44-8
HEPTACHLOR EPOXIDE	0.00 mg/L	\$290.103(3)(A)	0.10 ug/L	1024-57-3
HEXACHLOROBENZENE	0.00 mg/L	\$290.103(3)(A)	5.00 ug/L	118-74-1
HEXACHLOROCYCLOPENTADIENE	0.05 mg/L	\$290.103(3)(A)	5.00 ug/L	77-47-4

LINDANE	0.00 mg/L	\$290.103(3)(A)	0.01 ug/L	58-89-9
METHOXYCHLOR	0.04 mg/L	\$290.103(3)(A)	0.05 ug/L	72-43-5
OXAMYL	0.20 mg/L	\$290.103(3)(A)	0.05 ug/L	23135-22-0
PCBs	0.00 mg/L	\$290.103(3)(A)	0.10 ug/L	53469-21-9
PENTACHLOROPHENOL	0.00 mg/L	\$290.103(3)(A)	30.00 ug/L	87-86-5

THM

Contaminant Name	Drinking Water Standard	PWS Rule	TCEQ Threshold	CAS Number
CHLOROFORM	0.10 mg/L	\$290.116	0.10 ug/L	67-66-3
BROMOCHLOROMETHANE	0.98 mg/L		0.10 ug/L	74-97-5
BROMODICHLOROMETHANE	0.10 mg/L	\$290.116	0.10 ug/L	75-27-4
BROMOFORM	0.10 mg/L	\$290.116	0.10 ug/L	75-25-2
BROMOMETHANE	0.03 mg/L		0.10 ug/L	74-83-9
DIBROMOCHLOROMETHANE	0.10 mg/L	\$290.116	0.10 ug/L	124-48-1

VOC - OTHER COMPOUNDS

Contaminant Name	Drinking Water Standard	PWS Rule	TCEQ Threshold	CAS Number
CARBON DISULFIDE	2.44 mg/L		0.10 ug/L	75-15-0
2-HEXANONE	1.47 mg/L		0.10 ug/L	591-78-6
4-METHYL-2-PENTANONE (MIBK)	1.96 mg/L		0.10 ug/L	108-10-1
ACETONE	2.44 mg/L		0.10 ug/L	67-64-1
ACRYLONITRILE	0.00 mg/L		0.10 ug/L	107-13-1
TETRAHYDROFURAN	0.12 mg/L		0.10 ug/L	109-99-9
VINYL ACETATE	24.44 mg/L		0.10 ug/L	108-05-4
ETHYL METHACRYLATE	2.20 mg/L		0.10 ug/L	97-63-2
METHYL IODIDE (Iodomethane)	0.03 mg/L		0.10 ug/L	74-88-4
METHYL ETHYL KETONE	14.67 mg/L		0.10 ug/L	78-93-3
METHYL METHACRYLATE	34.22 mg/L		0.10 ug/L	80-62-6
METHYL-T-BUTYL ETHER	0.24 mg/L		0.10 ug/L	1634-04-4

VOC MONITORED

Contaminant Name	Drinking Water Standard	PWS Rule	TCEQ Threshold	CAS Number
CHLOROETHANE	9.78 mg/L		0.10 ug/L	75-00-3
CHLOROMETHANE	0.07 mg/L		0.10 ug/L	74-87-3
CIS-1,3-DICHLOROPROPENE	0.00 mg/L		0.10 ug/L	10061-01-5
BROMOBENZENE	0.49 mg/L		0.10 ug/L	108-86-1
2-CHLOROTOLUENE	0.49 mg/L		0.10 ug/L	95-49-8
4-CHLOROTOLUENE	0.49 mg/L		0.10 ug/L	106-43-4
4-ISOPROPYLTOLUENE	2.44 mg/L		0.10 ug/L	99-87-6
1,1,1,2-TETRACHLOROETHANE	0.04 mg/L		0.10 ug/L	630-20-6
1,1,2,2-TETRACHLOROETHANE	0.17 mg/L		0.10 ug/L	79-34-5
1,1-DICHLOROETHANE	2.44 mg/L		0.10 ug/L	75-34-3
1,1-DICHLOROPROPENE	0.01 mg/L		0.10 ug/L	563-58-6
1,2,3-TRICHLOROBENZENE	0.07 mg/L		0.10 ug/L	87-61-6
1,2,3-TRICHLOROPROPANE	0.00 mg/L		0.10 ug/L	96-18-4
1,2,4-TRIMETHYLBENZENE	1.22 mg/L		0.10 ug/L	95-63-6
1,3,5-TRIMETHYLBENZENE	1.22 mg/L		0.10 ug/L	108-67-8
1,3-DICHLOROBENZENE	0.73 mg/L		0.10 ug/L	541-73-1
1,3-DICHLOROPROPANE	0.01 mg/L		0.10 ug/L	142-28-9
2,2-DICHLOROPROPANE			0.10 ug/L	594-20-7
S-BUTYLBENZENE	0.98 mg/L		0.10 ug/L	135-98-8
T-BUTYLBENZENE	0.98 mg/L		0.10 ug/L	98-06-6
TRANS-1,3-DICHLOROPROPENE	0.01 mg/L		0.10 ug/L	10061-02-6
TRICHLOROFLUOROMETHANE	7.33 mg/L		0.10 ug/L	75-69-4
DIBROMOMETHANE	0.12 mg/L		0.10 ug/L	74-95-3
DICHLORODIFLUOROMETHANE	4.89 mg/L		0.10 ug/L	75-71-8
HEXACHLOROBUTADIENE	0.00 ug/L		0.10 ug/L	87-68-3
ISOPROPYLBENZENE	2.44 mg/L		0.10 ug/L	98-82-8

M + P XYLENE		0.10 ug/L	106-42-3
NAPHTHALENE	0.49 mg/L	0.10 ug/L	91-20-3
N-BUTYLBENZENE	0.98 mg/L	0.10 ug/L	104-51-8
N-PROPYLBENZENE	0.98 mg/L	0.10 ug/L	103-65-1

VOC REGULATED

Contaminant Name	Drinking Water Standard	PWS Rule	TCEQ Threshold	CAS Number
CHLOROBENZENE (MONOCHLOROBENZENE)	0.10 mg/L		0.10 ug/L	108-90-7
CIS-1,2-DICHLOROETHYLENE	0.07 mg/L	§290.103(3)(B)	0.10 ug/L	156-59-2
CARBON TETRACHLORIDE	0.00 mg/L	§290.103(3)(B)	0.10 ug/L	56-23-5
1,1,1-TRICHLOROETHANE	0.20 mg/L	§290.103(3)(B)	0.10 ug/L	71-55-6
1,1,2-TRICHLOROETHANE	0.01 mg/L	§290.103(3)(B)	0.10 ug/L	79-00-5
1,1-DICHLOROETHYLENE	0.01 mg/L	§290.103(3)(B)	0.10 ug/L	75-35-4
1,2,4-TRICHLOROBENZENE	0.07 mg/L	§290.103(3)(B)	0.10 ug/L	120-82-1
1,2-DICHLOROETHANE	0.01 mg/L	§290.103(3)(B)	0.10 ug/L	107-06-2
1,2-DICHLOROPROPANE	0.01 mg/L	§290.103(3)(B)	0.10 ug/L	78-87-5
BENZENE	0.01 mg/L	§290.103(3)(B)	0.10 ug/L	71-43-2
P-XYLENE		§290.103(3)(B)	0.10 ug/L	106-42-3
STYRENE	0.10 mg/L	§290.103(3)(B)	0.10 ug/L	100-42-5
TETRACHLOROETHYLENE	0.01 mg/L	§290.103(3)(B)	0.10 ug/L	127-18-4
TOLUENE	1.00 mg/L	§290.103(3)(B)	0.10 ug/L	108-88-3
TRANS-1,2-DICHLOROETHYLENE	0.10 mg/L	§290.103(3)(B)	0.10 ug/L	156-60-5
TRICHLOROETHYLENE	0.01 mg/L	§290.103(3)(B)	0.10 ug/L	79-01-6
VINYL CHLORIDE	0.00 mg/L	§290.103(3)(B)	0.10 ug/L	75-01-4
XYLENES (TOTAL)	10.00 mg/L	§290.103(3)(B)	0.10 ug/L	none
DICHLOROMETHANE	0.01 mg/L	§290.103(3)(B)	0.10 ug/L	75-09-2
ETHYLBENZENE	0.70 mg/L	§290.103(3)(B)	0.10 ug/L	100-41-4
MONOCHLOROBENZENE (CHLOROBENZENE)		§290.103(3)(B)	0.10 ug/L	108-90-7
M-XYLENE	10.00 mg/L		0.10 mg/L	108-38-3
ORTHO-1,2-DICHLOROBENZENE	0.60 mg/L	§290.103(3)(B)	0.10 ug/L	95-50-1
O-XYLENE		§290.103(3)(B)	0.10 mg/L	95-47-6
PARA-1,4-DICHLOROBENZENE	0.08 mg/L	§290.103(3)(B)	0.10 ug/L	106-46-7

Other

Contaminant Name	Drinking Water Standard	PWS Rule	TCEQ Threshold	CAS Number
CRYPTOSPORIDIUM PARVUM				
AROCLOR (PCB)			0.05 ug/L	53469-21-9
TOTAL ALPHA EMITTING RADIUM	5.00 mg/L	§290.110		
TOTAL COLIFORM				
TOTAL TRIHALOMETHANE	0.10 mg/L	§290.116	0.10 ug/L	
TRIAZINES				
ESCHERICHIA COLI				
FECAL VIRUSES				
GIARDIA LAMBLIA				
P-ALKALINITY				

Map Legend

Water System Sources

Source Type

Source Type

 Surface Water

 Ground Water

Capture Zones

Travel Time

 2 Years

 5 Years

 10 Years

 20 Years

 50 Years

 100 Years

 Other

Truncated Watersheds



Potential Sources of Contamination

Type Description

 ANIMAL FEEDING OPERATION

 BUSINESS

 CEMETERY

 CHEMICAL PIPELINE

 CHEMICAL STORAGE

 CLASS I INJECTION WELL

 CLASS II INJECTION WELL

 CLASS III INJECTION WELL

 CLASS IV INJECTION WELL

 CLASS V INJECTION WELL

 GUN RANGE

 NATURAL RESOURCE PRODUCTION

API



▲ TRANSPORTATION

▲ WASTE

▲ WASTEWATER

Susceptibility Report for System ID 0200070

System Details

Water System ID	0200070
System Name	VARNER CREEK UTILITY DISTRICT
Address	PO BOX 265 WEST COLUMBIA, TX 774860265
County	BRAZORIA
Telephone	9793452805
PWS Type	C
Total Production	0

Ground Water Sources

Source ID	Drill Date	Top Screened Interval (Ft.)	Bottom Screened Interval (Ft.)	Pumpage Rate (GPM)	Entry Point	Operational Status
G0200070A		630	650	800	001	Operational
G0200070B		560	630	800	001	Operational

Surface Water Sources

Source ID	Type	Surface Water Body	Entry Point	Operational Status
No surface water sources				

PWS System Susceptibility Summary: Contaminants with HIGH Susceptibility

The system is rated as having HIGH susceptibility to the contaminants listed below.

D.W. CONTAM. CANDIDATE LIST

Contaminant Name	Structural Integrity	Aquifer/Watershed Properties	Nonpoint Source	Point Source	Area Primary Influence	Contaminant Occurrence	Summary
BORON	----	Moderate	High	----	----	----	High
DDE	Low	Moderate	High	----	----	----	High
DIAZINON	Low	Moderate	High	----	----	----	High

INORGANICS

Contaminant Name	Structural Integrity	Aquifer/Watershed Properties	Nonpoint Source	Point Source	Area Primary Influence	Contaminant Occurrence	Summary
CHLORIDE	Low	Moderate	Moderate	----	----	High	High
CYANIDE	----	Moderate	High	----	----	----	High
MANGANESE	----	Moderate	High	----	----	----	High
TDS	Low	Moderate	High	----	----	High	High

INORGANICS MONITORED

Contaminant Name	Structural Integrity	Aquifer/Watershed Properties	Nonpoint Source	Point Source	Area Primary Influence	Contaminant Occurrence	Summary
SPECIFIC CONDUCTANCE	----	Moderate	High	----	----	----	High

INORGANICS UNREGULATED

Contaminant Name	Structural Integrity	Aquifer/Watershed Properties	Nonpoint Source	Point Source	Area Primary Influence	Contaminant Occurrence	Summary
SODIUM	Low	Moderate	High	----	----	----	High

PHYSICAL

Contaminant Name	Structural Integrity	Aquifer/Watershed Properties	Nonpoint Source	Point Source	Area Primary Influence	Contaminant Occurrence	Summary
HARDNESS	----	Moderate	High	----	----	----	High

PHYSICAL PARAMETER

Contaminant Name	Structural Integrity	Aquifer/Watershed Properties	Nonpoint Source	Point Source	Area Primary Influence	Contaminant Occurrence	Summary
pH	----	Moderate	High	----	----	----	High

SOC MONITORED

Contaminant Name	Structural Integrity	Aquifer/Watershed Properties	Nonpoint Source	Point Source	Area Primary Influence	Contaminant Occurrence	Summary
2,4,5-T	Low	Moderate	High	----	----	----	High
ALDRIN	Low	Moderate	High	----	----	----	High
DIELDRIN	Low	Moderate	High	----	----	----	High

SOC REGULATED

Contaminant Name	Structural Integrity	Aquifer/Watershed Properties	Nonpoint Source	Point Source	Area Primary Influence	Contaminant Occurrence	Summary
2,4,5-TP	Low	Moderate	High	----	----	----	High
2,4-D	Low	Moderate	High	----	----	----	High
ALACHLOR	Low	Moderate	High	----	----	----	High
ATRAZINE	Low	Moderate	High	----	----	----	High
BENZO(A)PYRENE	Low	Moderate	High	----	----	----	High
CHLORDANE	Low	Moderate	High	----	----	----	High
ENDRIN	Low	Moderate	High	----	----	----	High
GLYPHOSATE	Low	Moderate	High	----	----	----	High
PENTACHLOROPHENOL	----	Moderate	High	----	----	----	High
SIMAZINE	Low	Moderate	High	----	----	----	High

VOC - OTHER COMPOUNDS

Contaminant Name	Structural Integrity	Aquifer/Watershed Properties	Nonpoint Source	Point Source	Area Primary Influence	Contaminant Occurrence	Summary
METHYL-T-BUTYL ETHER	Low	Moderate	High	----	----	----	High

VOC MONITORED

Contaminant Name	Structural Integrity	Aquifer/Watershed Properties	Nonpoint Source	Point Source	Area Primary Influence	Contaminant Occurrence	Summary
1,3-DICHLOROBENZENE	----	Moderate	High	----	----	----	High

VOC REGULATED

Contaminant Name	Structural Integrity	Aquifer/Watershed Properties	Nonpoint Source	Point Source	Area Primary Influence	Contaminant Occurrence	Summary
1,1,2-TRICHLOROETHANE	Low	Moderate	High	----	----	----	High
BENZENE	Low	Moderate	High	----	----	----	High
CIS-1,2-DICHLOROETHYLENE	Low	Moderate	High	----	----	----	High
DICHLOROMETHANE	Low	Moderate	High	----	----	----	High
ETHYLBENZENE	Low	Moderate	High	----	----	----	High
TETRACHLOROETHYLENE	Low	Moderate	High	----	----	----	High
TOLUENE	Low	Moderate	High	----	----	----	High
TRANS-1,2-DICHLOROETHYLENE	Low	Moderate	High	----	----	----	High

TRICHLOROETHYLENE	Low	Moderate	High	----	----	----	High
VINYL CHLORIDE	Low	Moderate	High	----	----	----	High
XYLENES (TOTAL)	Low	Moderate	High	----	----	----	High

PWS System Susceptibility Summary: Contaminants with MODERATE Susceptibility

The system is rated as having MODERATE susceptibility to the contaminants listed below.

D.W. CONTAM. CANDIDATE LIST

Contaminant Name	Structural Integrity	Aquifer/Watershed Properties	Nonpoint Source	Point Source	Area Primary Influence	Contaminant Occurrence	Summary
1,2-DIPHENYLHYDRAZINE	----	Moderate	Low	----	----	----	Moderate
1,3-DICHLOROPROPENE	----	Moderate	Moderate	----	----	----	Moderate
2,4,6-TRICHLOROPHENOL	----	Moderate	Low	----	----	----	Moderate
2,4-DICHLOROPHENOL	----	Moderate	Moderate	----	----	----	Moderate
2,4-DINITROPHENOL	----	Moderate	Moderate	----	----	----	Moderate
2,4-DINITROTOLUENE	----	Moderate	Low	----	----	----	Moderate
2,6-DINITROTOLUENE	----	Moderate	Low	----	----	----	Moderate
2-METHYLPHENOL	----	Moderate	Low	----	----	----	Moderate
ACETOCHLOR	Low	Moderate	Moderate	----	----	----	Moderate
CYANAZINE	Low	Moderate	Moderate	----	----	----	Moderate
DCPA DI-ACID DEGRADATE	Low	Moderate	Moderate	----	----	----	Moderate
DCPA MONO-ACID DEGRADATE	Low	Moderate	Moderate	----	----	----	Moderate
DISULFOTON	Low	Moderate	Moderate	----	----	----	Moderate
DIURON	Low	Moderate	Moderate	----	----	----	Moderate
EPTC	Low	Moderate	Moderate	----	----	----	Moderate
FONOFOS	Low	Moderate	Moderate	----	----	----	Moderate
LINURON	Low	Moderate	Moderate	----	----	----	Moderate
MOLINATE	Low	Moderate	Moderate	----	----	----	Moderate
NITROBENZENE	----	Moderate	Low	----	----	----	Moderate
ORGANOTINS	----	Moderate	Low	----	----	----	Moderate
PERCHLORATE	----	Moderate	Low	----	----	----	Moderate
PROPAZINE	Low	Moderate	Moderate	----	----	----	Moderate
RDX	----	Moderate	Low	----	----	----	Moderate
TERBACIL	Low	Moderate	Moderate	----	----	----	Moderate
TERBUFOS	Low	Moderate	Moderate	----	----	----	Moderate

INORGANICS

Contaminant Name	Structural Integrity	Aquifer/Watershed Properties	Nonpoint Source	Point Source	Area Primary Influence	Contaminant Occurrence	Summary
ALUMINUM	----	Moderate	Low	----	----	----	Moderate
ANTIMONY	Low	Moderate	----	----	----	----	Moderate
ARSENIC	Low	Moderate	Low	----	----	----	Moderate
ASBESTOS	----	Moderate	----	----	----	----	Moderate
BARIUM	Low	Moderate	Low	----	----	----	Moderate
BERYLLIUM	----	Moderate	----	----	----	----	Moderate
BROMIDE	Low	Moderate	Moderate	----	----	----	Moderate
CADMIUM	Low	Moderate	----	----	----	----	Moderate
CHROMIUM	Low	Moderate	----	----	----	----	Moderate
COPPER	Low	Moderate	----	----	----	----	Moderate
FLUORIDE	Low	Moderate	----	----	----	----	Moderate
HYDROGEN SULFIDE	Low	Moderate	Moderate	----	----	----	Moderate
IRON	----	Moderate	Low	----	----	----	Moderate
LEAD	Low	Moderate	Low	----	----	----	Moderate
MERCURY	Low	Moderate	Low	----	----	----	Moderate
NICKEL	Low	Moderate	Low	----	----	----	Moderate
NITRATE	Low	Moderate	Low	----	----	----	Moderate
NITRATE+NITRITE	Low	Moderate	Low	----	----	----	Moderate
NITRITE	Low	Moderate	Low	----	----	----	Moderate

SELENIUM	Low	Moderate	Low	----	----	----	Moderate
SILVER	Low	Moderate	----	----	----	----	Moderate
SULFATE	Low	Moderate	Low	----	----	----	Moderate
THALLIUM	----	Moderate	Low	----	----	----	Moderate
ZINC	----	Moderate	Moderate	----	----	----	Moderate

INORGANICS MONITORED

Contaminant Name	Structural Integrity	Aquifer/Watershed Properties	Nonpoint Source	Point Source	Area Primary Influence	Contaminant Occurrence	Summary
ALKALINITY	----	Moderate	----	----	----	----	Moderate
BICARBONATE	----	Moderate	----	----	----	----	Moderate
CARBONATE	----	Moderate	----	----	----	----	Moderate
MAGNESIUM	Low	Moderate	Moderate	----	----	----	Moderate

INORGANICS UNREGULATED

Contaminant Name	Structural Integrity	Aquifer/Watershed Properties	Nonpoint Source	Point Source	Area Primary Influence	Contaminant Occurrence	Summary
CALCIUM	----	Moderate	Low	----	----	----	Moderate

RADIOCHEM

Contaminant Name	Structural Integrity	Aquifer/Watershed Properties	Nonpoint Source	Point Source	Area Primary Influence	Contaminant Occurrence	Summary
GROSS ALPHA	----	Moderate	Low	----	----	----	Moderate
GROSS BETA	----	Moderate	Low	----	----	----	Moderate
RADIUM-226	----	Moderate	Low	----	----	----	Moderate
RADIUM-228	----	Moderate	Low	----	----	----	Moderate
STRONTIUM-90	----	Moderate	Low	----	----	----	Moderate
TRITIUM	----	Moderate	Low	----	----	----	Moderate

RADIOCHEM UNREGULATED

Contaminant Name	Structural Integrity	Aquifer/Watershed Properties	Nonpoint Source	Point Source	Area Primary Influence	Contaminant Occurrence	Summary
RADON	----	Moderate	Low	----	----	----	Moderate
STRONTIUM-89	----	Moderate	Low	----	----	----	Moderate
URANIUM	----	Moderate	Low	----	----	----	Moderate

SOC MONITORED

Contaminant Name	Structural Integrity	Aquifer/Watershed Properties	Nonpoint Source	Point Source	Area Primary Influence	Contaminant Occurrence	Summary
3-HYDROXYCARBOFURAN	Low	Moderate	Moderate	----	----	----	Moderate
ACENAPHTHENE	Low	Moderate	Moderate	----	----	----	Moderate
ACENAPHTHYLENE	----	Moderate	Low	----	----	----	Moderate
ANTHRACENE	Low	Moderate	Moderate	----	----	----	Moderate
BENTAZON	Low	Moderate	Moderate	----	----	----	Moderate
BENZO[A]ANTHRACENE	Low	Moderate	Moderate	----	----	----	Moderate
BENZO[B]FLUORANTHENE	----	Moderate	Low	----	----	----	Moderate
BENZO[G,H,I]PERYLENE	----	Moderate	Low	----	----	----	Moderate
BENZO[K]FLUORANTHENE	----	Moderate	----	----	----	----	Moderate
BROMACIL	Low	Moderate	Moderate	----	----	----	Moderate
BUTACHLOR	Low	Moderate	Moderate	----	----	----	Moderate
BUTYL BENZYL PHTHALATE	----	Moderate	Low	----	----	----	Moderate
CARBARYL	Low	Moderate	Moderate	----	----	----	Moderate
CHRYSENE	Low	Moderate	Moderate	----	----	----	Moderate
DIBENZ[A,H]ANTHRACENE	Low	Moderate	Moderate	----	----	----	Moderate
DICAMBA	Low	Moderate	Moderate	----	----	----	Moderate
DIETHYL PHTHALATE	Low	Moderate	Moderate	----	----	----	Moderate

DIMETHYL PHTHALATE	Low	Moderate	Moderate	----	----	----	Moderate
DI-N-BUTYL PHTHALATE	----	Moderate	Low	----	----	----	Moderate
FLUORENE	Low	Moderate	Moderate	----	----	----	Moderate
INDENO[1,2,3,CD]PYRENE	----	Moderate	----	----	----	----	Moderate
LAMBAST	Low	Moderate	Moderate	----	----	----	Moderate
METHIOCARB	Low	Moderate	Moderate	----	----	----	Moderate
METHOMYL	Low	Moderate	Moderate	----	----	----	Moderate
METOLACHLOR	Low	Moderate	Moderate	----	----	----	Moderate
METRIBUZIN	Low	Moderate	Moderate	----	----	----	Moderate
PHENANTHRENE	----	Moderate	Low	----	----	----	Moderate
PROMETON	Low	Moderate	Moderate	----	----	----	Moderate
PROPACHLOR	Low	Moderate	Moderate	----	----	----	Moderate
PYRENE	Low	Moderate	Moderate	----	----	----	Moderate
TRIFLURALIN	Low	Moderate	Moderate	----	----	----	Moderate

SOC REGULATED

Contaminant Name	Structural Integrity	Aquifer/Watershed Properties	Nonpoint Source	Point Source	Area Primary Influence	Contaminant Occurrence	Summary
2,3,7,8-TCDD	----	Moderate	----	----	----	----	Moderate
ALDICARB	Low	Moderate	Moderate	----	----	----	Moderate
ALDICARB SULFONE	Low	Moderate	Moderate	----	----	----	Moderate
ALDICARB SULFOXIDE	Low	Moderate	Moderate	----	----	----	Moderate
CARBOFURAN	Low	Moderate	Moderate	----	----	----	Moderate
CHLORDANE (ALPHA-CHLORDANE)	Low	Moderate	Moderate	----	----	----	Moderate
CHLORDANE (GAMMA-CHLORDANE)	Low	Moderate	Moderate	----	----	----	Moderate
CHLORDANE (TRANS-NONACHLOR)	Low	Moderate	Moderate	----	----	----	Moderate
DALAPON	Low	Moderate	Moderate	----	----	----	Moderate
DI-(2-ETHYLHEXYL)ADIPATE	Low	Moderate	Moderate	----	----	----	Moderate
DI-(2-ETHYLHEXYL)PHTHALATE	Low	Moderate	Moderate	----	----	----	Moderate
DIBROMOCHLOROPROPANE	----	Moderate	Moderate	----	----	----	Moderate
DINOSEB	Low	Moderate	Moderate	----	----	----	Moderate
DIQUAT	Low	Moderate	Moderate	----	----	----	Moderate
ENDOTHALL	Low	Moderate	Moderate	----	----	----	Moderate
ETHYLENE DIBROMIDE	----	Moderate	----	----	----	----	Moderate
HEPTACHLOR	Low	Moderate	Moderate	----	----	----	Moderate
HEPTACHLOR EPOXIDE	Low	Moderate	Moderate	----	----	----	Moderate
HEXACHLOROBENZENE	----	Moderate	Moderate	----	----	----	Moderate
HEXACHLOROCYCLOPENTADIENE	----	Moderate	Moderate	----	----	----	Moderate
LINDANE	Low	Moderate	Moderate	----	----	----	Moderate
METHOXYCHLOR	Low	Moderate	Moderate	----	----	----	Moderate
OXAMYL	Low	Moderate	Moderate	----	----	----	Moderate
PCBs	----	Moderate	Low	----	----	----	Moderate
PICLORAM	Low	Moderate	Moderate	----	----	----	Moderate
TOXAPHENE	Low	Moderate	Moderate	----	----	----	Moderate

THM

Contaminant Name	Structural Integrity	Aquifer/Watershed Properties	Nonpoint Source	Point Source	Area Primary Influence	Contaminant Occurrence	Summary
BROMOCHLOROMETHANE	----	Moderate	----	----	----	----	Moderate
BROMODICHLOROMETHANE	Low	Moderate	----	----	----	----	Moderate
BROMOFORM	Low	Moderate	Low	----	----	----	Moderate
BROMOMETHANE	----	Moderate	Moderate	----	----	----	Moderate
CHLOROFORM	Low	Moderate	Moderate	----	----	----	Moderate
DIBROMOCHLOROMETHANE	----	Moderate	----	----	----	----	Moderate

VOC - OTHER COMPOUNDS

Contaminant Name	Structural Integrity	Aquifer/Watershed Properties	Nonpoint Source	Point Source	Area Primary Influence	Contaminant Occurrence	Summary
2-HEXANONE	----	Moderate	Low	----	----	----	Moderate
4-METHYL-2-PENTANONE (MIBK)	----	Moderate	Low	----	----	----	Moderate
ACETONE	Low	Moderate	Low	----	----	----	Moderate
ACRYLONITRILE	----	Moderate	Low	----	----	----	Moderate
CARBON DISULFIDE	----	Moderate	Moderate	----	----	----	Moderate
ETHYL METHACRYLATE	----	Moderate	Low	----	----	----	Moderate
METHYL IODIDE (IODOMETHANE)	----	Moderate	Moderate	----	----	----	Moderate
METHYL ETHYL KETONE	----	Moderate	Low	----	----	----	Moderate
METHYL METHACRYLATE	----	Moderate	Low	----	----	----	Moderate
TETRAHYDROFURAN	----	Moderate	Low	----	----	----	Moderate
VINYL ACETATE	----	Moderate	Low	----	----	----	Moderate

VOC MONITORED

Contaminant Name	Structural Integrity	Aquifer/Watershed Properties	Nonpoint Source	Point Source	Area Primary Influence	Contaminant Occurrence	Summary
1,1,1,2-TETRACHLOROETHANE	----	Moderate	Low	----	----	----	Moderate
1,1,2,2-TETRACHLOROETHANE	Low	Moderate	Moderate	----	----	----	Moderate
1,1-DICHLOROETHANE	----	Moderate	Low	----	----	----	Moderate
1,1-DICHLOROPROPENE	----	Moderate	Low	----	----	----	Moderate
1,2,3-TRICHLOROBENZENE	----	Moderate	Low	----	----	----	Moderate
1,2,3-TRICHLOROPROPANE	----	Moderate	Low	----	----	----	Moderate
1,2,4-TRIMETHYLBENZENE	Low	Moderate	Moderate	----	----	----	Moderate
1,3,5-TRIMETHYLBENZENE	Low	Moderate	Moderate	----	----	----	Moderate
1,3-DICHLOROPROPANE	----	Moderate	Moderate	----	----	----	Moderate
2,2-DICHLOROPROPANE	----	Moderate	----	----	----	----	Moderate
2-CHLOROTOLUENE	Low	Moderate	Moderate	----	----	----	Moderate
4-CHLOROTOLUENE	----	Moderate	Low	----	----	----	Moderate
4-ISOPROPYLTOLUENE	Low	Moderate	Moderate	----	----	----	Moderate
BROMOBENZENE	----	Moderate	----	----	----	----	Moderate
CHLOROETHANE	Low	Moderate	Moderate	----	----	----	Moderate
CHLOROMETHANE	----	Moderate	Low	----	----	----	Moderate
CIS-1,3-DICHLOROPROPENE	----	Moderate	Moderate	----	----	----	Moderate
DIBROMOMETHANE	----	Moderate	Low	----	----	----	Moderate
DICHLORODIFLUOROMETHANE	Low	Moderate	Moderate	----	----	----	Moderate
HEXACHLOROBUTADIENE	----	Moderate	Low	----	----	----	Moderate
ISOPROPYLBENZENE	Low	Moderate	Moderate	----	----	----	Moderate
M + P XYLENE	Low	Moderate	Moderate	----	----	----	Moderate
NAPHTHALENE	Low	Moderate	Moderate	----	----	----	Moderate
N-BUTYLBENZENE	Low	Moderate	Moderate	----	----	----	Moderate
N-PROPYLBENZENE	Low	Moderate	Moderate	----	----	----	Moderate
S-BUTYLBENZENE	Low	Moderate	Moderate	----	----	----	Moderate
T-BUTYLBENZENE	Low	Moderate	Moderate	----	----	----	Moderate
TRANS-1,3-DICHLOROPROPENE	----	Moderate	Moderate	----	----	----	Moderate
TRICHLOROFUOROMETHANE	Low	Moderate	Moderate	----	----	----	Moderate

VOC REGULATED

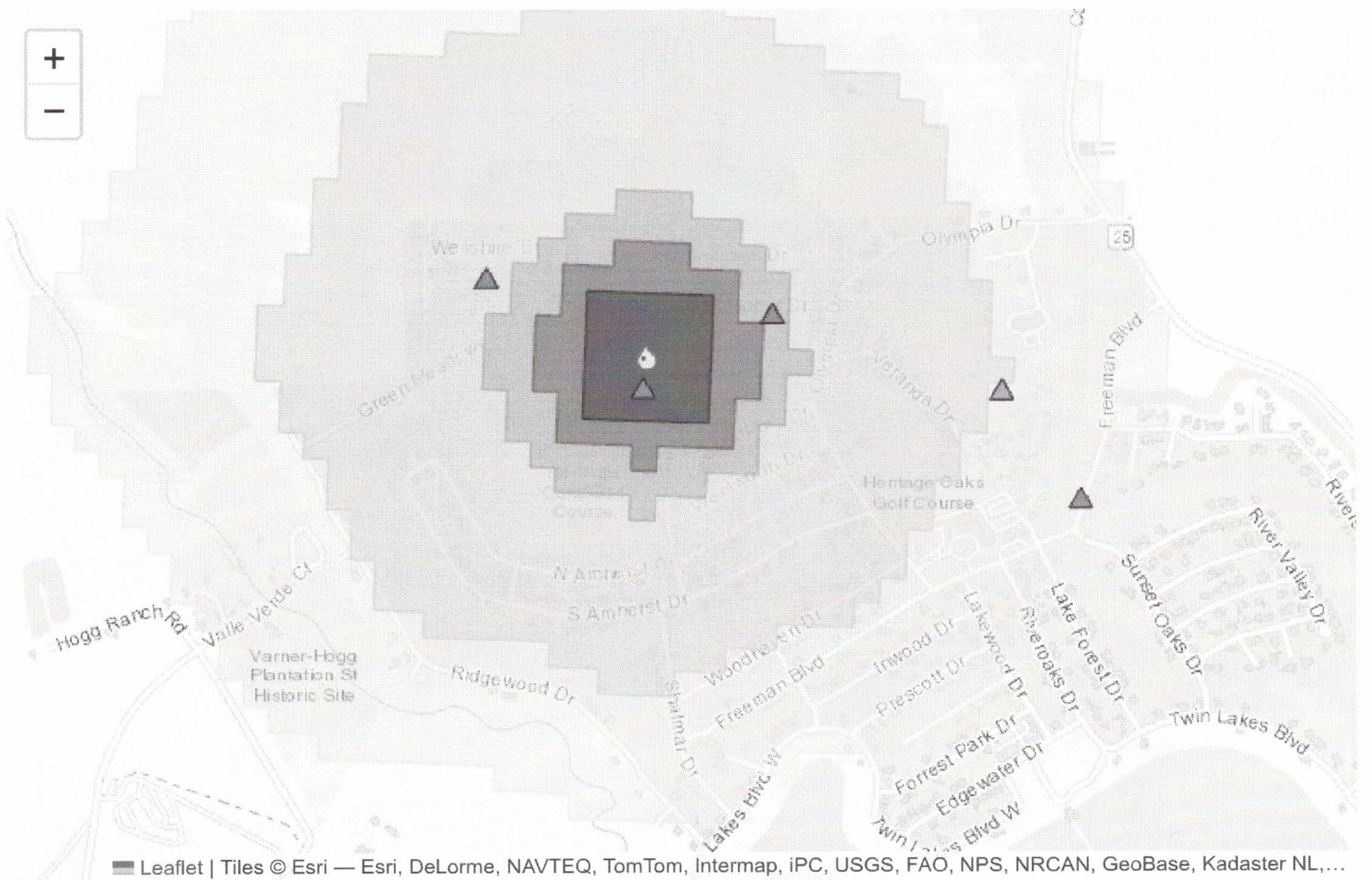
Contaminant Name	Structural Integrity	Aquifer/Watershed Properties	Nonpoint Source	Point Source	Area Primary Influence	Contaminant Occurrence	Summary
1,1,1-TRICHLOROETHANE	Low	Moderate	Moderate	----	----	----	Moderate
1,1-DICHLOROETHYLENE	Low	Moderate	Moderate	----	----	----	Moderate
1,2,4-TRICHLOROBENZENE	----	Moderate	Moderate	----	----	----	Moderate
1,2-DICHLOROETHANE	----	Moderate	Moderate	----	----	----	Moderate
1,2-DICHLOROPROPANE	Low	Moderate	Moderate	----	----	----	Moderate
CARBON TETRACHLORIDE	Low	Moderate	Moderate	----	----	----	Moderate

CHLOROBENZENE (MONOCHLOROBENZENE)	Low	Moderate	Moderate	----	----	----	Moderate
MONOCHLOROBENZENE (CHLOROBENZENE)	----	Moderate	Low	----	----	----	Moderate
M-XYLENE	Low	Moderate	Moderate	----	----	----	Moderate
ORTHO-1,2-DICHLOROBENZENE	Low	Moderate	Moderate	----	----	----	Moderate
O-XYLENE	Low	Moderate	Moderate	----	----	----	Moderate
PARA-1,4-DICHLOROBENZENE	Low	Moderate	Moderate	----	----	----	Moderate
P-XYLENE	Low	Moderate	Moderate	----	----	----	Moderate
STYRENE	----	Moderate	Low	----	----	----	Moderate

Other

Contaminant Name	Structural Integrity	Aquifer/Watershed Properties	Nonpoint Source	Point Source	Area Primary Influence	Contaminant Occurrence	Summary
AROCLOR (PCB)	Low	Moderate	Moderate	----	----	----	Moderate
CRYPTOSPORIDIUM PARVUM	----	Moderate	Moderate	----	----	----	Moderate
ESCHERICHIA COLI	----	Moderate	Moderate	----	----	----	Moderate
FECAL VIRUSES	----	Moderate	Moderate	----	----	----	Moderate
GIARDIA LAMBLIA	----	Moderate	Moderate	----	----	----	Moderate
P-ALKALINITY	----	Moderate	----	----	----	----	Moderate
TOTAL ALPHA EMITTING RADIUM	----	Moderate	Low	----	----	----	Moderate
TOTAL COLIFORM	----	Moderate	Moderate	----	----	----	Moderate
TOTAL TRIHALOMETHANE TRIAZINES	Low	Moderate	Moderate	----	----	----	Moderate

Source Details: G0200070A



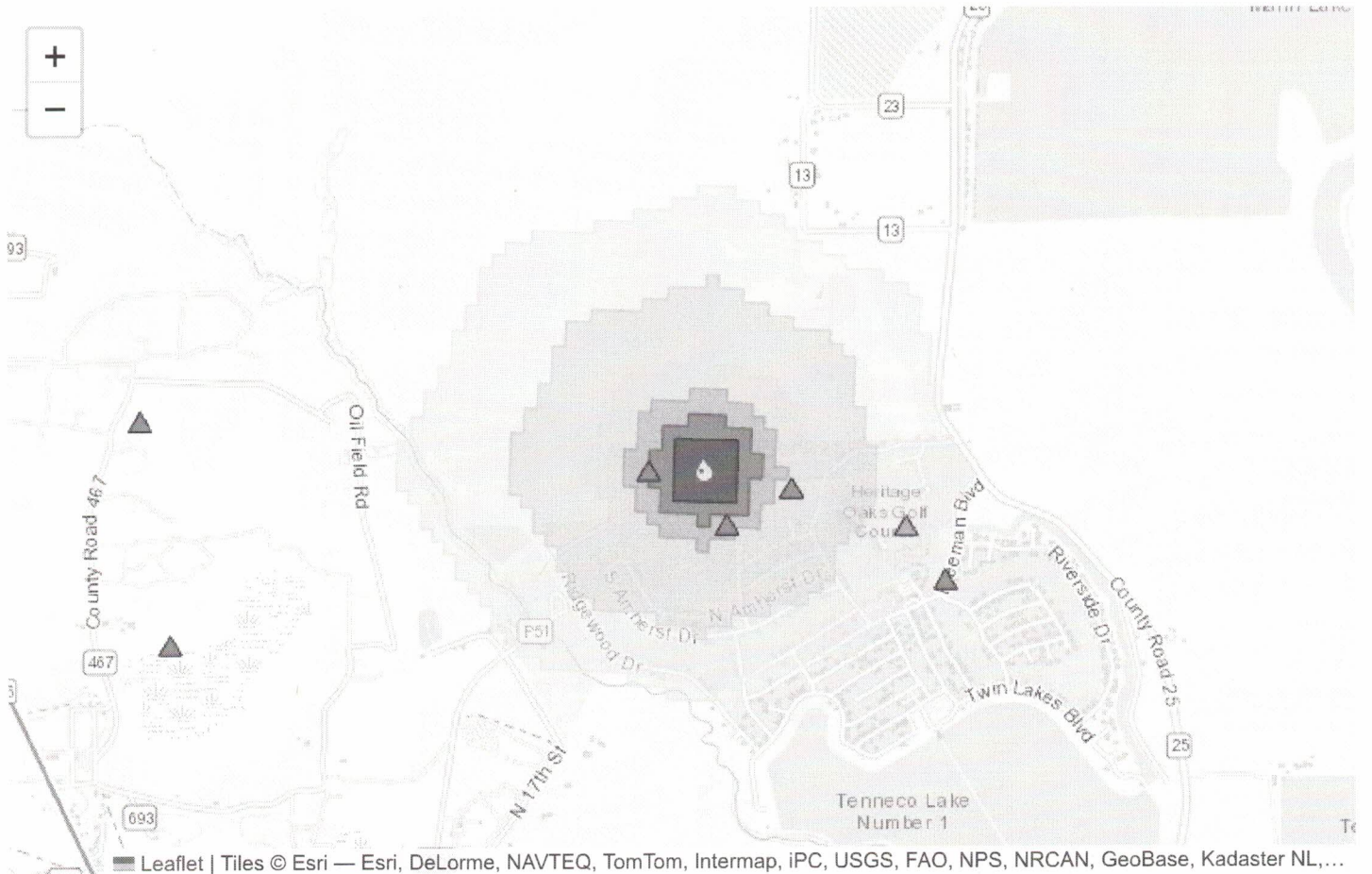
Contaminants with HIGH Susceptibility

No contaminants with high susceptibility.

Contaminants with MODERATE Susceptibility

No contaminants with moderate susceptibility.

Source Details: G0200070B



Leaflet | Tiles © Esri — Esri, DeLorme, NAVTEQ, TomTom, Intermap, iPC, USGS, FAO, NPS, NRCAN, GeoBase, Kadaster NL,...

Contaminants with HIGH Susceptibility

No contaminants with high susceptibility.

Contaminants with MODERATE Susceptibility

No contaminants with moderate susceptibility.

Contaminant List

List of regulated and unregulated assessed contaminants grouped by contaminant class. TCEQ Chapter 290 Subchapter F rules are cited for each drinking water standard (secondary drinking water standards are italicized). The TCEQ threshold limit is the concentration used within the contaminant occurrence component to determine if a detection of the chemical was found during water quality monitoring activities. The chemical abstract service (CAS) number is a unique identifier for each chemical.

D.W. CONTAM. CANDIDATE LIST

Contaminant Name	Drinking Water Standard	PWS Rule	TCEQ Threshold	CAS Number
CYANAZINE			0.01 ug/L	21725-46-2
DCPA DI-ACID DEGRADATE			0.00 ug/L	2136-79-0
BORON	2.20 mg/L		10.00 ug/L	11113-50-1
2,4,6-TRICHLOROPHENOL	0.08 mg/L		20.00 ug/L	88-06-2
2,4-DICHLOROPHENOL	0.07 mg/L		20.00 ug/L	120-83-2
2,4-DINITROPHENOL	0.05 mg/L		20.00 ug/L	51-28-5
2,4-DINITROTOLUENE	0.00 mg/L		5.00 ug/L	121-14-2
2,6-DINITROTOLUENE	0.00 mg/L		5.00 ug/L	606-20-2
2-METHYLPHENOL	0.05 mg/L		5.00 ug/L	95-48-7
ACETOCHLOR			0.01 ug/L	34256-82-1
1,2-DIPHENYLHYDRAZINE	0.00 mg/L		0.10 ug/L	122-66-7
1,3-DICHLOROPROPENE	0.01 mg/L		0.10 ug/L	542-75-6
PROPAZINE			0.01 ug/L	139-40-2
RDX	0.01 mg/L		0.10 ug/L	121-82-4
TERBACIL			0.01 ug/L	5902-51-2
TERBUFOS			0.01 ug/L	13071-79-9
DCPA MONO-ACID DEGRADATE			0.00 ug/L	887-54-7
DDE	0.00 mg/L		0.01 ug/L	72-55-9
DIAZINON	0.02 mg/L		0.01 ug/L	333-41-5
DISULFOTON	0.00 mg/L		0.01 ug/L	298-04-4
DIURON	0.05 mg/L		0.05 ug/L	330-54-1
EPTC	0.61 mg/L		0.01 ug/L	759-94-4
FONOFOS			0.01 ug/L	944-22-9
LINURON			0.01 ug/L	330-55-2
MOLINATE	0.05 mg/L		0.01 ug/L	2212-67-1
NITROBENZENE	0.01 mg/L		0.10 ug/L	98-95-3
ORGANOTINS				
PERCHLORATE				14797-73-0

INORGANICS

Contaminant Name	Drinking Water Standard	PWS Rule	TCEQ Threshold	CAS Number
CHLORIDE		§290.113	125.00 mg/L	16887-00-6
CHROMIUM	0.10 mg/L	§290.103(1)	50.00 ug/L	11104-59-9
COPPER	1.30 mg/L	§290.120	65.00 ug/L	17493-86-6
CYANIDE	0.20 mg/L	§290.103(1)	0.01 mg/L	57-12-5
BERYLLIUM	0.00 mg/L	§290.103(1)	2.00 ug/L	14701-08-7
BROMIDE				
CADMIUM	0.01 mg/L	§290.103(1)	2.50 ug/L	22537-48-0
ALUMINUM	24.44 mg/L	§290.113	0.10 ug/L	14903-36-7
ANTIMONY	0.01 mg/L	§290.103(1)	3.00 ug/L	64924-52-3
ARSENIC	0.05 mg/L	§290.103(1)	10.00 ug/L	15584-04-0
ASBESTOS	7.00 mg/L		-9,999.00 ug/L	1332-21-4
BARIUM	2.00 mg/L	§290.103(1)	1,000.00 ug/L	16541-35-8
SELENIUM	0.05 mg/L	§290.103(1)	25.00 ug/L	7782-49-2
SILVER	0.12 mg/L	§290.113	25.00 ug/L	14701-21-4
SULFATE	500.00 mg/L	§290.113	125.00 mg/L	14808-79-8
TDS		§290.113	250.00 mg/L	
THALLIUM	0.00 mg/L	§290.103(1)	1.00 ug/L	7440-28-0
ZINC	7.33 mg/L	§290.113	2.50 ug/L	15176-26-8
FLUORIDE	4.00 mg/L	§290.103(1)	2.00 mg/L	16984-48-8
HYDROGEN SULFIDE		§290.113	0.00 mg/L	15035-72-0

IRON		\$290.113	150.00 ug/L	15438-31-0
LEAD	0.02 mg/L	\$290.120	0.00 ug/L	14701-27-0
MANGANESE	1.15 mg/L	\$290.113	25.00 ug/L	14333-14-3
MERCURY	0.00 mg/L	\$290.103(1)	1.00 ug/L	14302-87-5
NICKEL	0.49 mg/L	\$290.103(1)	50.00 ug/L	14701-22-5
NITRATE	10.00 mg/L	\$290.103(1)	3.00 mg/L	14797-55-8
NITRATE+NITRITE	10.00 mg/L	\$290.103(1)	3.00 mg/L	none
NITRITE	1.00 mg/L	\$290.103(1)	0.50 mg/L	14797-65-0

INORGANICS MONITORED

Contaminant Name	Drinking Water Standard	PWS Rule	TCEQ Threshold	CAS Number
CARBONATE			1.00 mg/L	3812-32-6
BICARBONATE			1.00 mg/L	71-52-3
ALKALINITY			1.00 mg/L	
SPECIFIC CONDUCTANCE			1.00 uS/cm	
MAGNESIUM			0.01 mg/L	14581-92-1

INORGANICS UNREGULATED

Contaminant Name	Drinking Water Standard	PWS Rule	TCEQ Threshold	CAS Number
CALCIUM			0.02 mg/L	14102-48-8
SODIUM			0.20 mg/L	17341-25-2

PHYSICAL

Contaminant Name	Drinking Water Standard	PWS Rule	TCEQ Threshold	CAS Number
HARDNESS			1.00 mg/L	

PHYSICAL PARAMETER

Contaminant Name	Drinking Water Standard	PWS Rule	TCEQ Threshold	CAS Number
pH		\$290.113	0.10 pH	

RADIOCHEM

Contaminant Name	Drinking Water Standard	PWS Rule	TCEQ Threshold	CAS Number
RADIUM-226	5.00 mg/L	\$290.110	1.00 pCi/L	13982-63-3
RADIUM-228	5.00 mg/L	\$290.110	0.50 pCi/L	15262-20-1
STRONTIUM-90		\$290.110	0.50 pCi/L	10098-97-2
TRITIUM		\$290.110	1.00 pCi/L	15086-10-9
GROSS ALPHA	15.00 mg/L	\$290.110	3.00 pCi/L	
GROSS BETA	4.00 mg/L	\$290.110	3.00 pCi/L	

RADIOCHEM UNREGULATED

Contaminant Name	Drinking Water Standard	PWS Rule	TCEQ Threshold	CAS Number
RADON	300.00 mg/L		0.50 pCi/L	10043-92-2
STRONTIUM-89			0.50 pCi/L	14701-18-9
URANIUM	0.02 mg/L		1.00 ug/L	none

SOC MONITORED

Contaminant Name	Drinking Water Standard	PWS Rule	TCEQ Threshold	CAS Number
CHRYSENE	0.13 mg/L		0.10 ug/L	218-01-9
BENZO[B]FLUORANTHENE	0.00 mg/L		10.00 ug/L	205-99-2
BENZO[G,H,I]PERYLENE	0.73 mg/L		10.00 ug/L	191-24-2
BENZO[K]FLUORANTHENE	0.01 ug/L		10.00 ug/L	207-08-9
BROMACIL			0.05 ug/L	314-40-9
BUTACHLOR			0.05 ug/L	23184-66-9
BUTYL BENZYL PHTHALATE	4.89 mg/L		5.00 ug/L	85-68-7

CARBARYL	2.44 mg/L	0.01 ug/L	63-25-2
2,4,5-T	0.24 mg/L	0.05 ug/L	93-76-5
3-HYDROXYCARBOFURAN		0.05 ug/L	16655-82-6
ACENAPHTHENE	1.47 mg/L	5.00 ug/L	83-32-9
ACENAPHTHYLENE	1.47 mg/L	5.00 ug/L	208-96-8
ALDRIN	0.00 mg/L	0.10 ug/L	309-00-2
ANTHRACENE	7.33 mg/L	5.00 ug/L	120-12-7
BENTAZON		0.05 ug/L	25057-89-0
BENZO[A]ANTHRACENE	0.00 mg/L	10.00 ug/L	56-55-3
PHENANTHRENE		5.00 ug/L	85-01-8
PROMETON		0.01 ug/L	1610-18-0
PROPACHLOR		0.01 ug/L	1918-16-7
PYRENE	0.73 mg/L	0.10 ug/L	129-00-0
TRIFLURALIN	0.12 mg/L	0.01 ug/L	1582-09-8
DIBENZ[A,H]ANTHRACENE	0.00 mg/L	10.00 ug/L	53-70-3
DICAMBA	0.73 mg/L	0.05 ug/L	1918-00-9
DIELDRIN	0.00 mg/L	0.01 ug/L	60-57-1
DIETHYL PHTHALATE	19.55 mg/L	5.00 ug/L	84-66-2
DIMETHYL PHTHALATE	19.55 mg/L	5.00 ug/L	131-11-3
DI-N-BUTYL PHTHALATE	2.44 mg/L	5.00 ug/L	84-74-2
FLUORENE	0.98 mg/L	0.10 ug/L	86-73-7
INDENO[1,2,3,CD]PYRENE		10.00 ug/L	193-39-5
LAMBAST		0.05 ug/L	845-52-3
METHIOCARB		0.05 ug/L	2032-65-7
METHOMYL	0.61 mg/L	0.05 ug/L	16752-77-5
METOLACHLOR	3.67 mg/L	0.01 ug/L	51218-45-2
METRIBUZIN		0.01 ug/L	21087-64-9

SOC REGULATED

Contaminant Name	Drinking Water Standard	PWS Rule	TCEQ Threshold	CAS Number
CHLORDANE	0.00 mg/L	\$290.103(3)(A)	0.10 ug/L	57-74-9
CHLORDANE (ALPHA-CHLORDANE)	0.00 mg/L	\$290.103(3)(A)	0.10 ug/L	5103-71-9
CHLORDANE (GAMMA-CHLORDANE)	0.00 mg/L	\$290.103(3)(A)	0.10 ug/L	12789-03-6
CHLORDANE (TRANS-NONACHLOR)	0.00 mg/L	\$290.103(3)(A)	0.10 ug/L	39765-80-5
DALAPON	0.20 mg/L	\$290.103(3)(A)	0.05 mg/L	75-99-0
CARBOFURAN	0.04 mg/L	\$290.103(3)(A)	0.01 ug/L	1563-66-2
2,3,7,8-TCDD	0.00 mg/L	\$290.103(3)(A)	0.10 mg/L	1746-01-6
2,4,5-TP	0.05 mg/L	\$290.103(3)(A)	0.05 ug/L	93-72-1
2,4-D	0.07 mg/L	\$290.103(3)(A)	0.15 ug/L	94-75-7
ALACHLOR	0.00 mg/L	\$290.103(3)(A)	0.01 ug/L	15972-60-8
ALDICARB	0.01 mg/L	\$290.103(3)(A)	0.55 ug/L	116-06-3
ALDICARB SULFONE	0.01 mg/L	\$290.103(3)(A)	0.10 ug/L	1646-88-4
ALDICARB SULFOXIDE	0.01 mg/L	\$290.103(3)(A)	0.05 ug/L	1646-87-3
ATRAZINE	0.00 mg/L	\$290.103(3)(A)	0.01 ug/L	1912-24-9
BENZO(A)PYRENE	0.00 mg/L	\$290.103(3)(A)	10.00 ug/L	50-32-8
PICLORAM	0.50 mg/L	\$290.103(3)(A)	0.05 ug/L	1918-02-1
SIMAZINE	0.00 mg/L		0.01 ug/L	122-34-9
TOXAPHENE	0.00 mg/L	\$290.103(3)(A)	2.00 ug/L	8001-35-2
DI-(2-ETHYLHEXYL)ADIPATE	0.40 mg/L	\$290.103(3)(A)	5.00 ug/L	103-23-1
DI-(2-ETHYLHEXYL)PHTHALATE	0.01 mg/L	\$290.103(3)(A)	5.00 ug/L	117-81-7
DIBROMOCHLOROPROPANE	0.00 mg/L	\$290.103(3)(A)	0.10 ug/L	67708-83-2
DINOSEB	0.01 mg/L	\$290.103(3)(A)	0.05 ug/L	88-85-7
DIQUAT	0.02 mg/L	\$290.103(3)(A)	0.05 mg/L	2764-72-9
ENDOTHALL	0.10 mg/L	\$290.103(3)(A)	0.05 ug/L	145-73-3
ENDRIN	0.00 mg/L	\$290.103(3)(A)	0.05 ug/L	72-20-8
ETHYLENE DIBROMIDE	0.00 mg/L	\$290.103(3)(A)	0.10 ug/L	106-93-4
GLYPHOSATE	0.70 mg/L	\$290.103(3)(A)	0.05 ug/L	1071-83-6
HEPTACHLOR	0.00 mg/L	\$290.103(3)(A)	0.10 ug/L	76-44-8
HEPTACHLOR EPOXIDE	0.00 mg/L	\$290.103(3)(A)	0.10 ug/L	1024-57-3
HEXACHLOROBENZENE	0.00 mg/L	\$290.103(3)(A)	5.00 ug/L	118-74-1
HEXACHLOROCYCLOPENTADIENE	0.05 mg/L	\$290.103(3)(A)	5.00 ug/L	77-47-4

LINDANE	0.00 mg/L	§290.103(3)(A)	0.01 ug/L	58-89-9
METHOXYCHLOR	0.04 mg/L	§290.103(3)(A)	0.05 ug/L	72-43-5
OXAMYL	0.20 mg/L	§290.103(3)(A)	0.05 ug/L	23135-22-0
PCBs	0.00 mg/L	§290.103(3)(A)	0.10 ug/L	53469-21-9
PENTACHLOROPHENOL	0.00 mg/L	§290.103(3)(A)	30.00 ug/L	87-86-5

THM

Contaminant Name	Drinking Water Standard	PWS Rule	TCEQ Threshold	CAS Number
CHLOROFORM	0.10 mg/L	§290.116	0.10 ug/L	67-66-3
BROMOCHLOROMETHANE	0.98 mg/L		0.10 ug/L	74-97-5
BROMODICHLOROMETHANE	0.10 mg/L	§290.116	0.10 ug/L	75-27-4
BROMOFORM	0.10 mg/L	§290.116	0.10 ug/L	75-25-2
BROMOMETHANE	0.03 mg/L		0.10 ug/L	74-83-9
DIBROMOCHLOROMETHANE	0.10 mg/L	§290.116	0.10 ug/L	124-48-1

VOC - OTHER COMPOUNDS

Contaminant Name	Drinking Water Standard	PWS Rule	TCEQ Threshold	CAS Number
CARBON DISULFIDE	2.44 mg/L		0.10 ug/L	75-15-0
2-HEXANONE	1.47 mg/L		0.10 ug/L	591-78-6
4-METHYL-2-PENTANONE (MIBK)	1.96 mg/L		0.10 ug/L	108-10-1
ACETONE	2.44 mg/L		0.10 ug/L	67-64-1
ACRYLONITRILE	0.00 mg/L		0.10 ug/L	107-13-1
TETRAHYDROFURAN	0.12 mg/L		0.10 ug/L	109-99-9
VINYL ACETATE	24.44 mg/L		0.10 ug/L	108-05-4
ETHYL METHACRYLATE	2.20 mg/L		0.10 ug/L	97-63-2
METHYL IODIDE (IODOMETHANE)	0.03 mg/L		0.10 ug/L	74-88-4
METHYL ETHYL KETONE	14.67 mg/L		0.10 ug/L	78-93-3
METHYL METHACRYLATE	34.22 mg/L		0.10 ug/L	80-62-6
METHYL-T-BUTYL ETHER	0.24 mg/L		0.10 ug/L	1634-04-4

VOC MONITORED

Contaminant Name	Drinking Water Standard	PWS Rule	TCEQ Threshold	CAS Number
CHLOROETHANE	9.78 mg/L		0.10 ug/L	75-00-3
CHLOROMETHANE	0.07 mg/L		0.10 ug/L	74-87-3
CIS-1,3-DICHLOROPROPENE	0.00 mg/L		0.10 ug/L	10061-01-5
BROMOBENZENE	0.49 mg/L		0.10 ug/L	108-86-1
2-CHLOROTOLUENE	0.49 mg/L		0.10 ug/L	95-49-8
4-CHLOROTOLUENE	0.49 mg/L		0.10 ug/L	106-43-4
4-ISOPROPYLTOLUENE	2.44 mg/L		0.10 ug/L	99-87-6
1,1,1,2-TETRACHLOROETHANE	0.04 mg/L		0.10 ug/L	630-20-6
1,1,2,2-TETRACHLOROETHANE	0.17 mg/L		0.10 ug/L	79-34-5
1,1-DICHLOROETHANE	2.44 mg/L		0.10 ug/L	75-34-3
1,1-DICHLOROPROPENE	0.01 mg/L		0.10 ug/L	563-58-6
1,2,3-TRICHLOROBENZENE	0.07 mg/L		0.10 ug/L	87-61-6
1,2,3-TRICHLOROPROPANE	0.00 mg/L		0.10 ug/L	96-18-4
1,2,4-TRIMETHYLBENZENE	1.22 mg/L		0.10 ug/L	95-63-6
1,3,5-TRIMETHYLBENZENE	1.22 mg/L		0.10 ug/L	108-67-8
1,3-DICHLOROBENZENE	0.73 mg/L		0.10 ug/L	541-73-1
1,3-DICHLOROPROPANE	0.01 mg/L		0.10 ug/L	142-28-9
2,2-DICHLOROPROPANE			0.10 ug/L	594-20-7
S-BUTYLBENZENE	0.98 mg/L		0.10 ug/L	135-98-8
T-BUTYLBENZENE	0.98 mg/L		0.10 ug/L	98-06-6
TRANS-1,3-DICHLOROPROPENE	0.01 mg/L		0.10 ug/L	10061-02-6
TRICHLOROFLUOROMETHANE	7.33 mg/L		0.10 ug/L	75-69-4
DIBROMOMETHANE	0.12 mg/L		0.10 ug/L	74-95-3
DICHLORODIFLUOROMETHANE	4.89 mg/L		0.10 ug/L	75-71-8
HEXACHLOROBUTADIENE	0.00 µg/L		0.10 ug/L	87-68-3
ISOPROPYLBENZENE	2.44 mg/L		0.10 ug/L	98-82-8

M + P XYLENE		0.10 ug/L	106-42-3
NAPHTHALENE	0.49 mg/L	0.10 ug/L	91-20-3
N-BUTYLBENZENE	0.98 mg/L	0.10 ug/L	104-51-8
N-PROPYLBENZENE	0.98 mg/L	0.10 ug/L	103-65-1

VOC REGULATED

Contaminant Name	Drinking Water Standard	PWS Rule	TCEQ Threshold	CAS Number
CHLOROBENZENE (MONOCHLOROBENZENE)	0.10 mg/L		0.10 ug/L	108-90-7
CIS-1,2-DICHLOROETHYLENE	0.07 mg/L	§290.103(3)(B)	0.10 ug/L	156-59-2
CARBON TETRACHLORIDE	0.00 mg/L	§290.103(3)(B)	0.10 ug/L	56-23-5
1,1,1-TRICHLOROETHANE	0.20 mg/L	§290.103(3)(B)	0.10 ug/L	71-55-6
1,1,2-TRICHLOROETHANE	0.01 mg/L	§290.103(3)(B)	0.10 ug/L	79-00-5
1,1-DICHLOROETHYLENE	0.01 mg/L	§290.103(3)(B)	0.10 ug/L	75-35-4
1,2,4-TRICHLOROBENZENE	0.07 mg/L	§290.103(3)(B)	0.10 ug/L	120-82-1
1,2-DICHLOROETHANE	0.01 mg/L	§290.103(3)(B)	0.10 ug/L	107-06-2
1,2-DICHLOROPROPANE	0.01 mg/L	§290.103(3)(B)	0.10 ug/L	78-87-5
BENZENE	0.01 mg/L	§290.103(3)(B)	0.10 ug/L	71-43-2
P-XYLENE		§290.103(3)(B)	0.10 ug/L	106-42-3
STYRENE	0.10 mg/L	§290.103(3)(B)	0.10 ug/L	100-42-5
TETRACHLOROETHYLENE	0.01 mg/L	§290.103(3)(B)	0.10 ug/L	127-18-4
TOLUENE	1.00 mg/L	§290.103(3)(B)	0.10 ug/L	108-88-3
TRANS-1,2-DICHLOROETHYLENE	0.10 mg/L	§290.103(3)(B)	0.10 ug/L	156-60-5
TRICHLOROETHYLENE	0.01 mg/L	§290.103(3)(B)	0.10 ug/L	79-01-6
VINYL CHLORIDE	0.00 mg/L	§290.103(3)(B)	0.10 ug/L	75-01-4
XYLENES (TOTAL)	10.00 mg/L	§290.103(3)(B)	0.10 ug/L	none
DICHLOROMETHANE	0.01 mg/L	§290.103(3)(B)	0.10 ug/L	75-09-2
ETHYLBENZENE	0.70 mg/L	§290.103(3)(B)	0.10 ug/L	100-41-4
MONOCHLOROBENZENE (CHLOROBENZENE)		§290.103(3)(B)	0.10 ug/L	108-90-7
M-XYLENE	10.00 mg/L		0.10 mg/L	108-38-3
ORTHO-1,2-DICHLOROBENZENE	0.60 mg/L	§290.103(3)(B)	0.10 ug/L	95-50-1
O-XYLENE		§290.103(3)(B)	0.10 mg/L	95-47-6
PARA-1,4-DICHLOROBENZENE	0.08 mg/L	§290.103(3)(B)	0.10 ug/L	106-46-7

Other

Contaminant Name	Drinking Water Standard	PWS Rule	TCEQ Threshold	CAS Number
CRYPTOSPORIDIUM PARVUM				
AROCLOR (PCB)			0.05 ug/L	53469-21-9
TOTAL ALPHA EMITTING RADIUM	5.00 mg/L	§290.110		
TOTAL COLIFORM				
TOTAL TRIHALOMETHANE	0.10 mg/L	§290.116	0.10 ug/L	
TRIAZINES				
ESCHERICHIA COLI				
FECAL VIRUSES				
GIARDIA LAMBLIA				
P-ALKALINITY				

Map Legend

Water System Sources

Source Type

Source Type

 Surface Water

 Ground Water

Capture Zones

Travel Time

 2 Years

 5 Years

 10 Years

 20 Years

 50 Years

 100 Years













 Other

Truncated Watersheds



Potential Sources of Contamination

Type Description

-  ANIMAL FEEDING OPERATION
-  BUSINESS
-  CEMETERY
-  CHEMICAL PIPELINE
-  CHEMICAL STORAGE
-  CLASS I INJECTION WELL
-  CLASS II INJECTION WELL
-  CLASS III INJECTION WELL
-  CLASS IV INJECTION WELL
-  CLASS V INJECTION WELL
-  GUN RANGE
-  NATURAL RESOURCE PRODUCTION

API



▲ TRANSPORTATION

▲ WASTE

▲ WASTEWATER
